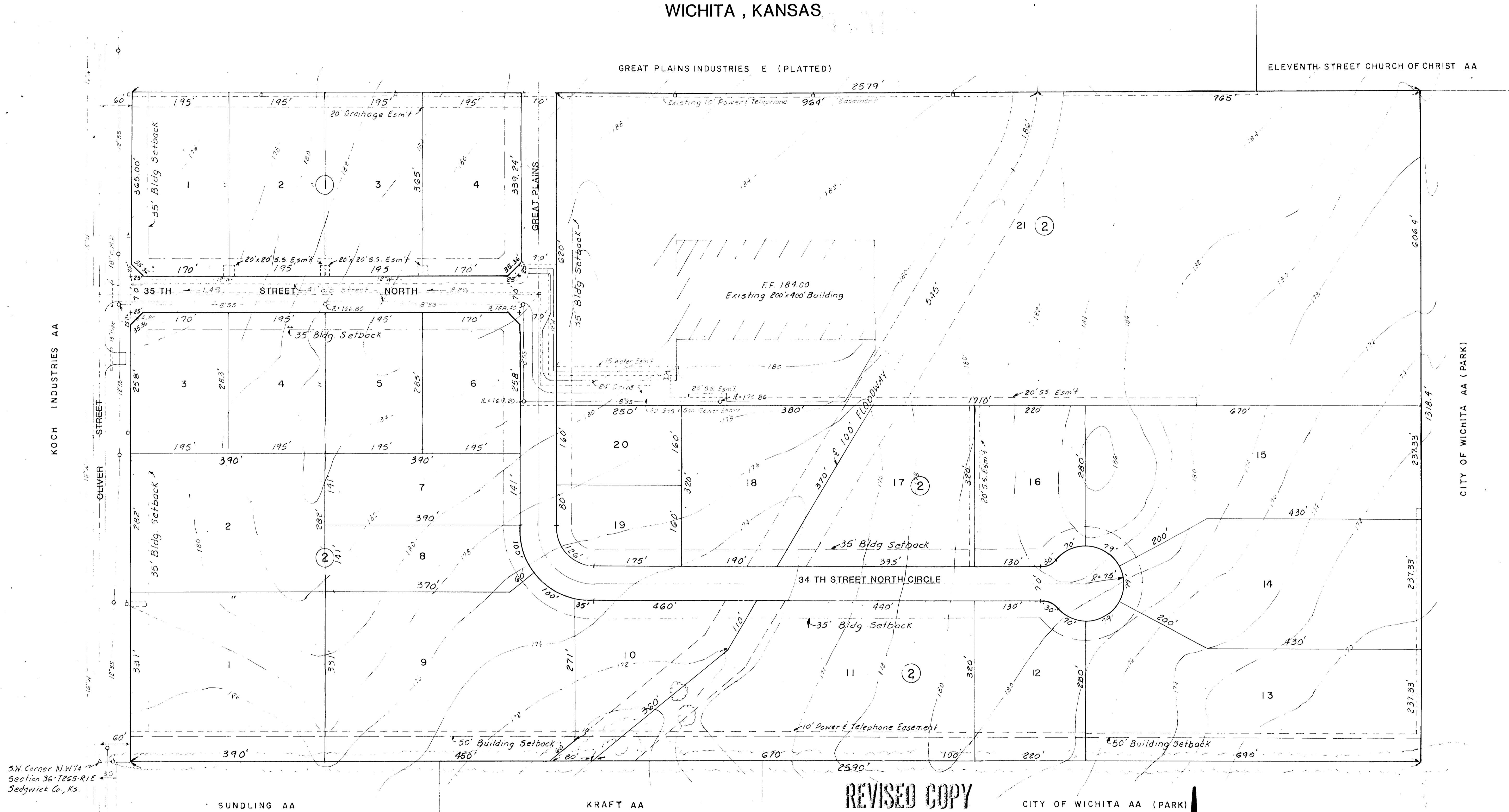


PRELIMINARY PLAT
 GREAT PLAINS BUSINESS PARK ADDITION
 WICHITA, KANSAS

GREAT PLAINS INDUSTRIES E (PLATTED)

ELEVENTH STREET CHURCH OF CHRIST AA



SW Corner N.W. 1/4
 Section 36 T26S R1E
 Sedgwick Co., Ks.

SUNDLING AA

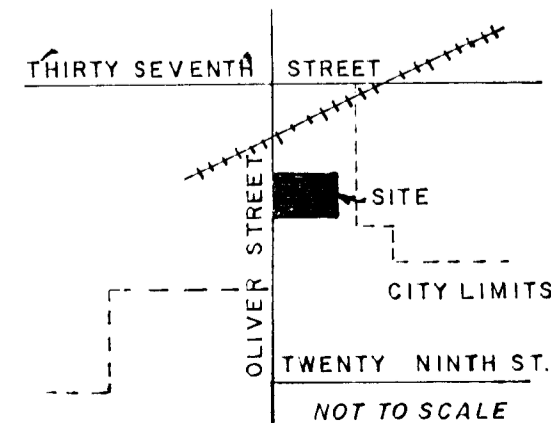
KRAFT AA

CITY OF WICHITA AA (PARK)

REVISED COPY

OWNER:
 Great Plains Industries, Inc.
 1711 Longfellow Lane
 Wichita, Ks. 67207
 686-7361

ENGINEER:
 Poe & Associates of Kansas, Inc.
 1720 E. Morris
 Wichita, Ks. 67211
 262-1497



3 M. (City Datum) 1/4" Cut S.W. Cor. of East Hdw. of R.C.B. Crossing Oliver 133' South of R.R. Elev. 177.50
 Vert. Ground Control By Flood Control 1957. Features From Approved Constr. Plans Oct. 15, 1979

