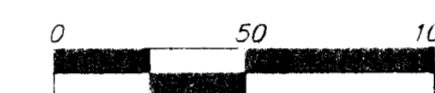
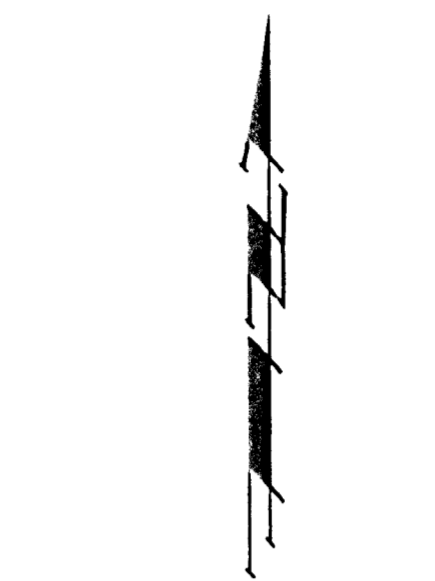


# DRAINAGE CONCEPT HAJOCA CO. ADDITION WICHITA, SEDGWICK COUNTY, KANSAS

**Owner**

Hajoca Pension Trust  
ATTN: Mr. Gary Wise  
711 N. Hydraulic  
Wichita, Kansas 67214  
(316) 262-2411

Bryn Mawr Trust Company,  
Trustee for the Employees' Retirement Plan of Hajoca Corporation  
127 Coulter Avenue  
Ardmore, PA 19003



**Legend**

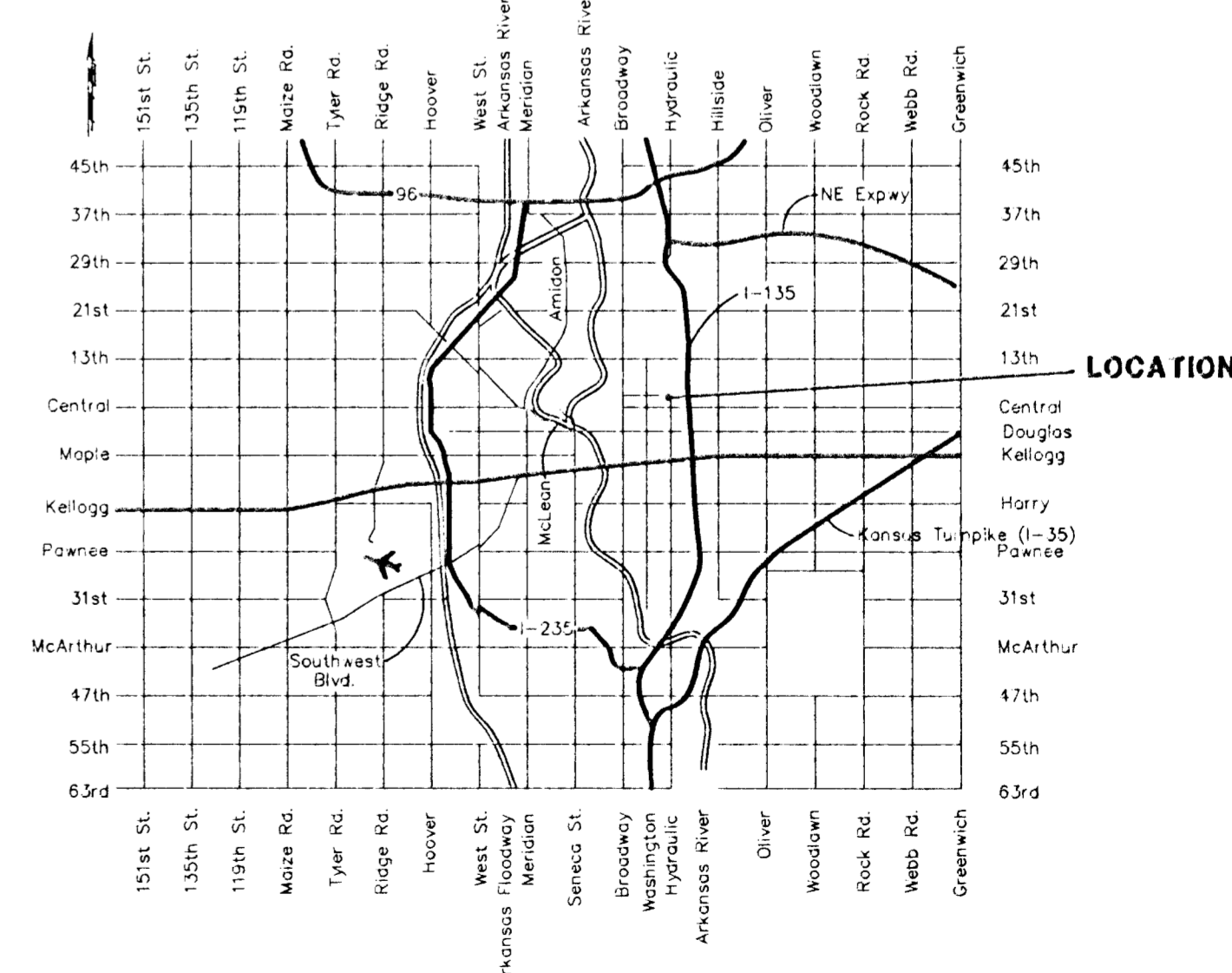
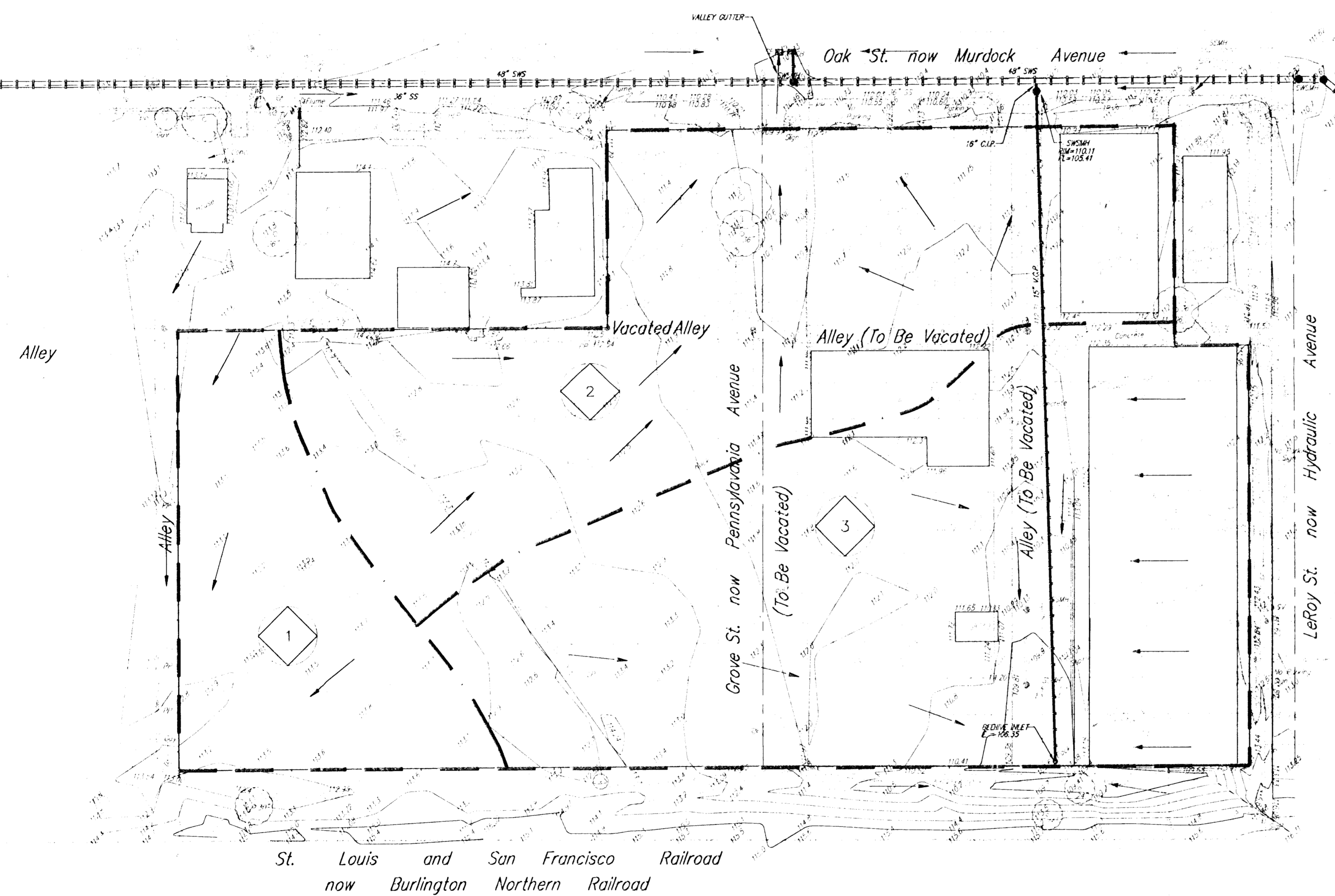
- = #4 Baughman Rebar (Set)
- = #4 Baughman Rebar (Found)
- = 1/2" Iron (Found)
- △ = 1/4" Iron (Found)
- X = Cross (Found)
- ⊙ = 3/4" Iron (Found)
- ⊖ = Thimble (Found)
- = Nail (Found)

- CB = Catch Basin
- CFH = Fire Hydrant
- CM = Gas Meter
- CA = Gas Valve
- CV = Gas Valve
- HLP = High Line Pole
- LP = Light Pole
- PP = Power Pole
- QL = Gas Line Marker
- SPH = Signal Pole
- Sign = Sign
- TS = Traffic Sign
- SSMH = Sanitary Sewer Manhole
- SWMH = Southwestern Bell Manhole
- SSWMH = Stormwater Sewer Manhole
- T = Tree
- TB = Traffic Box
- TMH = Traffic Manhole
- TP = Telephone Pole
- WM = Water Meter
- WV = Water Valve

**Benchmark**

Top of iron in Thimble  
at the intersection of  
Mathewson Ave. and Murdock  
Ave.  
Elevation = 112.80

Drainage Area	Area (acres)	C <sub>2</sub>	C <sub>100</sub>	T <sub>2</sub> (min.)	I <sub>2</sub> (in/hr)	I <sub>100</sub> (in/hr)	Q <sub>2</sub> (cfs)	Q <sub>100</sub> (cfs)
1	0.9	0.90	0.90	15	3.83	7.36	3.1	6.0
2	2.4	0.90	0.90	15	3.83	7.36	8.3	15.9
3	2.8	0.90	0.90	15	3.83	7.36	9.7	18.5



VICINITY MAP

NOTE: At this time there are no proposed changes to the drainage characteristics.

JUNE 11, 1998