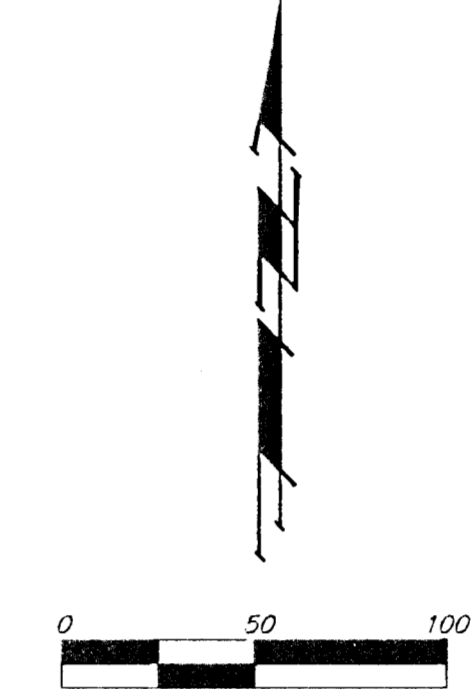


UTILITY PLAN HAJOCA CO. ADDITION WICHITA, SEDGWICK COUNTY, KANSAS

Owner

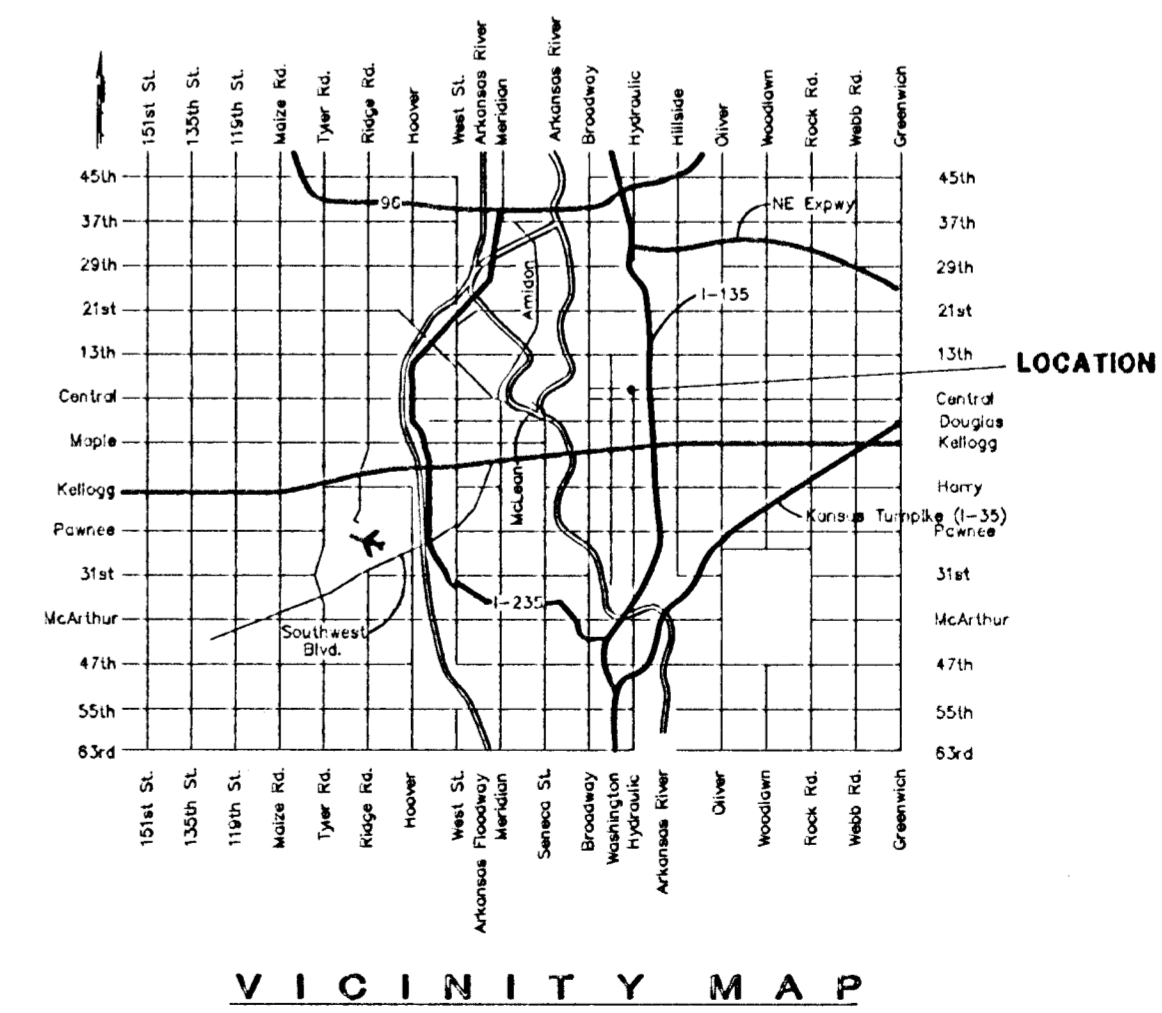
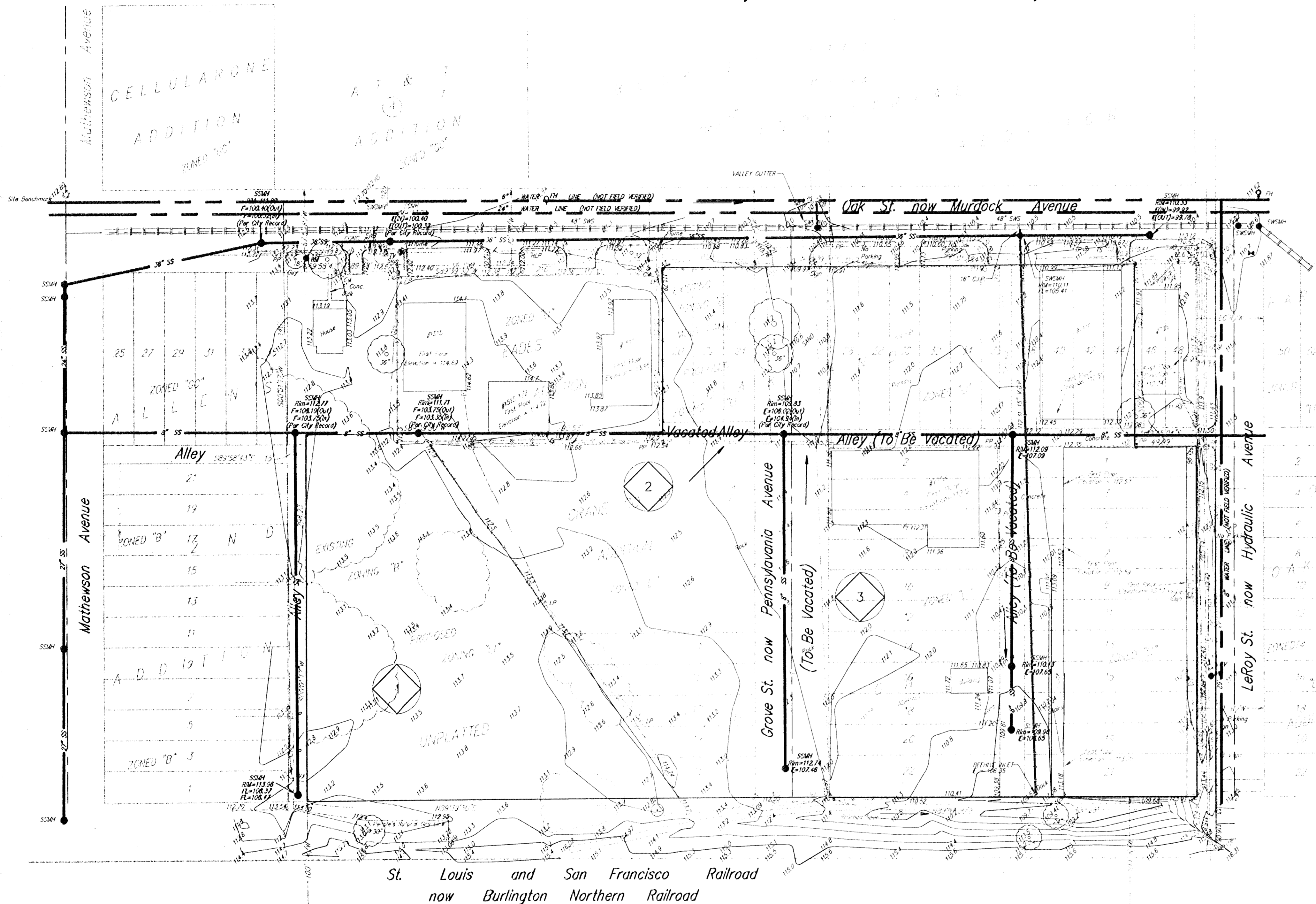
Hajoca Pension Trust
 ATTN: Mr. Cory Wise
 711 N. Hydraulic
 Wichita, Kansas 67214
 (316) 262-2471

By: Maw Trust Company,
 Trustee for the Employees' Retirement Plan of Hajoca Corporation
 127 Coulter Avenue
 Ardmore, PA 19003



Benchmark

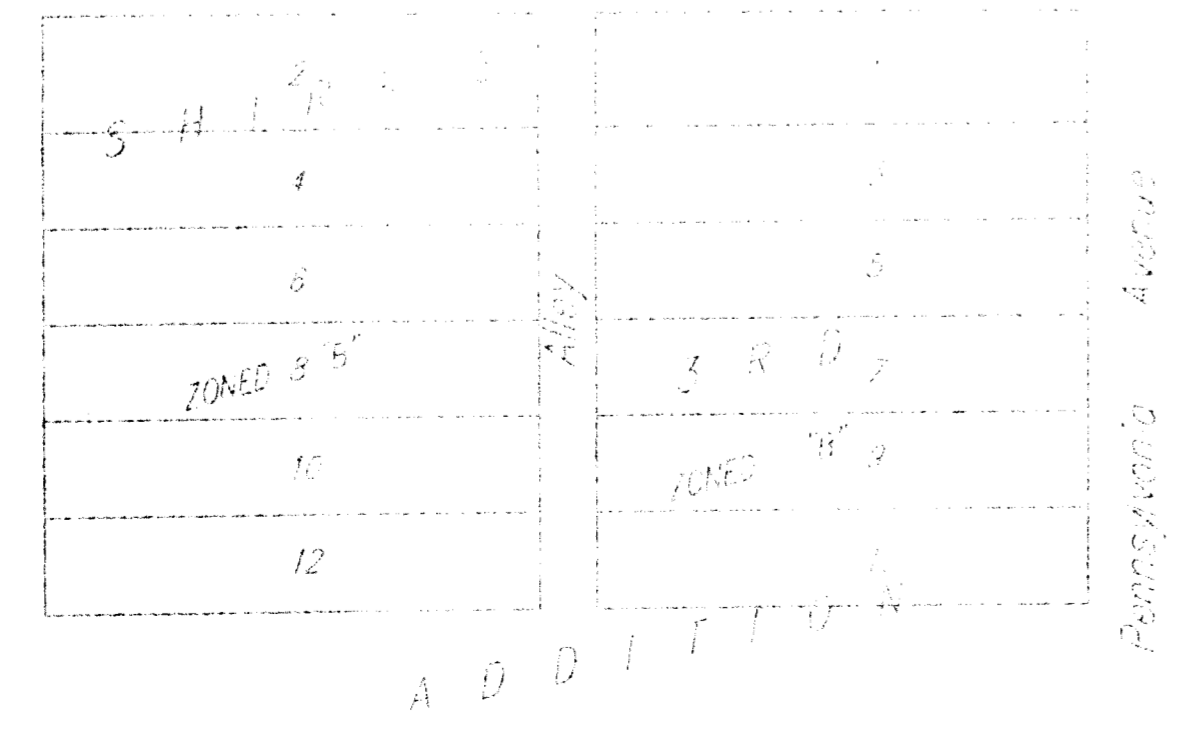
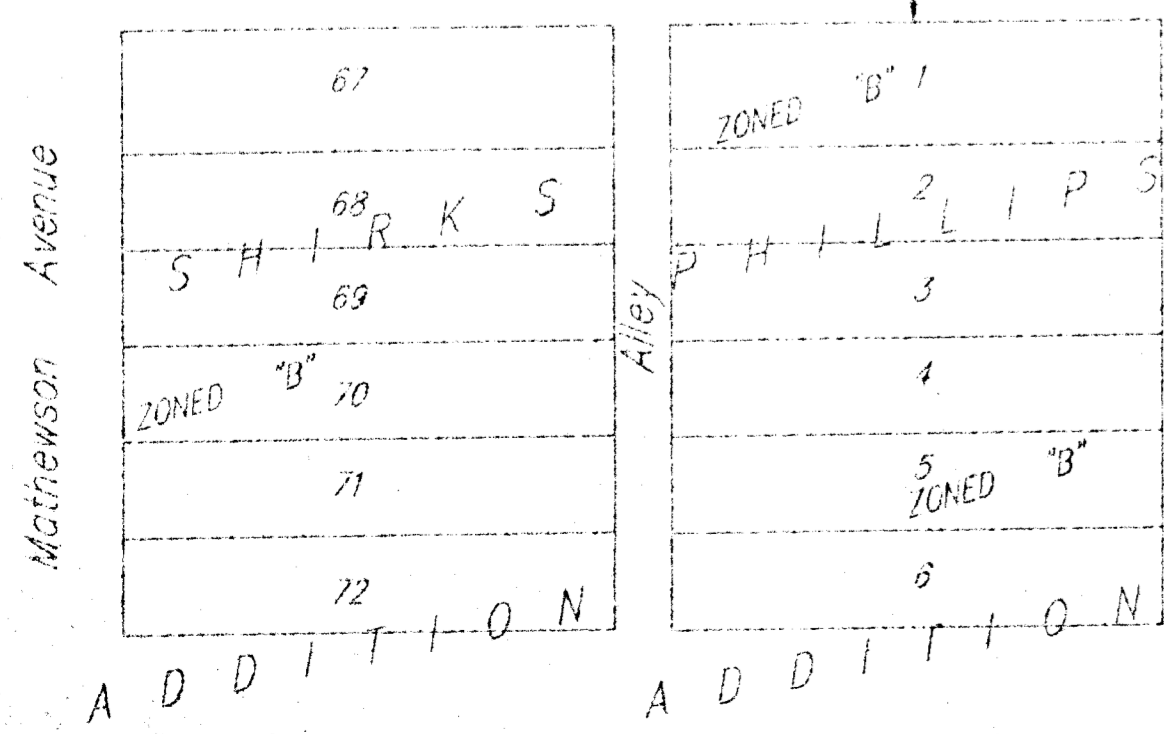
Top of Iron in Triangle
 at the intersection of
 Mathewson Ave. and Murdock Ave.
 Elevation = 112.80



NOTE: At this time there are no proposed changes to the current utilities.

AUGUST 11, 1998

BAUGHMAN COMPANY P. A.
 ENGINEERING, SURVEYING, & PLANNING
 (316)-262-7271 • 315 ELLIS • WICHITA, KANSAS 67211
 P:\WGRD\GORDAN\HAJOCA\DWG\504 -09



MURDOCK
 ZONED B
 ADDITION