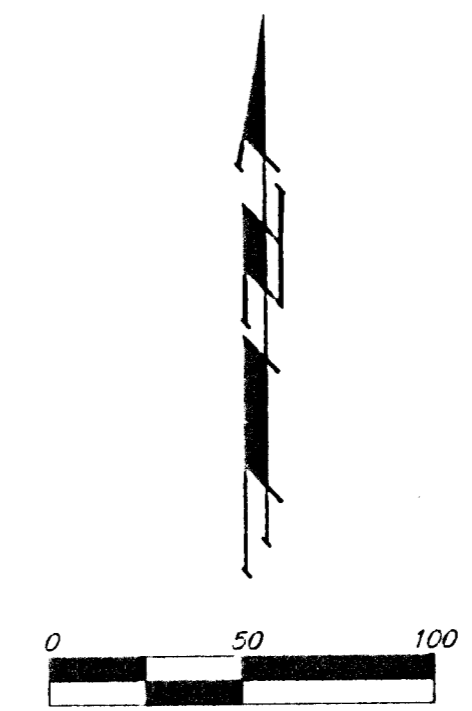
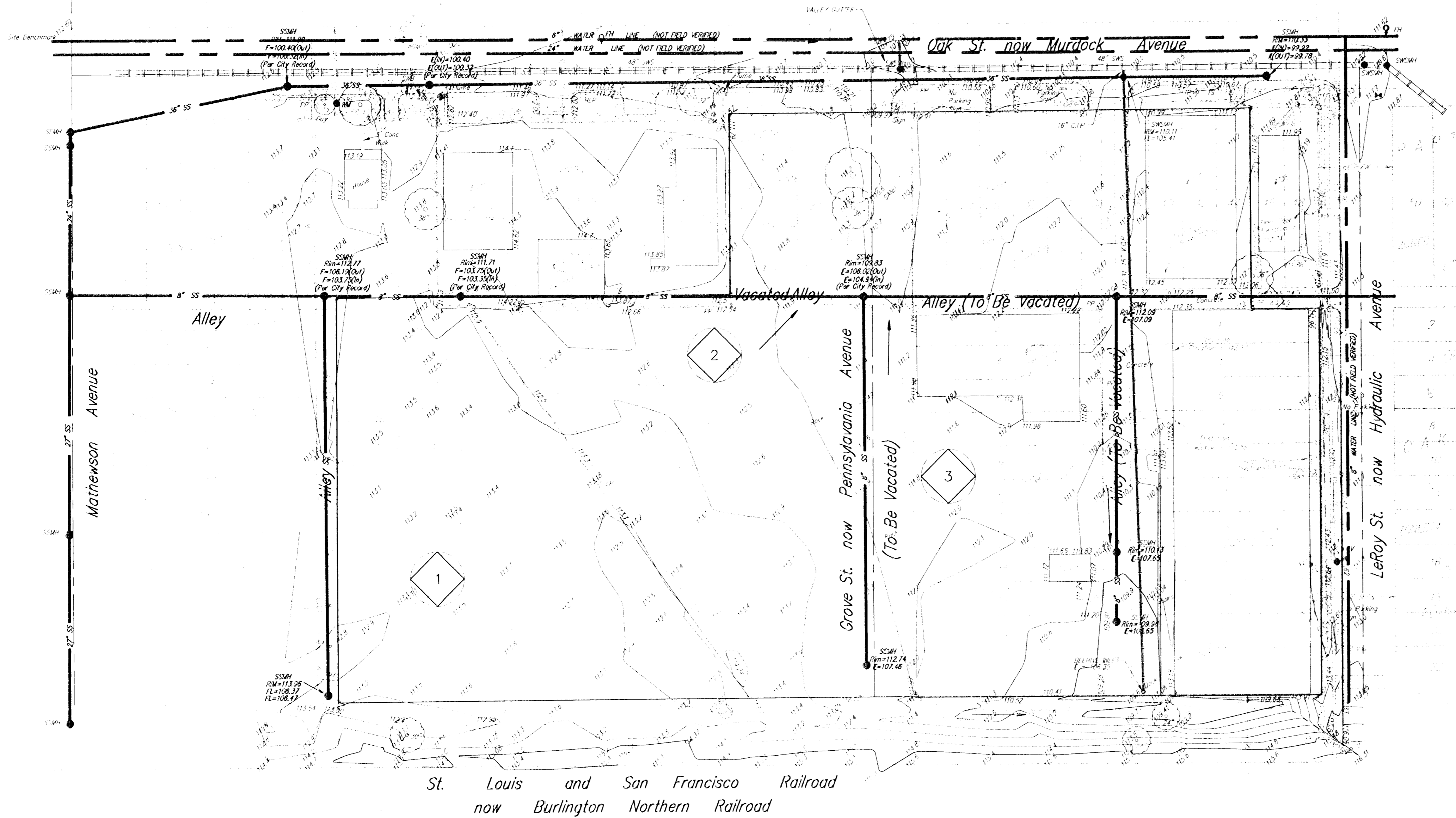


UTILITY PLAN HAJOCA CO. ADDITION WICHITA, SEDGWICK COUNTY, KANSAS

Owner

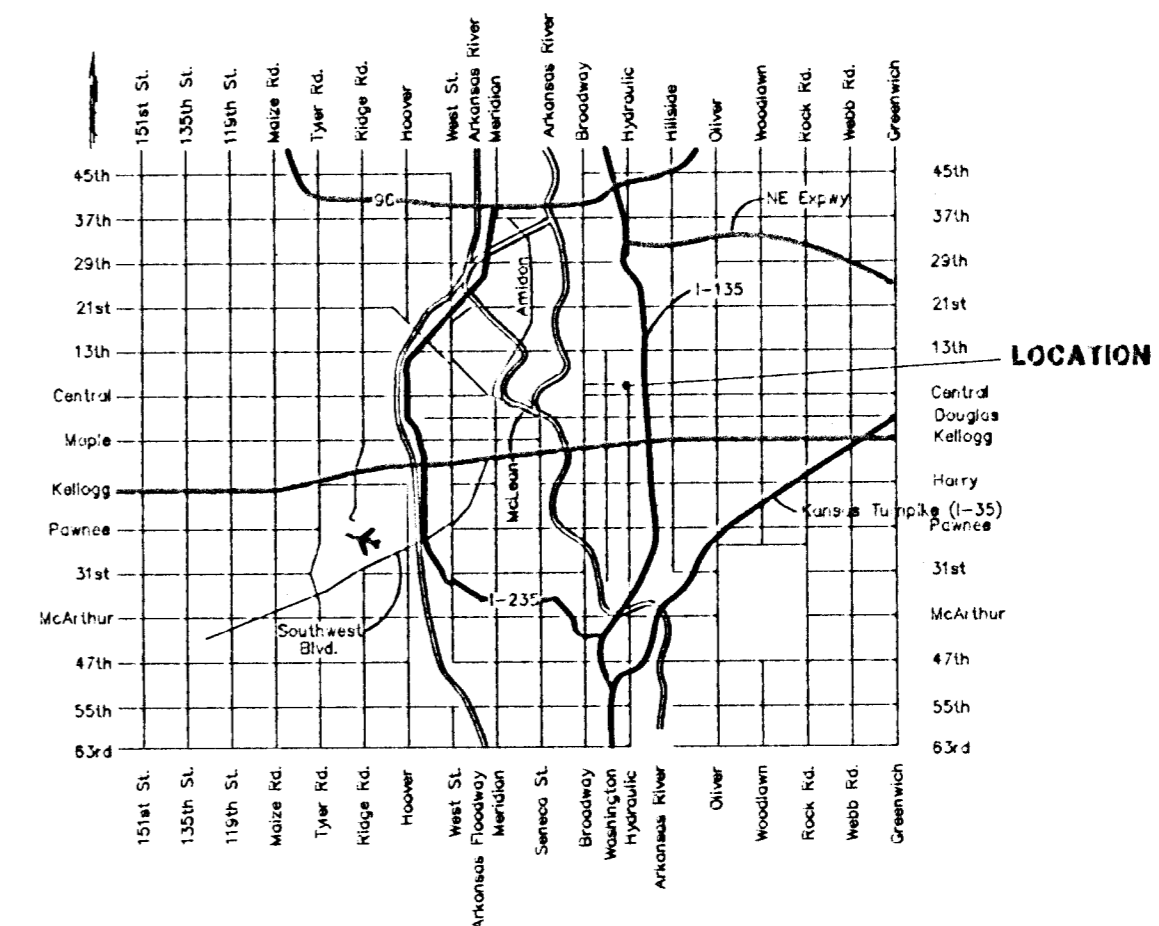
Hajoca Pension Trust
ATTN: Mr. Cary Wise
711 N. Hydraulic
Wichita, Kansas 67214
(316) 262-2471

Bryn Mawr Trust Company,
Trustee for the Employees' Retirement Plan of Hajoca Corporation
127 Coulter Avenue
Ardmore, PA 19003



Benchmark

Top of iron in thimble
at the intersection of
Mathewson Ave. and Murdock
Ave.
Elevation = 112.80



VICINITY MAP

NOTE: At this time there are no proposed changes to the current utilities.

AUGUST 11, 1998

BAUGHMAN COMPANY P. A.
ENGINEERING, SURVEYING, & PLANNING
(316) 262-7271 • 315 ELLIS • WICHITA, KANSAS 67211
F:\HYDRO\PLAN\HAJOCA\DWG\1998-08