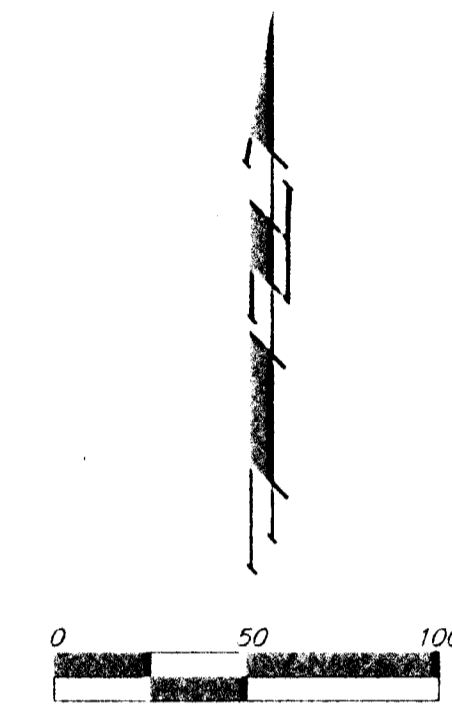
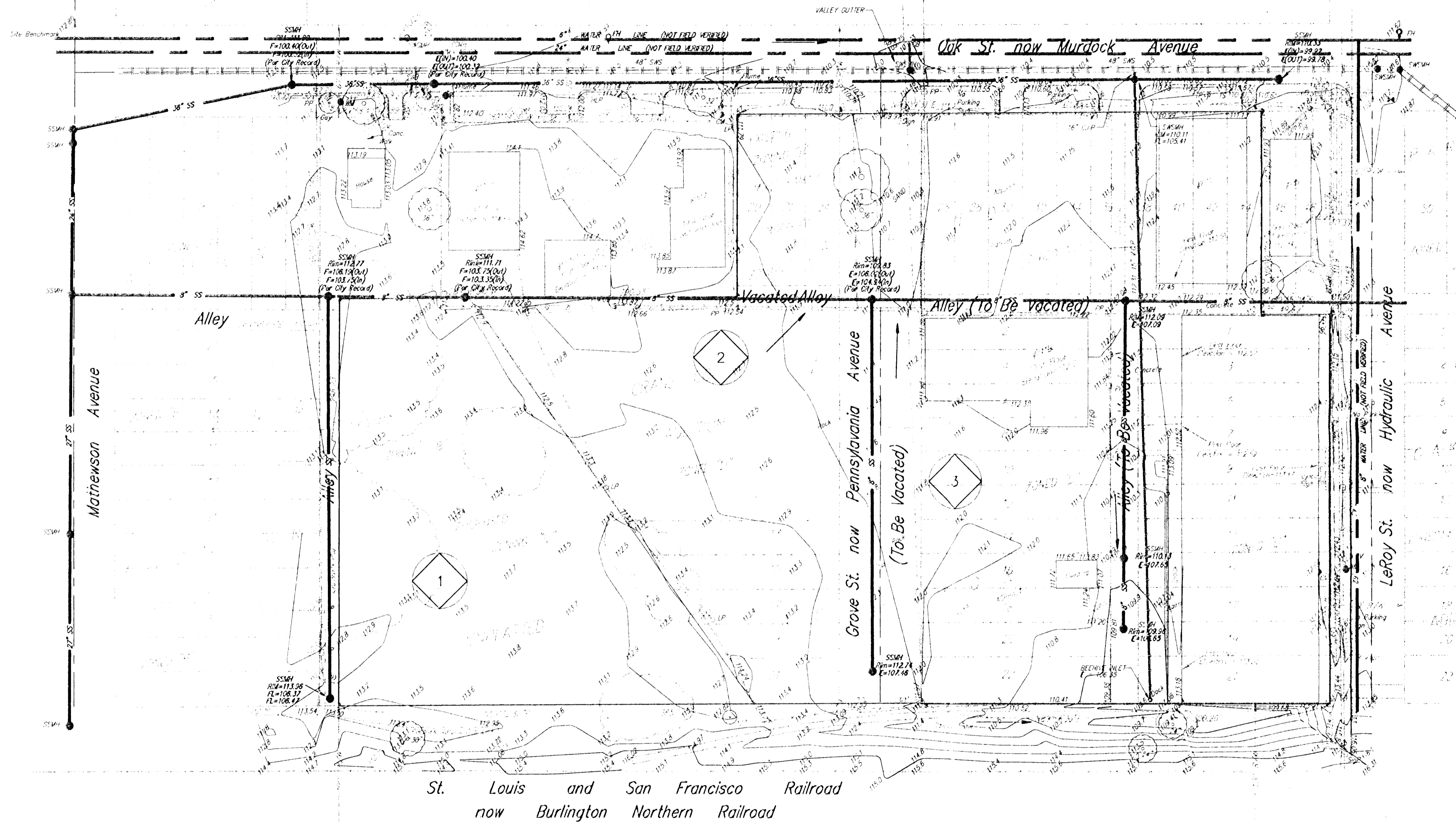


UTILITY CONCEPT HAJOCA CO. ADDITION WICHITA, SEDGWICK COUNTY, KANSAS

Owner

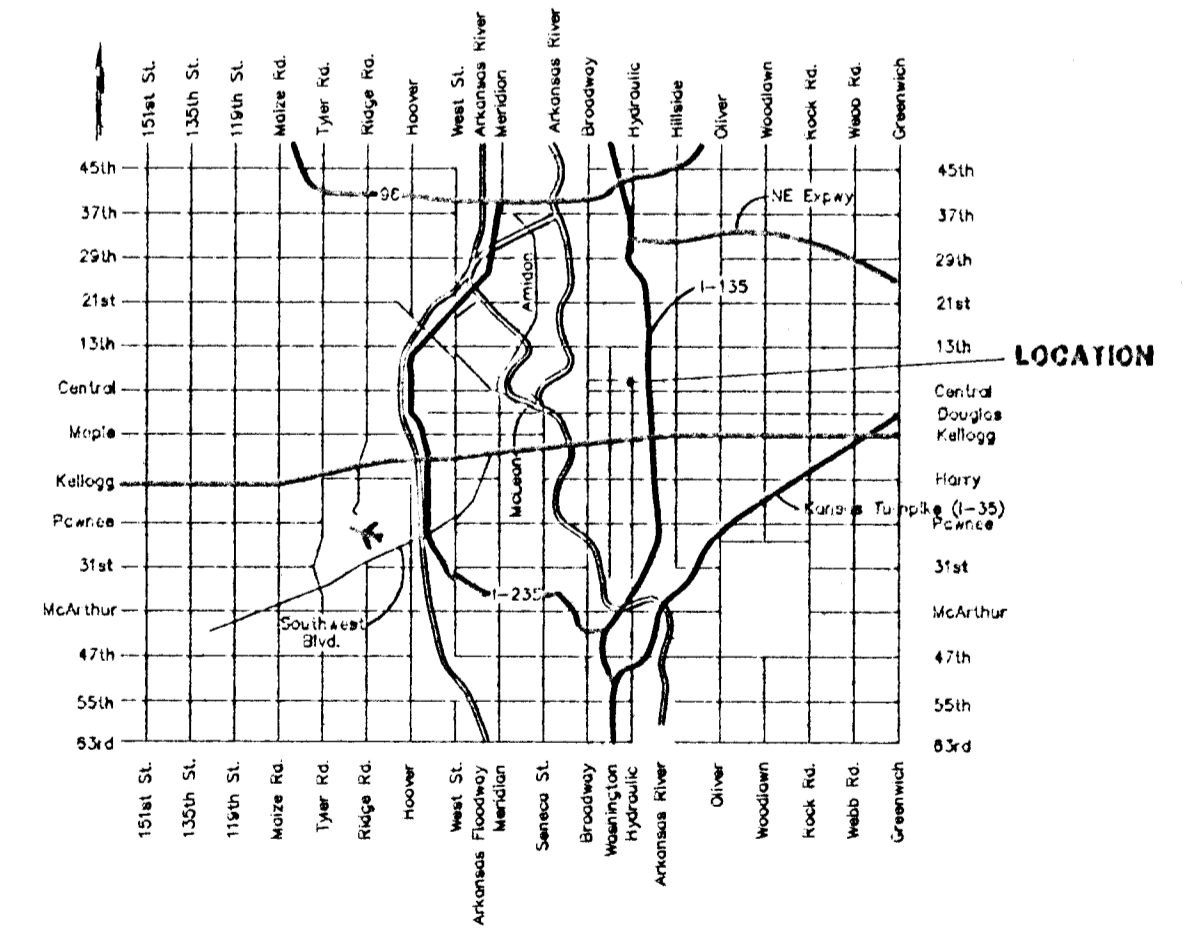
Hajoca Pension Trust
 ATTN: Mr. Cary Wise
 711 N. Hydraulic
 Wichita, Kansas 67214
 (316) 262-2471

Bryn Mawr Trust Company,
 Trustee for the Employees' Retirement Plan of Hajoca Corporation
 127 Coulter Avenue
 Ardmore, PA 19003



Benchmark

Top of iron in thimble
 at the intersection of
 Mathewson Ave. and Murdock Ave.
 Elevation = 112.80



VICINITY MAP

NOTE: At this time there are no proposed changes to the current utilities.

JUNE 24, 1998

BAUGHMAN COMPANY P.A.
 ENGINEERING, SURVEYING, & PLANNING
 (316)-262-7271 • 315 ELLIS • WICHITA, KANSAS 67211
P:\PROJECTS\HAJOCA\HAJOCA.dwg/000-000