

HAMM ADDITION

SEDGWICK COUNTY, KANSAS

State of Kansas } ss. We, Baughman Company, P.A., Surveyors
 Sedgwick County } in aforesaid county and state do hereby certify that we have
 surveyed and platted "HAMM ADDITION," Sedgwick County,
 Kansas, and that the accompanying plat is a true and correct
 exhibit of the property surveyed, described as follows: from
 the N.W. corner of the N.W. 1/4 of Sec 2, Twp 26-S, R-1-W of the
 6th P.M., Sedgwick County, Kansas, S 83° 51' 10" E, along the
 north line of said N.W. 1/4, a distance of 767.78 feet, thence
 S 0° 11' 50" W, parallel with the east line of said N.W. 1/4 a distance
 of 310.33 feet to a point of beginning, thence S 0° 11' 50" W, a
 distance of 285.12 feet, thence S 83° 42' 30" E, being parallel with
 the south line of said N.W. 1/4, a distance of 381.40 feet, thence
 N 0° 11' 50" E, a distance of 285.94 feet, thence N 83° 43' 52" W,
 a distance of 381.40 feet to the point of beginning.

Baughman Company, P.A.

Date _____
Gregory F. Severns Surveyor

Know all men by these presents that we,
 the undersigned, have caused the land described in the surveyors
 certificate to be platted into a lot to be known as "HAMM
 ADDITION," Sedgwick County, Kansas.

Ronald Lee Hamm Mary A. Hamm

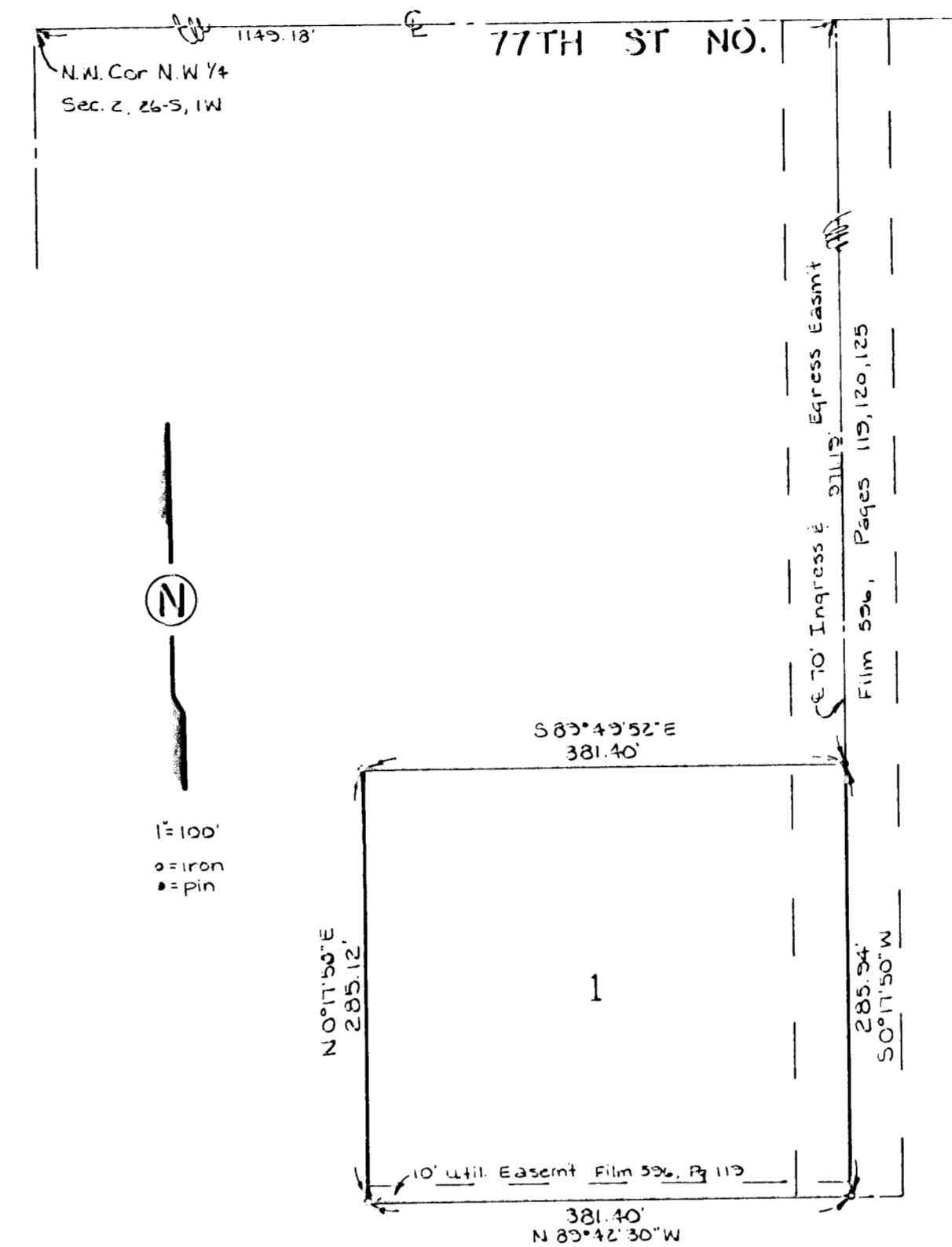
State of Kansas } ss. The foregoing instrument was acknowl-
 Sedgwick County } edged before me this ____ day of _____, 198__, by
 Ronald Lee Hamm and Mary A. Hamm, his wife.

My Appt Exp _____
 _____ Notary Public

State of Kansas } ss. This is to certify that this plat has been
 Sedgwick County } filed for record on this ____ day of _____, 198__, at ____
 o'clock __M., and is duly recorded.

Pat Kettler Register of Deeds
Ed Resa Deputy

Entered on transfer record this _____
 day of _____, 198__.
Don Wright County Clerk



This plat of "HAMM ADDITION," Sedgwick County, Kansas, has been submitted to and approved by the Wichita-Sedgwick County Metropolitan Area Planning Commission, Wichita, Kansas.
 Dated this ____ day of _____, 198__.
 Wichita-Sedgwick County Metropolitan Area Planning Commission

Sue L. Crockett Chairman
Marvin S. Erout Secretary

This plat approved and all dedications shown hereon accepted by the Board of County Commissioners, Sedgwick County, Kansas, this ____ day of _____, 198__.

Paul W. Hancock Chairman
Bernard A. Hentzen Chairman Pro-Tem
David Bayouth Commissioner
Billy Q. McCray Commissioner
Mark F. Schroeder Commissioner
Don Wright County Clerk