

HAMM ADDITION

SEDGWICK COUNTY, KANSAS

State of Kansas } ss
 Sedgwick County } We, Baughman Company, P.A., Surveyors
 in aforesaid county and state do hereby certify that we have
 surveyed and platted "HAMM ADDITION," Sedgwick County,
 Kansas, and that the accompanying plat is a true and correct
 exhibit of the property surveyed, described as follows: From
 the N.W. corner of the N.W. 1/4 of Sec. 2, Twp 26-S, R-1-W of the
 6th P.M., Sedgwick County, Kansas, S 83°51'10"E, along the
 north line of said N.W. 1/4, a distance of 767.78 feet, thence
 S 0°17'50"W, parallel with the east line of said N.W. 1/4 a distance
 of 270.33 feet to a point of beginning, thence S 0°17'50"W, a
 distance of 285.12 feet, thence S 83°42'30"E, being parallel with
 the south line of said N.W. 1/4, a distance of 381.40 feet, thence
 N 0°17'50"E, a distance of 285.34 feet, thence N 83°43'52"W,
 a distance of 381.40 feet to the point of beginning.

9-5-89
 Date

Baughman Company, P.A.

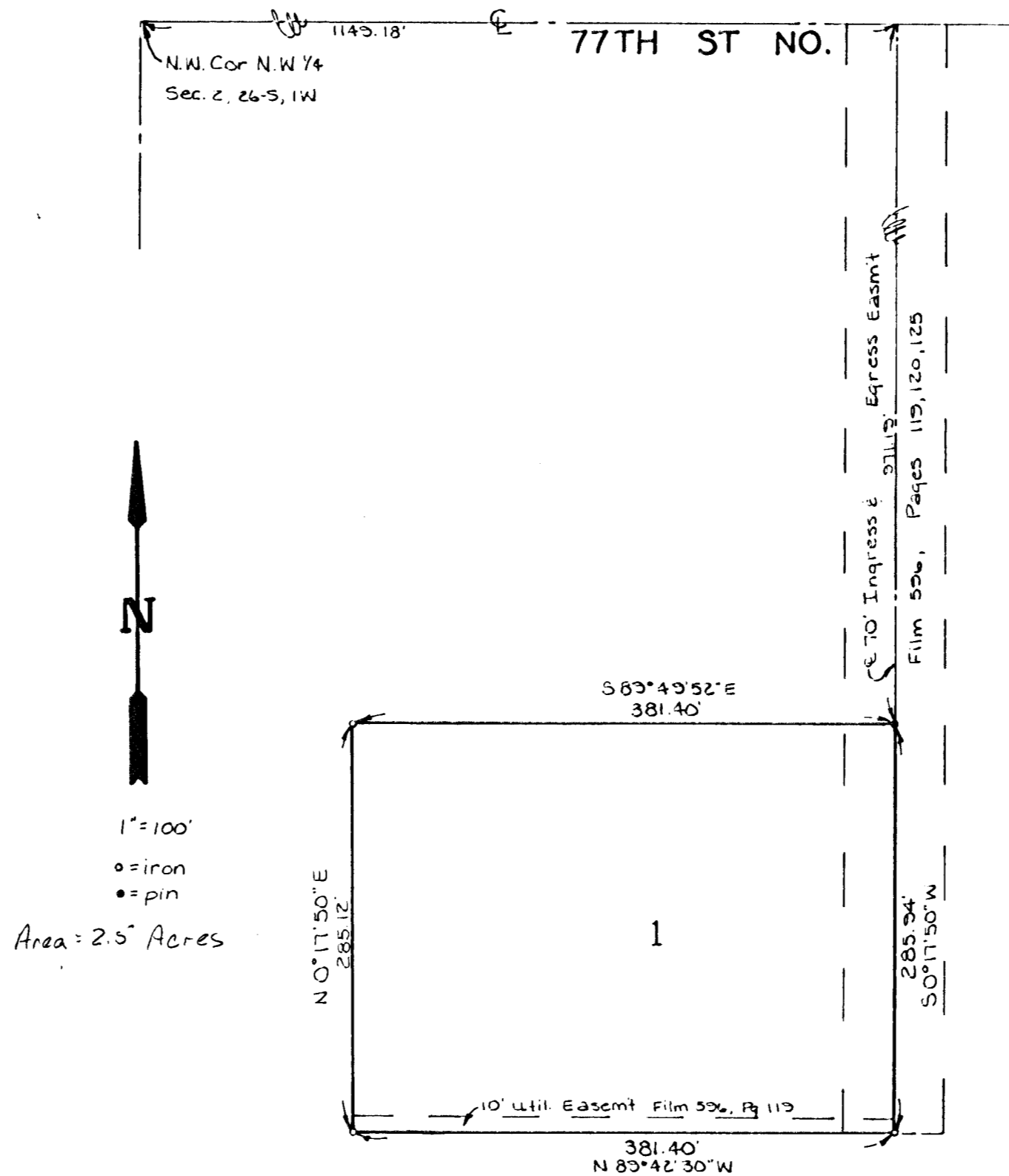


Gregory F. Severns Surveyor
 Gregory F. Severns

Know all men by these presents that we,
 the undersigned, have caused the land described in the surveyors
 certificate to be platted into a lot to be known as "HAMM
 ADDITION," Sedgwick County, Kansas.

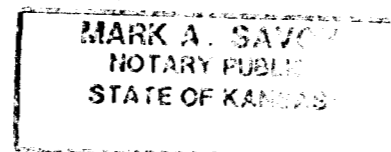
Ronald Lee Hamm
 Ronald Lee Hamm

Mary A. Hamm
 Mary A. Hamm



State of Kansas } ss
 Sedgwick County } The foregoing instrument was acknowl-
 edged before me this 5th day of September, 1989, by
 Ronald Lee Hamm and Mary A. Hamm, his wife.

My Appt Exp. 16 May 1992
Mark A. Savoy Notary Public
 Mark A. Savoy



This plat of "HAMM ADDITION," Sedgwick County, Kansas, has been submitted to and approved by the Wichita-Sedgwick County Metropolitan Area Planning Commission, Wichita, Kansas.
 Dated this 5th day of September, 1989.
 Wichita-Sedgwick County Metropolitan Area Planning Commission

 Chairman
 Marvin S. Erout
 Secretary

State of Kansas } ss
 Sedgwick County } This is to certify that this plat has been
 filed for record in the office of the Register of Deeds on this
 5th day of September, 1989, at _____ o'clock _____ M.; and is duly
 recorded.

 Register of Deeds
 Pat Kettler
 Deputy
 Ed Resa

Entered on transfer record, this 5th day of September, 1989.

 County Clerk
 Don Wright

This plat approved and all dedications shown hereon accepted by the Board of County Commissioners, Sedgwick County, Kansas, this 5th day of September, 1989.

 Chairman
 Paul W. Hancock
 Chairman Pro-Tem
 Bernard A. Hentzen
 Commissioner
 David Bayouth
 Commissioner
 Billy Q. McCray
 Commissioner
 Mark F. Schroeder
 County Clerk
 Don Wright