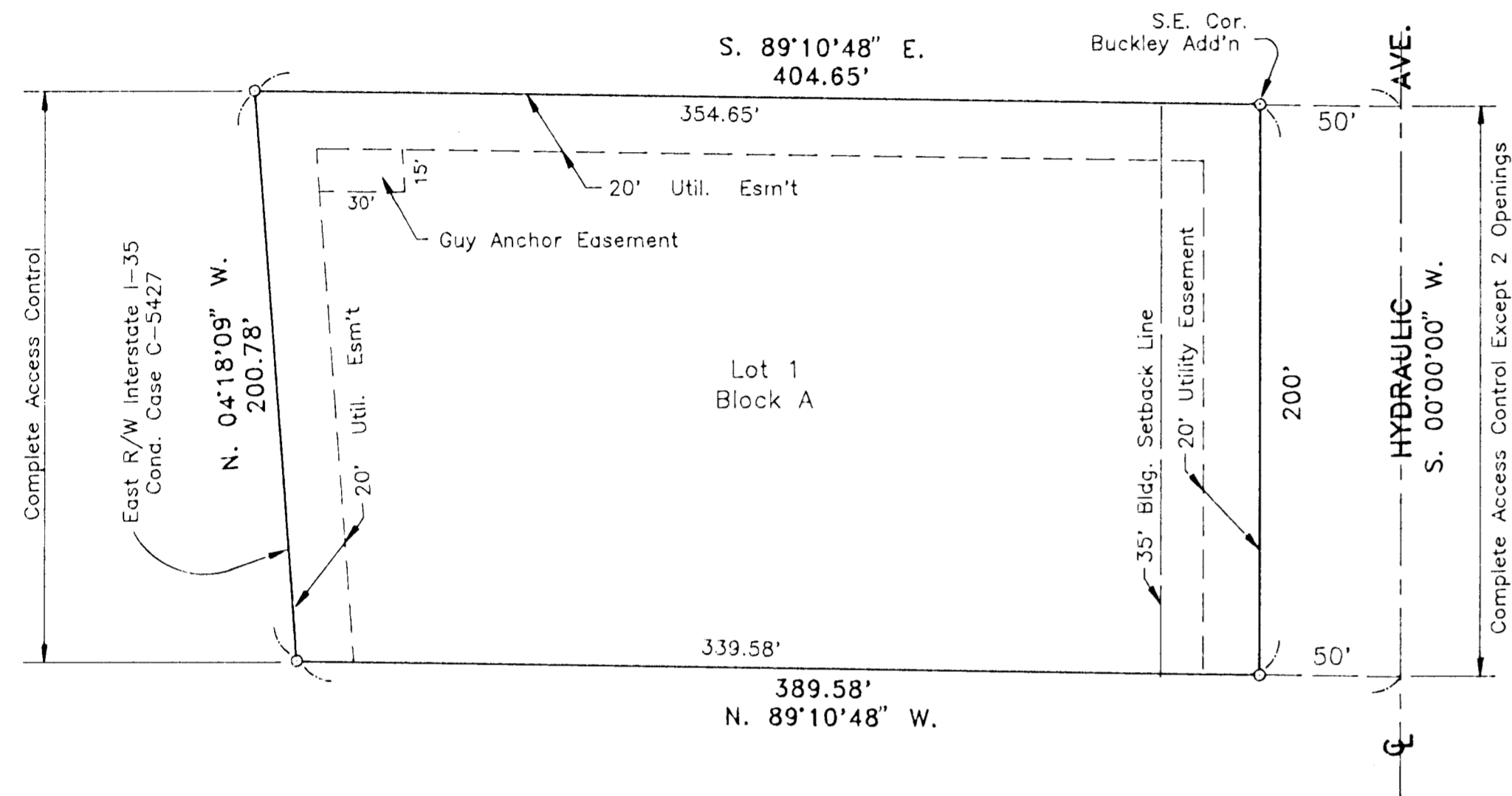
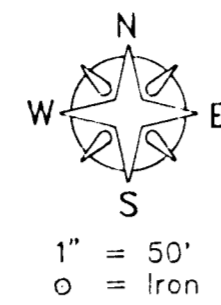


HAMPEL ADDITION

TO WICHITA, SEDGWICK COUNTY, KANSAS



STATE OF KANSAS, COUNTY OF SEDGWICK, SS:

I, DON C. MOEHRING II, A REGISTERED LAND SURVEYOR IN SAID STATE AND COUNTY, DO HEREBY CERTIFY THAT I HAVE SURVEYED AND PLATTED "HAMPEL ADDITION" TO WICHITA, SEDGWICK COUNTY, KANSAS, INTO A LOT, A BLOCK AND A STREET, THE SAME BEING ACCURATELY SET FORTH ON THE ACCOMPANYING PLAT, AND DESCRIBED AS BEING THE NORTH 200 FEET OF THE NORTH 470 FEET OF THAT PART OF THE SOUTHEAST QUARTER OF THE NORTHEAST QUARTER OF SECTION 33, TOWNSHIP 26 SOUTH, RANGE 1 EAST OF THE SIXTH PRINCIPAL MERIDIAN, SEDGWICK COUNTY, KANSAS; LYING EAST OF THE EAST RIGHT-OF-WAY OF THE INTERSTATE HIGHWAY 35W.

DON C. MOEHRING II SURVEYOR

KNOW ALL MEN BY THESE PRESENTS THAT WE THE UNDERSIGNED, PROPERTY OWNERS OF THE LAND AS ABOVE SET FORTH IN THE SURVEYOR'S CERTIFICATE, HAVE CAUSED THE SAME TO BE SURVEYED AND PLATTED INTO A LOT, A BLOCK AND A STREET, TO BE KNOWN AS "HAMPEL ADDITION" TO WICHITA, SEDGWICK COUNTY, KANSAS. THE STREETS ARE HEREBY DEDICATED TO AND FOR THE USE OF THE PUBLIC. EASEMENTS FOR THE CONSTRUCTION AND MAINTENANCE OF PUBLIC UTILITIES, AS INDICATED ON THE ACCOMPANYING PLAT, ARE HEREBY GRANTED. ALL ABUTTER'S RIGHTS OF ACCESS OVER AND ACROSS THE EAST LINE IF I-35W RIGHT-OF-WAY, AND THE WEST LINE OF HYDRAULIC AVENUE ARE HEREBY GRANTED TO THE CITY OF WICHITA, PROVIDED HOWEVER THAT LOT 1, BLOCK "A", SHALL HAVE ACCESS TO HYDRAULIC AVENUE AT 2 LOCATIONS, TO BE DETERMINED BY THE CITY ENGINEER OF THE CITY OF WICHITA.

HAMPEL OIL DISTRIBUTOR'S, INC.

WILLIAM J. HAMPEL, PRESIDENT

STATE OF KANSAS, COUNTY OF SEDGWICK, SS:

BE IT REMEMBERED THAT THIS _____ DAY OF _____, 1995, BEFORE ME, A NOTARY PUBLIC IN AND FOR SAID STATE AND COUNTY, CAME HAMPEL OIL DISTRIBUTOR'S, INC. BY WILLIAM J. HAMPEL, PRESIDENT, ON BEHALF OF THE CORPORATION, TO ME PERSONALLY KNOWN TO BE THE SAME PERSON WHO EXECUTED THE FOREGOING INSTRUMENT OF WRITING AND DULY ACKNOWLEDGED THE EXECUTION OF THE SAME ON BEHALF OF AND AS THE ACT AND DEED OF SAID CORPORATION. IN TESTIMONY WHEREOF I HAVE HEREUNTO SET MY HAND AND AFFIXED MY NOTARIAL SEAL THE DAY AND YEAR ABOVE WRITTEN.

_____, NOTARY PUBLIC MY COMMISSION EXPIRES _____
VIRGINIA L. MERRIMAN

THIS PLAT OF "HAMPEL ADDITION" TO WICHITA, SEDGWICK COUNTY, KANSAS, HAS BEEN SUBMITTED TO AND APPROVED BY THE WICHITA-SEDGWICK COUNTY METROPOLITAN PLANNING COMMISSION.

DATED THIS _____ DAY OF _____, 1995.

WICHITA-SEDGWICK COUNTY METROPOLITAN AREA PLANNING COMMISSION

_____, CHAIRMAN
JOHN W. MCKAY, JR.

_____, SECRETARY
MARVIN S. KROUT

THIS PLAT HAS BEEN APPROVED AND ALL DEDICATIONS SHOWN HEREON, IF ANY, ACCEPTED BY THE CITY COUNCIL OF THE CITY OF WICHITA, KANSAS, THIS _____ DAY OF _____, 1995.

_____, MAYOR
BOB KNIGHT

_____, DEPUTY CITY CLERK
PAT BURNETT

STATE OF KANSAS, COUNTY OF SEDGWICK, SS:

THIS IS TO CERTIFY THAT THIS INSTRUMENT WAS FILED FOR RECORD IN THE REGISTER OF DEEDS OFFICE AT _____ ON THE _____ DAY OF _____, 1995.

_____, REGISTER OF DEEDS
PAT KETTLER

_____, DEPUTY
ED RESA

ENTERED ON TRANSFER RECORD THIS _____ DAY OF _____, 1995.

_____, COUNTY CLERK
SUSAN E. CROCKETT-SPOON