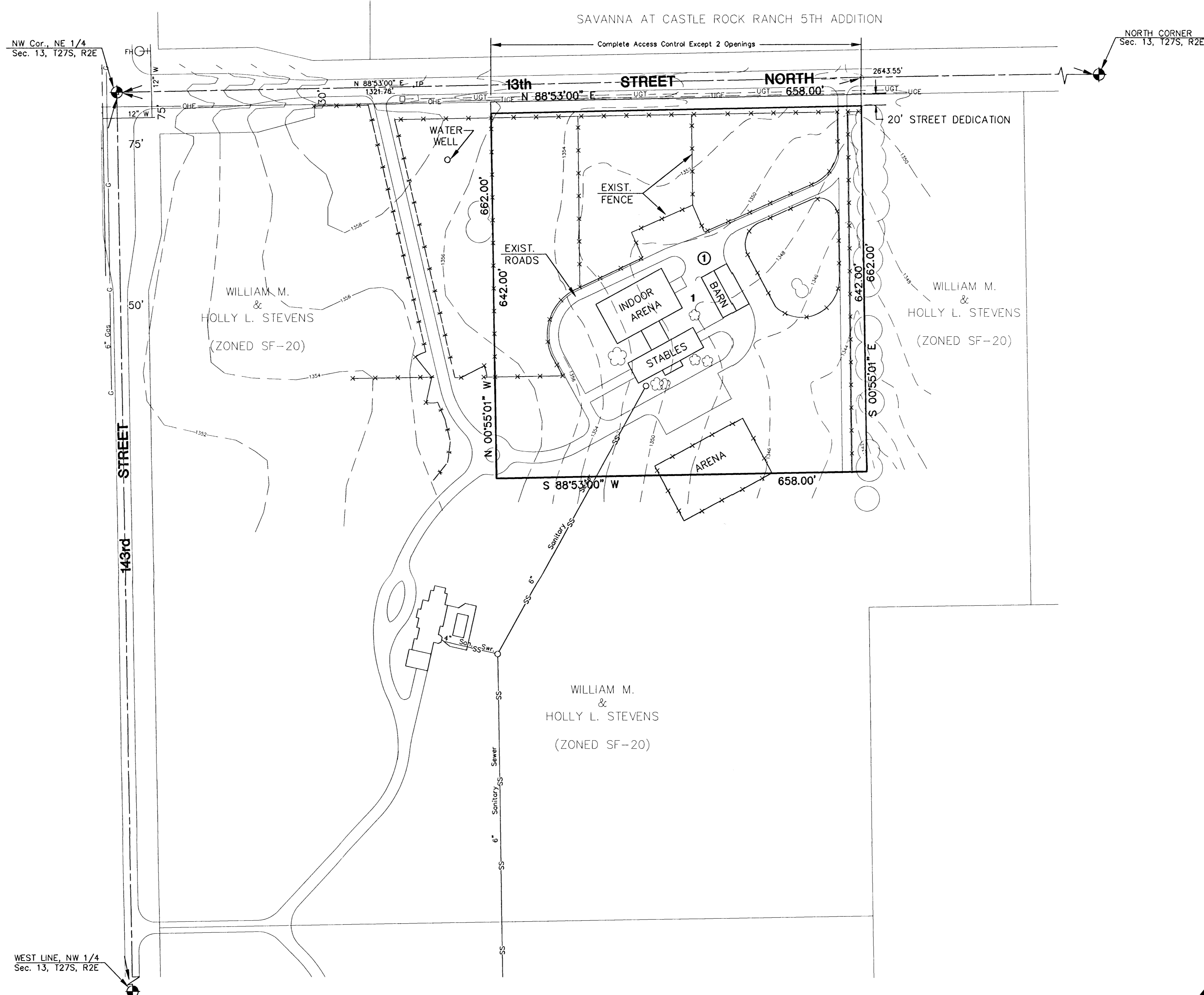
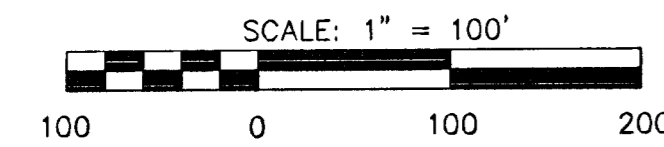


VICINITY MAP

BENCHMARK

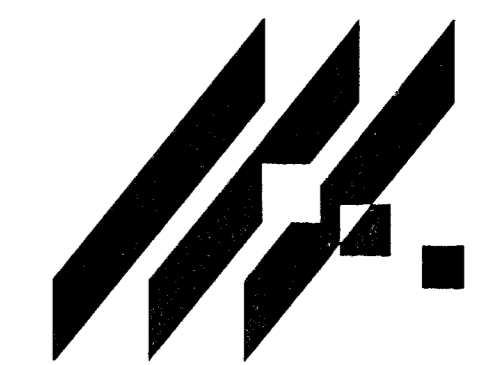
BM BRASS DISC IN E END OF N HUBGUARD OF BRIDGE 1352.2' E & 22.4' N OF SW COR. OF SW 1/4, SEC 11, T27S, R2E. ELEV.=1340.83



PRELIMINARY PLAT HWS STABLES AT HOLLENBECK FARMS

SECTION 13, TOWNSHIP 27 SOUTH, RANGE 2 EAST OF THE 6TH P.M., SEDGWICK COUNTY, KANSAS
 OWNER - HWS STABLES AT HOLLENBECK FARMS, INC.
 1050 N. 143rd STREET EAST WICHITA, KS. 67230

OCTOBER 1998
 DEVELOPER - HWS STABLES AT HOLLENBECK FARMS, INC.
 SURVEYOR - MID-KANSAS ENGINEERING CONSULTANTS, INC.



MID-KANSAS ENGINEERING
 CONSULTANTS, INC.
 411 N WEBB ROAD
 WICHITA, KS. 67206
 316-684-9600