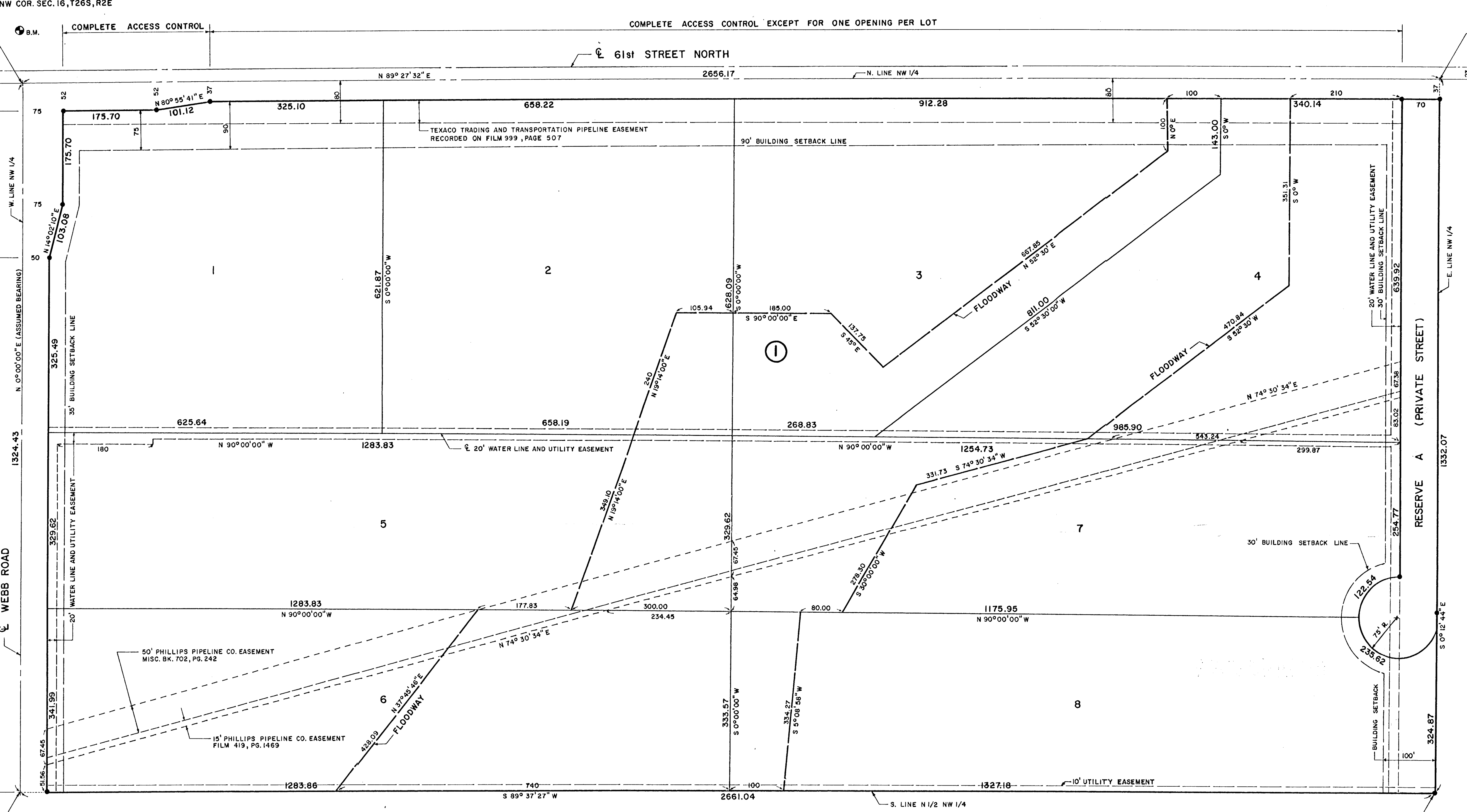


NW COR. SEC. 16, T26S, R2E
B.M.

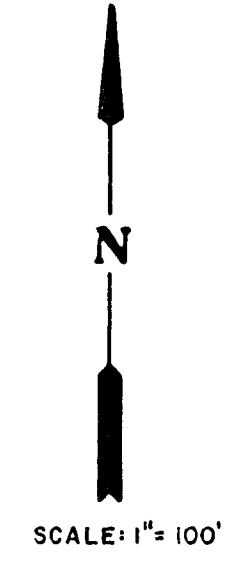
NE COR. NW 1/4
SEC. 16, T26S, R2E

COMPLETE ACCESS CONTROL
COMPLETE ACCESS CONTROL EXCEPT FOR ONE OPENING PER LOT
COMPLETE ACCESS CONTROL EXCEPT FOR ONE OPENING PER LOT



SW COR. N 1/2, NW 1/4
SEC. 16, T26S, R2E

SE COR. N 1/2, NW 1/4
SEC. 16, T26S, R2E



SCALE: 1" = 100'

PRAIRIE LAKES ADDITION SEDGWICK COUNTY, KANSAS

REISS & GOODNESS ENGINEERS
2100 WEST 21ST STREET
WICHITA, KANSAS 67204
(316) 832-0213

1989

LEGEND
● = 3/4" IRON OR
5/8" REBAR
B.M. = BENCHMARK

BENCHMARK: CHISLED SQUARE ON
WEST HUBGUARD OF R.C.B.C., 100'
NORTH OF NORTHWEST CORNER
OF SECTION 16,
ELEV. 1388.10 MEAN SEA LEVEL DATUM

MINIMUM BUILDING PAD ELEVATIONS	
LOT	ELEVATION (MEAN SEA LEVEL DATUM)
2	1375
3	1375
4	1374
5	1377
6	1378
7	1375
8	1376