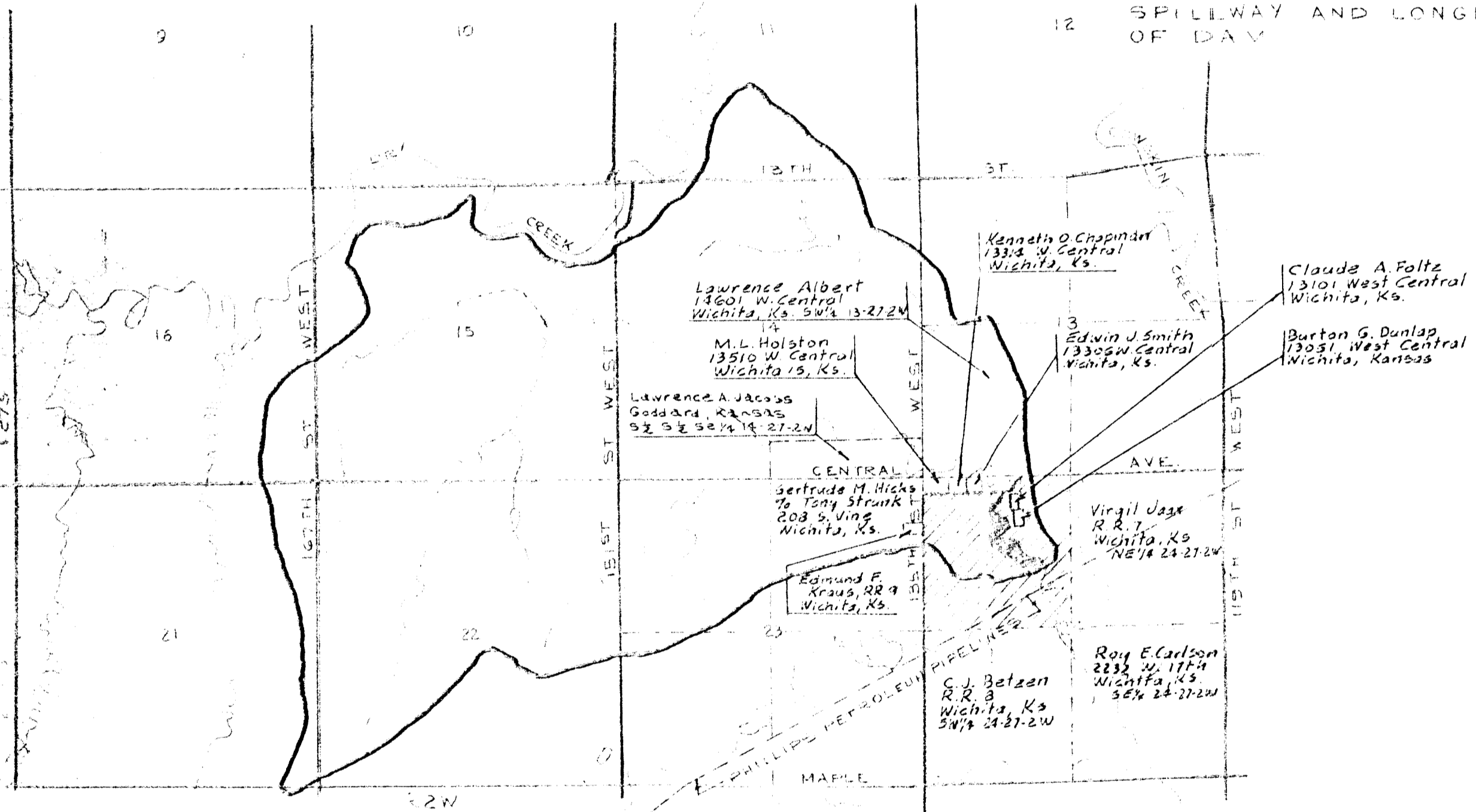
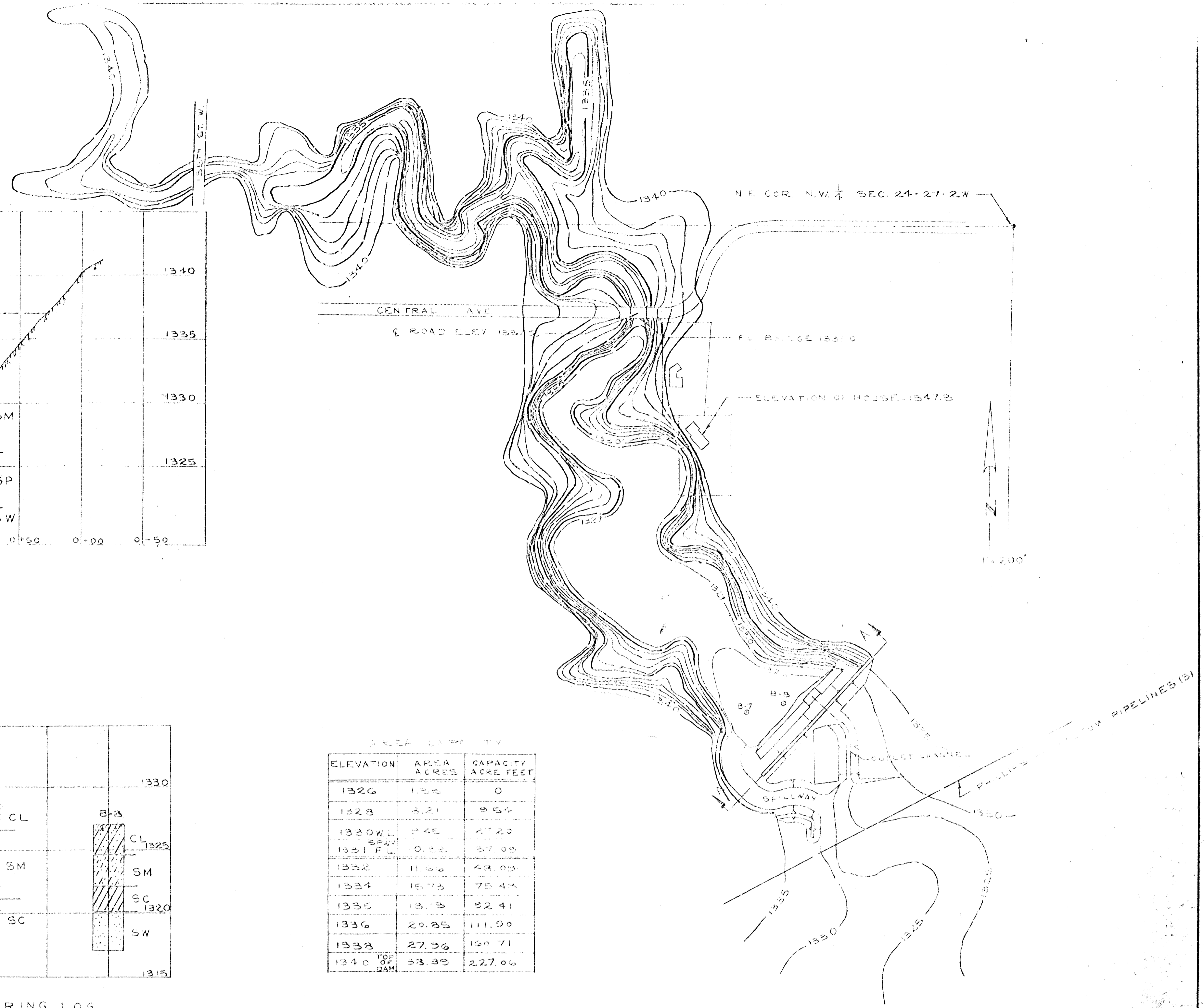
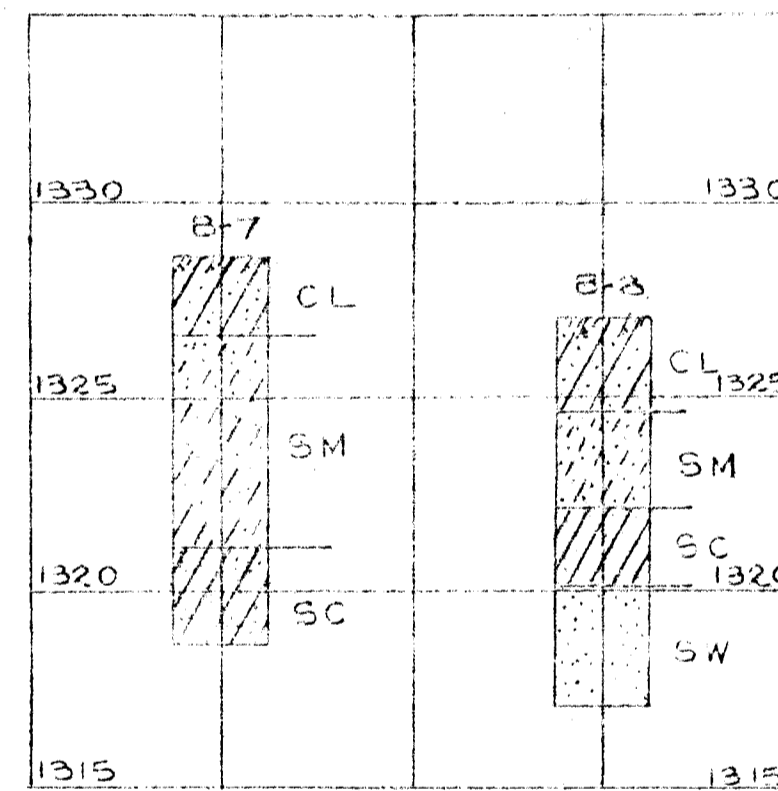


SECTION A-A
SHOWING CROSS SECTION OF DAM SITE AND
SPILLWAY AND LONGITUDINAL SECTION
OF DAM



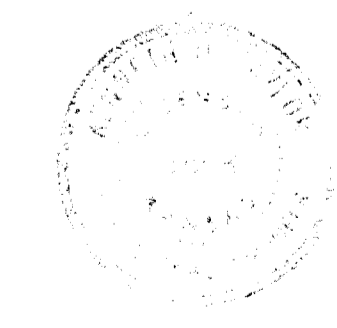
DRAINAGE AREA
2200 ACRES ± ± 44.56 MILES
1" = 2000'



BORING LOG
B-7 & B-3

ELEVATION	AREA ACRES	CAPACITY ACRE FEET
1326	1.24	0
1328	2.21	25.4
1330	3.45	47.20
1331	10.25	117.05
1332	11.56	134.03
1334	15.75	175.44
1335	18.15	212.41
1336	20.25	231.00
1338	27.26	310.71
1340 TOP OF DAM	33.39	377.06

- CL - STIFF, DARK GRAY-BROWN, SANDY CLAY.
- ML - MEDIUM DENSE, DARK BROWN, SANDY SILT.
- SC-CL - MEDIUM, BROWN, CLAYEY SAND.
- SC - LOOSE, YELLOW-BROWN, CLAYEY SAND.
- SM - LOOSE, YELLOW-BROWN, SILTY SAND.
- SP - LOOSE, YELLOW-BROWN, FINE-MEDIUM SAND WITH CLAY SEAMS.
- SW - LOOSE, YELLOW-BROWN, FINE-COURSE, SAND.



K. O. TAYLOR, PE
1542 S. ST. FRANCIS
WICHITA, KANSAS
AUG. 1971
REVISED NOV. 17, 1971
REVISED JAN. 23, 1972

EARTHFILL DAM IN THE
NW 1/4 SEC. 24-27-2W
FOR
LV BELL

DATE	REVISION	BY	DATE