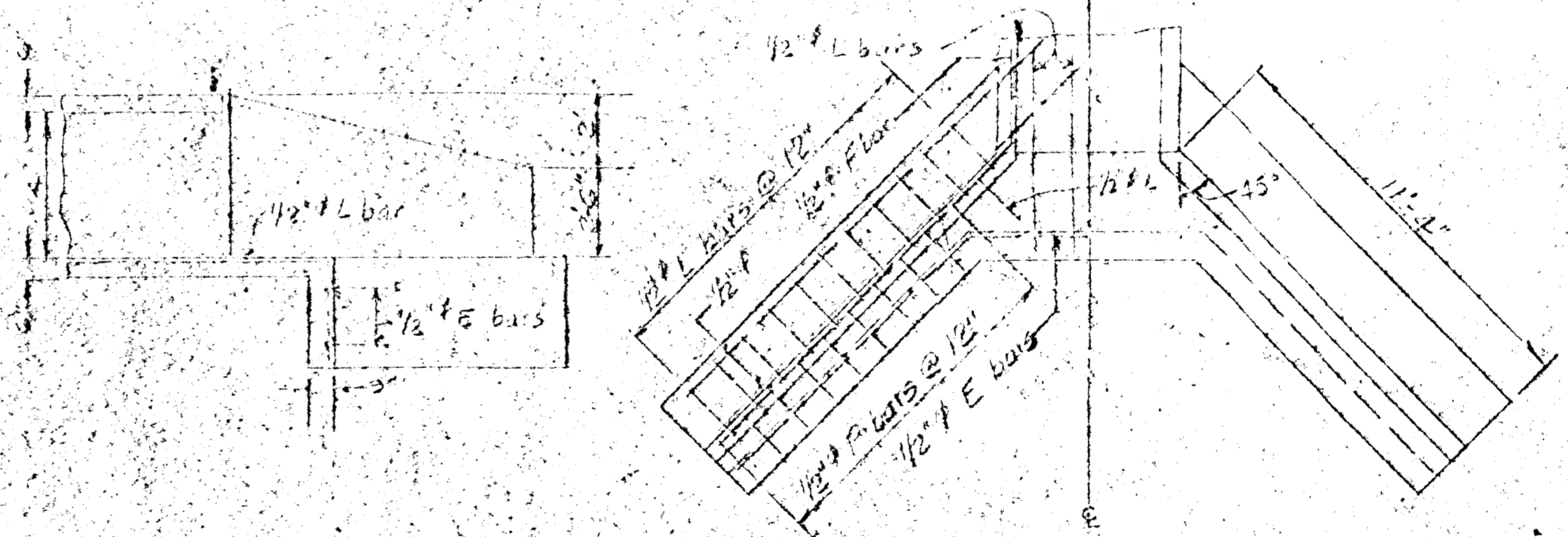
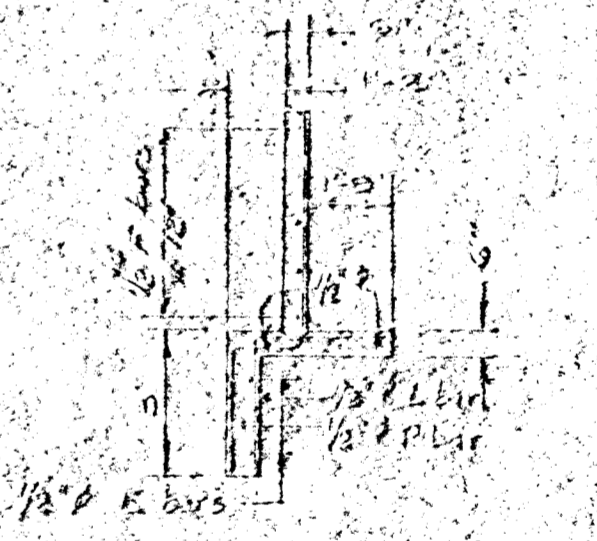


ELEV.	Q
1333.0	0
1334.0	432
1335.0	752
1336.0	1264
1337.0	1786
1338.0	2290
1339.0	2750
1340.0	3150
1341.0	3472
1342.0	3200

SPILLWAY CAPACITY  
Cu. Ft. per Second



WINGWALL



SECT. THRU WINGWALL

**NOTES**  
 Compaction of embankments for earth dam and spillway shall be compacted to or greater than 90% of Standard density. Moisture content at time of compaction shall be uniform and not lower than 3PP below optimum moisture content. (P.P. = percentage points)  
 Concrete for outlet box shall conform to Kansas State highway specs. for Class A concrete. Reinf. steel and construction methods shall conform to State highway specs. for concrete structures.  
 Seed spillway with K-31 Paspalum grass.  
 The fill areas for earth dam and spillway embankments shall be cleared of all vegetation and debris. Security fill areas to blend with embankment.  
 Embankment material for earth dam & spillway shall be free from vegetation and debris.  
 Fill material for all of dam and spillway embankments shall consist of selected CL material as designated in boring log.

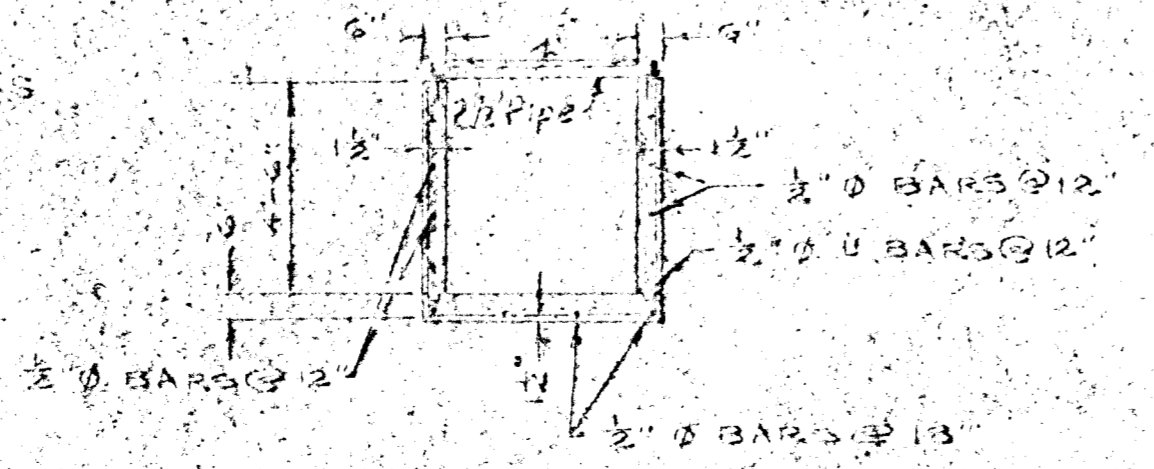
Approx. Quantities  
 Embankment for Dam 12,000 CY  
 Spillway 13,000 CY  
 Outlet Box Concrete 500 CY  
 Reinf. Steel 1,000 LB.

EARTH-FILL DAM IN THE  
 N.W. 1/4 SEC. 24-27-2W

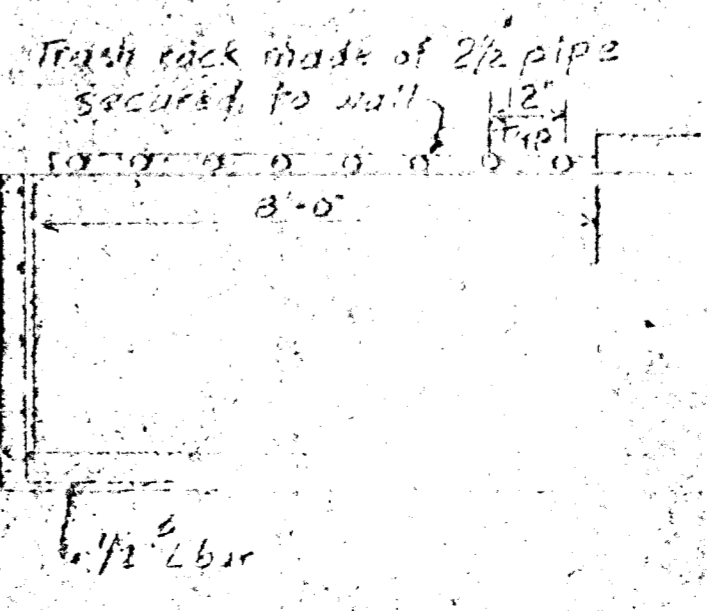
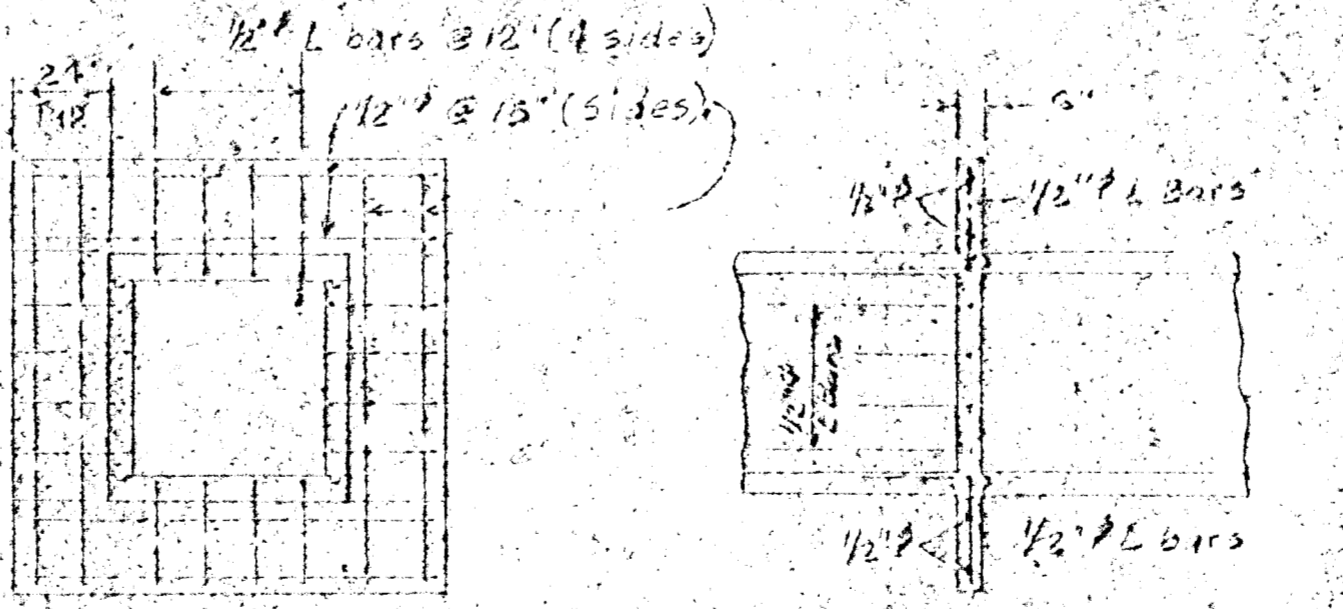


K. O. TAYLOR, P.E.  
 AUG. 1971  
 REVISED JAN. 23, 1972  
 REVERED JULY 7, 1979

B.M. ELEV. 1343.13 - 10' ON EAST HUBBARD OF R.C.D.C. 150' NORTH N.W. COR. N.W. 1/4 SEC. 24-27-2W.



OUTLET BOX



NO.	DATE	BY	CHKD.	APP.