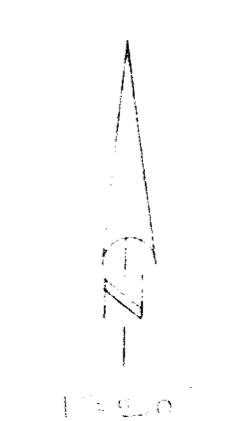
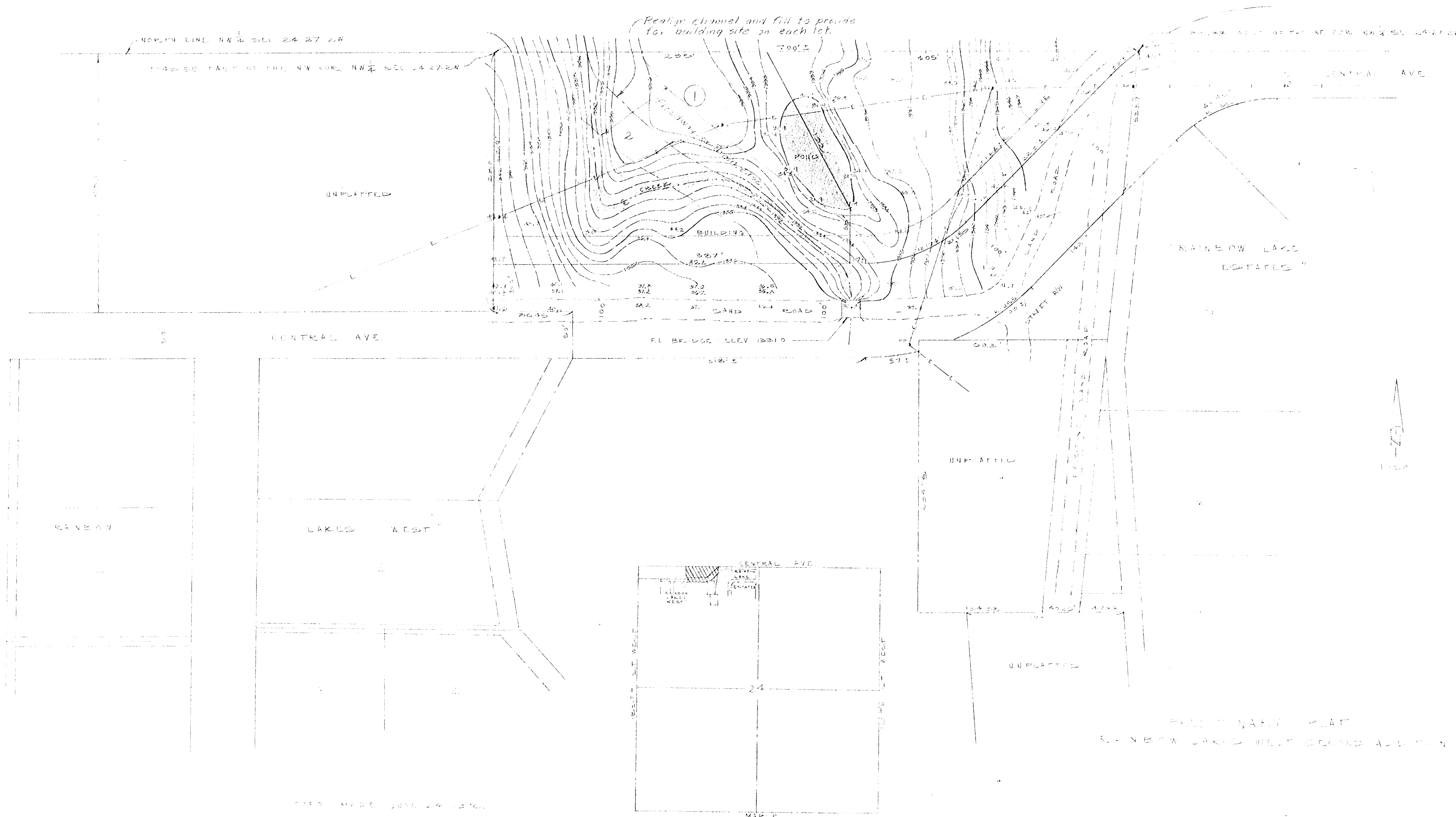


Realign channel and fill to provide for building site on each lot.



PRELIMINARY PLAT
RAINBOW LAKES WEST SECOND ADDITION

FIELD MADE, JUNE 29, 1970.

R.M. PLAT 1342 42-70 ON THE EAST QUARTER OF R14E, T14N, S1/4 NORTH OF THE NW COR., NW 1/4 SEC. 24-27-24W

VICINITY MAP
1:1000'

R.O. TAYLOR, P.E.
O.C. 200, 1970