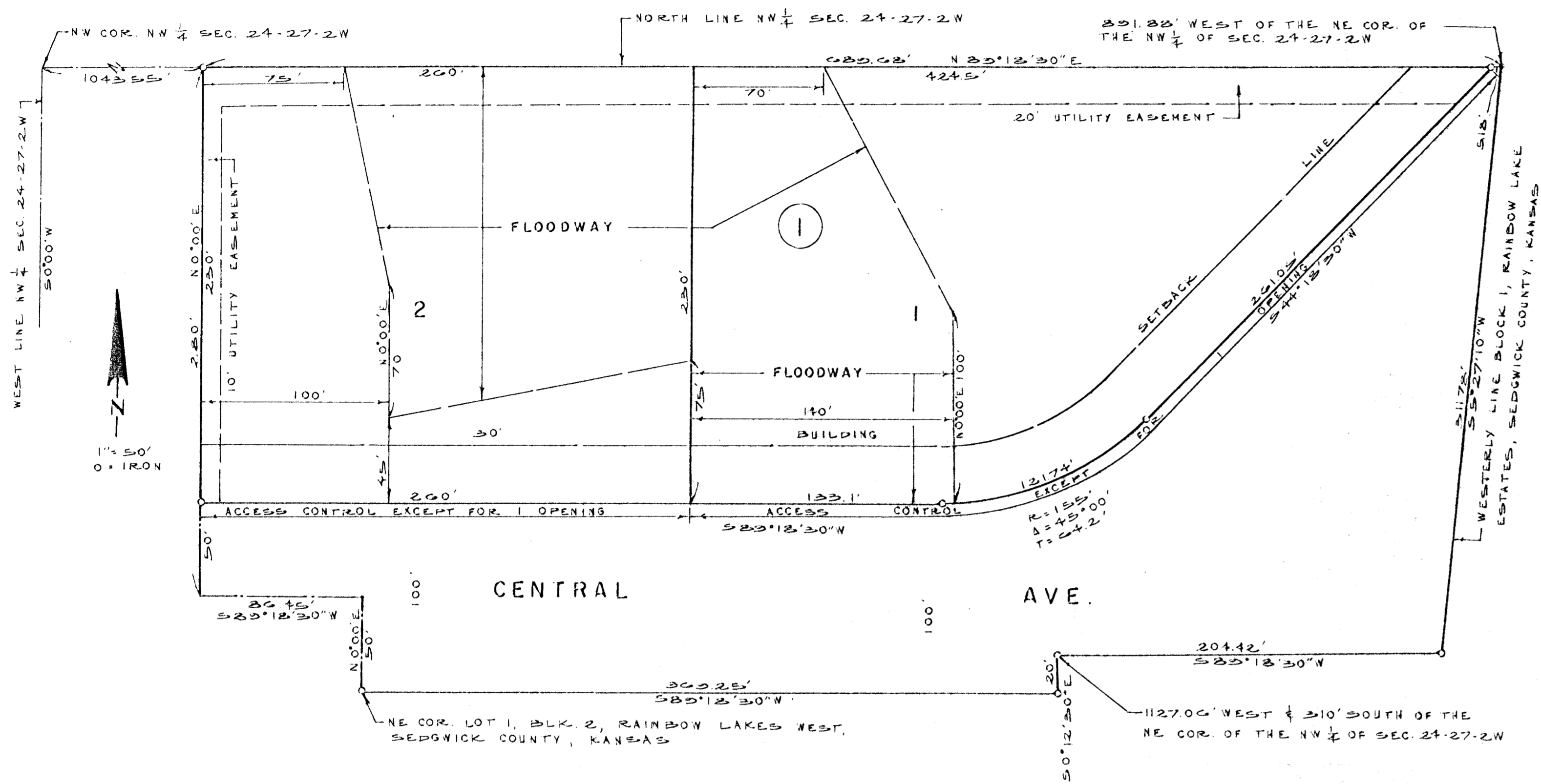


# RAINBOW LAKES WEST SECOND ADDITION

SEDGWICK COUNTY, KANSAS



State of Kansas, County of Sedgwick, SS.

I, Kenneth O. Taylor, Civil Engineer in said State and County, do hereby certify that I have surveyed and platted "RAINBOW LAKES WEST SECOND ADDITION", Sedgwick County, Kansas and that the accompanying plat is a true and correct exhibit of said survey described as follows: Commencing at the NW corner of the NW 1/4 of Section 24, T27S, R2W of the 6th P.M., Sedgwick County, Kansas; thence S0°00'00"W along the west line of said NW 1/4, 280 feet; thence N89°18'30"E parallel with the north line of said NW 1/4, 1043.55 feet to a point of beginning; thence N0°00'00"E parallel with the west line of said NW 1/4, 280 feet to the north line of said NW 1/4; thence N89°18'30"E along said north line of said NW 1/4, 689.68 feet to a point 891.88 feet west of the NE corner of said NW 1/4, said point being the NW corner of Rainbow Lake Estates, Sedgwick County, Kansas; thence S5°27'10"W along the west line of said Rainbow Lake Estates, 311.78 feet to a point 310 feet south of the north line of said NW 1/4; thence S89°18'30"W, 204.42 feet; thence S0°12'30"E, 20 feet; thence S89°18'30"W, 369.25 feet to the NE corner of Lot 1, Block 2, Rainbow Lakes West, Sedgwick County, Kansas; thence N0°00'00"E, 50 feet; thence S89°18'30"W, 86.45 feet to the point of beginning.

Kenneth O. Taylor, Civil Engineer

Know all men by these presents that we, Lorris V. Bell and Sharron Ann Bell, husband and wife, have caused the land described in the Civil Engineer's certificate to be platted into lots, a block and a street to be known as "RAINBOW LAKES WEST SECOND ADDITION", Sedgwick County, Kansas. Utility easements as indicated on the plat are hereby granted for the construction and maintenance of all public utilities. The street is hereby dedicated to and for the use of the public. All abutter's rights of access to or from Central Avenue, over and across the south line of Lots 1 and 2, Block 1, are hereby granted to the appropriate governing body, provided, however, that Lots 1 and 2, Block 1 shall have access to Central Avenue at one location for each lot to be designated by the appropriate governing body. No structure shall be constructed below a minimum pad elevation of \_\_\_\_\_, mean sea level datum.

The floodway shall be the responsibility of the owners of the property in the subdivision until such time as the governing body exercising jurisdiction elects to assume the responsibility for maintenance and improvement of the drainage, provided further that no building shall be constructed on or within said floodway, nor shall any fill, change of grade, creation of channel or other work be carried on without the permission of the Wichita-Sedgwick County Flood Control Office or their successors of office.

Lorris V. Bell Sharron Ann Bell

This plat approved and all dedications shown hereon accepted by the Board of City Commissioners of the City of Wichita, Kansas, this \_\_\_\_\_ day of \_\_\_\_\_, 19\_\_\_\_.

James M. Donnell, Mayor  
Donald C. Gisick, City Clerk

This plat approved and all dedications shown hereon accepted by the Board of County Commissioners of Sedgwick County, Kansas, this \_\_\_\_\_ day of \_\_\_\_\_, 19\_\_\_\_.

Tom Scott, Chairman  
Everett Patrick, Commissioner

ATTEST: John Hale, Commissioner

Dorothy K. White, County Clerk

State of Kansas, County of Sedgwick, SS.

The foregoing instrument was acknowledged before me this \_\_\_\_\_ day of \_\_\_\_\_, 19\_\_\_\_, by Lorris V. Bell and Sharron Ann Bell, husband and wife.

\_\_\_\_\_, Notary Public

My Commission expires: \_\_\_\_\_

This plat of "RAINBOW LAKES WEST SECOND ADDITION", Sedgwick County, Kansas has been submitted to and approved by the Wichita-Sedgwick County Metropolitan Area Planning Commission, Wichita, Kansas.

Dated this \_\_\_\_\_ day of \_\_\_\_\_, 19\_\_\_\_.

Wichita-Sedgwick County Metropolitan Area Planning Commission

By William J. Goebel, Chairman

Robert A. Lakin, Secretary

Entered on transfer record this \_\_\_\_\_ day of \_\_\_\_\_, 19\_\_\_\_.

Dorothy K. White, County Clerk

State of Kansas, County of Sedgwick, SS.

This is to certify that this instrument was filed for record in the Register of Deeds Office, at \_\_\_\_\_ o'clock \_\_\_\_\_ a.m., on the \_\_\_\_\_ day of \_\_\_\_\_, 19\_\_\_\_.

Betta F. McCart, Register of Deeds

Pat Kettler, Deputy