

| ELEV. | Acres<br>AREA A.F. | Prd<br>Vol.<br>Elevs<br>(A.F.) | Time to<br>fill @<br>1600 cfs |
|-------|--------------------|--------------------------------|-------------------------------|
| 1315  | 12.47              | 0                              |                               |
| 1316  | 12.75              | 12.8                           |                               |
| 1317  | 13.02              | 25.5                           |                               |
| 1318  | 13.30              | 38.7                           |                               |
| 1319  | 13.58              | 52.1                           | 13.5                          |
| 1320  | 13.87              | 65.9                           | 27.2                          |
| 1321  | 14.15              | 79.7                           | 41.2                          |
| 1322  | 14.44              | 94.2                           | 55.6                          |
| 1323  | 14.73              | 108.3                          | 70.2                          |
| 1324  | 15.02              | 123.8                          | 85.1                          |
| 1325  | 15.30              | 139.0                          | 100.4                         |
| 1326  | 15.59              | 154.6                          | 115.7                         |

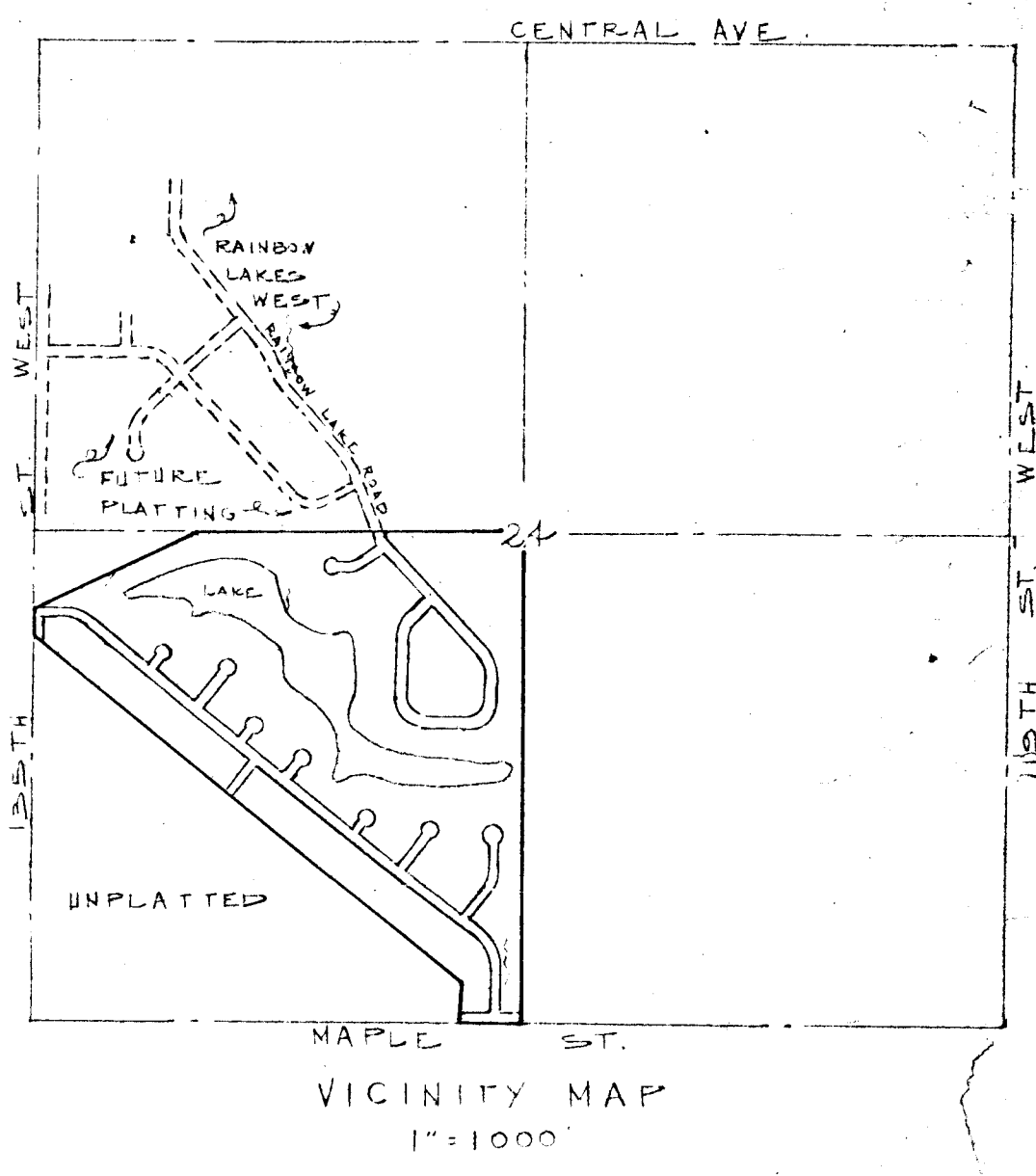
D.A. = 1116 AC.  
 T.C. = 1.8 Hr.  
 Q = 1600 cfs  
 Ave. Vol. of runoff in 1.3 hrs =  
 $\frac{1600 \times 2 \times 103 \text{ Min} \times 60 \text{ Sec}}{60}$   
 = 5,134,000 CF = 119.0 A.F.

ESTIMATED EXCAVATION - 2,820,000 CU. YDS.  
 ESTIMATED FILL REQR. - 2,780,000 CU. YDS.

MINIMUM BUILDING PAD ELEV. 1329.0 MEAN  
 SEA LEVEL DATUM FOR ALL LOTS ADJACENT  
 THE PROPOSED LAKE.

Fill to E11320

AERIAL PHOTOGRAPHY BY KUCERA & ASSOC.  
 HORIZONTAL & VERTICALS CONTROLS BY K.O. TAYLOR, P.E.  
 - Fill Line



BM - ELEV. 1339.46 : USGS. AT NW COR MAPLE  
 AND 135 TH ST. WEST

REVISED COPY

PRELIMINARY PLAT  
 RAINBOW LAKES WEST THIRD ADDITION

FOR: RAINBOW LAKES, INC.

K.O. TAYLOR, P.E.  
 MARCH 8, 1978