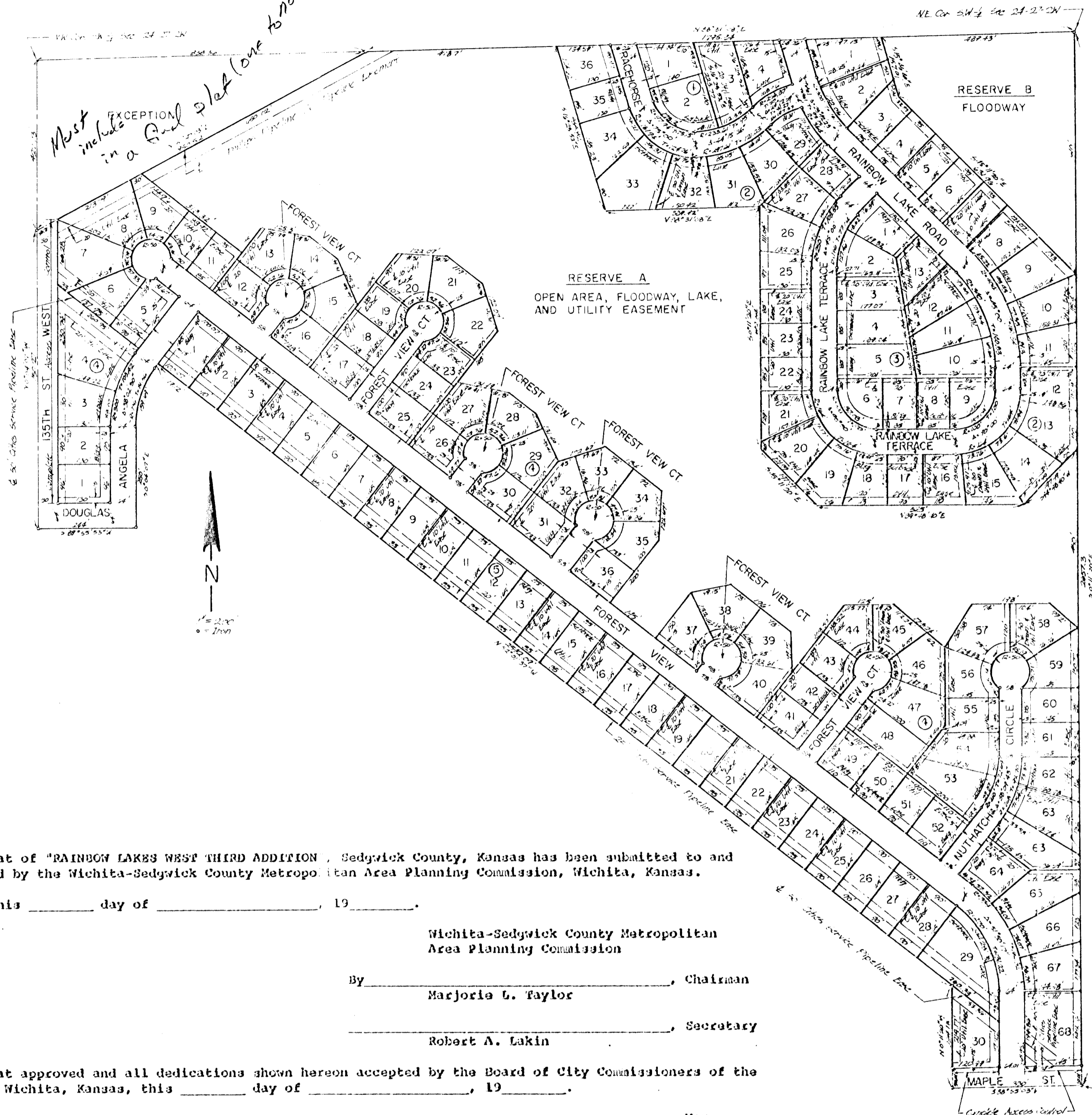


RAINBOW LAKES WEST THIRD ADDITION  
SEDGWICK COUNTY, KANSAS



This plat of "RAINBOW LAKES WEST THIRD ADDITION", Sedgwick County, Kansas has been submitted to and approved by the Wichita-Sedgwick County Metropolitan Area Planning Commission, Wichita, Kansas.

Dated this \_\_\_\_\_ day of \_\_\_\_\_, 19\_\_\_\_.

Wichita-Sedgwick County Metropolitan Area Planning Commission

By \_\_\_\_\_, Chairman  
Marjorie L. Taylor

\_\_\_\_\_, Secretary  
Robert A. Lakin

This plat approved and all dedications shown hereon accepted by the Board of City Commissioners of the City of Wichita, Kansas, this \_\_\_\_\_ day of \_\_\_\_\_, 19\_\_\_\_.

\_\_\_\_\_, Mayor  
Connie A. Peters

\_\_\_\_\_, City Clerk  
Donald C. Gislack

This plat approved and all dedications shown hereon accepted by the Board of County Commissioners of Sedgwick County, Kansas, this \_\_\_\_\_ day of \_\_\_\_\_, 19\_\_\_\_.

\_\_\_\_\_, Chairman  
Everett Patrick

\_\_\_\_\_, Commissioner  
Tom Scott

\_\_\_\_\_, Commissioner  
John Hale

ATTEST:  
\_\_\_\_\_, County Clerk  
Dorothy K. White

State of Kansas, County of Sedgwick, SS.

This is to certify that this instrument was filed for record in the Register of Deeds Office at \_\_\_\_\_ o'clock \_\_\_\_\_ a.m., on the \_\_\_\_\_ day of \_\_\_\_\_, 19\_\_\_\_.

\_\_\_\_\_, Register of Deeds  
Betta F. McCart

\_\_\_\_\_, Deputy  
Pat Kettler

State of Kansas, County of Sedgwick, SS.

I, Kenneth O. Taylor, Civil Engineer in said State and County, do hereby certify that I have surveyed and platted "RAINBOW LAKES WEST THIRD ADDITION", Sedgwick County, Kansas and that the accompanying plat is a true and correct exhibit of said survey described as follows: A tract in the SW 1/4 of Section 24, T27S, R22W of the 6th P.M., Sedgwick County, Kansas, described as follows: Beginning at the SE corner of said SW 1/4; thence S88°55'03"W along the south line of said SW 1/4, 330 feet; thence N0°11'20"W parallel to the east line of said SW 1/4, 264.18 feet; thence N52°01'37"W, 2342.09 feet; thence S37°58'23"W, 19.12 feet to the P.C. of a curve; thence southerly on a curve to the left having a radius of 236 feet and a deflection angle of 38°02'30", 159.69 feet to the P.T. of said curve; thence S0°04'07"E parallel to the west line of said SW 1/4, 250 feet; thence S89°55'53"W, 244 feet to the west line of said SW 1/4; thence N0°04'07"W along the west line of said SW 1/4, 750.27 feet to a point 427.73 feet south of the NW corner of said SW 1/4; thence N61°41'03"E, 950.52 feet to a point on the north line of said SW 1/4, 838.36 feet east of the NW corner of said SW 1/4; thence N88°31'08"E along the north line of said SW 1/4, 1795.34 feet to the NE corner of said SW 1/4; thence S0°11'20"E, 2657.3 feet to the point of beginning.

\_\_\_\_\_, Civil Engineer  
Kenneth O. Taylor

Know all men by these presents that Rainbow Lakes, Inc., by L. V. Bell, President and L. V. Bell and Sharon A. Bell, husband and wife, have caused the land described in the Civil Engineer's certificate to be platted into lots, blocks, streets and reserves to be known as "RAINBOW LAKES WEST THIRD ADDITION", Sedgwick County, Kansas. Utility easements as indicated on the plat are hereby granted for the construction and maintenance of all public utilities. Drainage easements as indicated on the plat are hereby granted for drainage purposes. Drainage easements are hereby granted over all of Lot 68, Block 4 and Lot 30, Block 5. Reserve A is reserved for a lake, open space, utility easements and a floodway. Reserve B is reserved for a floodway. The floodways shall be the responsibility of the owners of the property in the subdivision until such time as the governing body exercising jurisdiction elects to assume the responsibility for maintenance and improvement of the drainage, provided further that no building shall be constructed on or within said floodway, no shall any fill, change of grade, creation of channel or other work be carried on without the permission of the Wichita-Sedgwick County Flood Control Office or their successors in office.

All abutter's rights of access to or from 135th St. West, over and across the west line of Lots 1 through 7 inclusive, Block 4, are hereby granted to the appropriate governing body. All abutter's rights of access to or from Maple St., over and across the south line of Lots 68, Block 4 and Lot 30, Block 5, are hereby granted to the appropriate governing body.

The streets are hereby dedicated to and for the use of the public.

No structure shall be constructed below a minimum pad elevation of 1329 mean sea level datum on lots 37 to 59 inclusive, Block 4.

Rainbow Lakes, Inc.

ATTEST: \_\_\_\_\_, President  
L. V. Bell

\_\_\_\_\_, Secretary  
Sharon A. Bell

\_\_\_\_\_,  
L. V. Bell Sharon A. Bell

State of Kansas, County of Sedgwick, SS.

The foregoing instrument was acknowledged before me this \_\_\_\_\_ day of \_\_\_\_\_, 19\_\_\_\_ by L. V. Bell, President of Rainbow Lakes, Inc., a Kansas corporation, on behalf of the corporation.

\_\_\_\_\_, Notary Public  
My Commission expires: \_\_\_\_\_

State of Kansas, County of Sedgwick, SS.

The foregoing instrument was acknowledged before me this \_\_\_\_\_ day of \_\_\_\_\_, 19\_\_\_\_ by L. V. Bell and Sharon A. Bell, husband and wife.

\_\_\_\_\_, Notary Public  
My Commission expires: \_\_\_\_\_

First State Bank and Trust Co., Salina, Kansas, by \_\_\_\_\_, mortgagee of part of the land described in the Civil Engineer's certificate, does hereby consent to the platting of "RAINBOW LAKES WEST THIRD ADDITION", Sedgwick County, Kansas.

First State Bank and Trust Co.,  
Salina, Kansas

ATTEST: \_\_\_\_\_

State of Kansas, County of Sedgwick, SS.

The foregoing instrument was acknowledged before me this \_\_\_\_\_ day of \_\_\_\_\_, 19\_\_\_\_ by \_\_\_\_\_ of First State Bank and Trust Co., Salina, Kansas, a Kansas corporation, on behalf of the corporation.

\_\_\_\_\_, Notary Public  
My Commission expires: \_\_\_\_\_

Entered on transfer record this \_\_\_\_\_ day of \_\_\_\_\_, 19\_\_\_\_.

\_\_\_\_\_, County Clerk  
Dorothy K. White