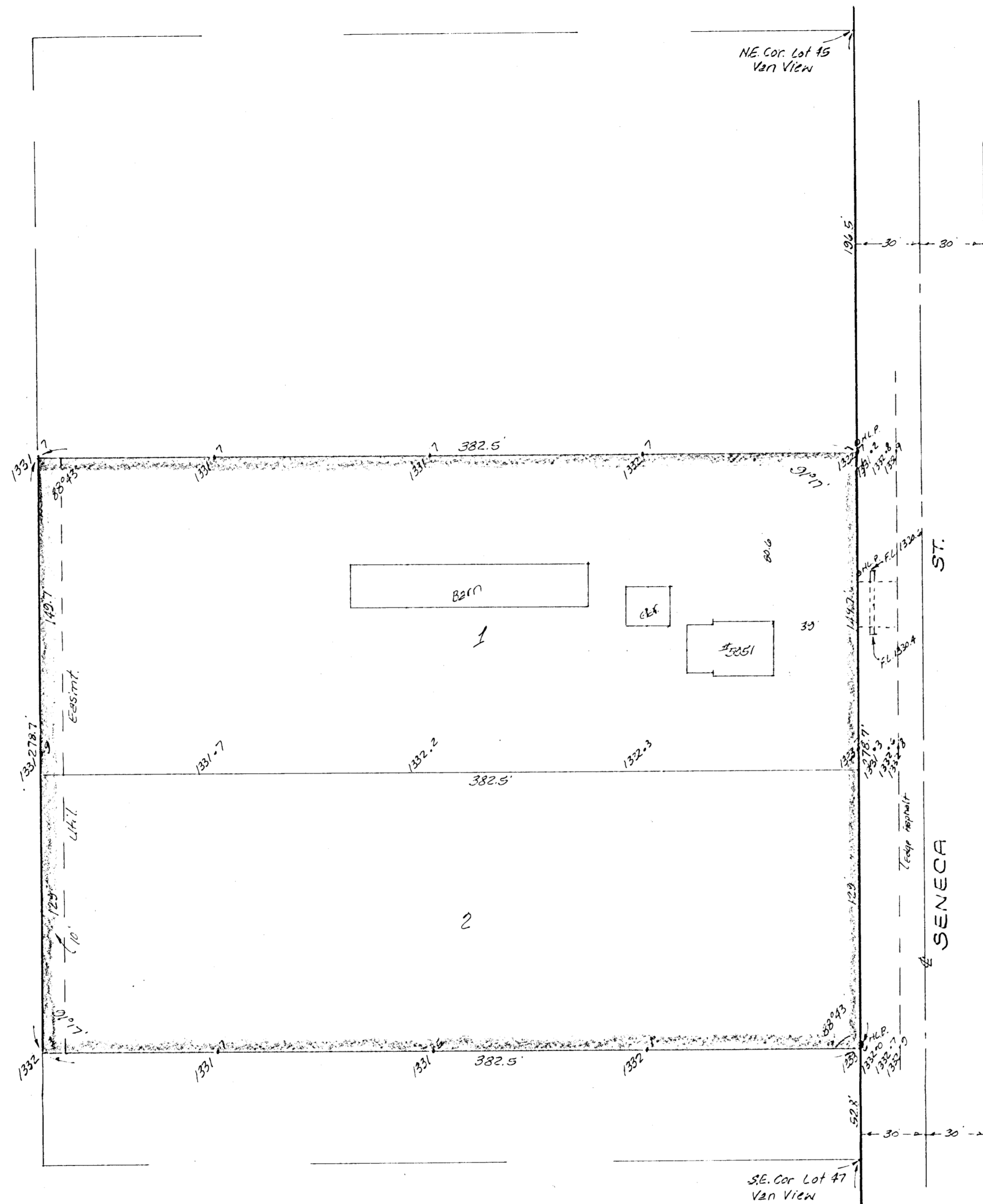


1" = 40'
ELEV. = M.S.L.

BENCH MARK: (COUNTY)
61ST ST. NO. 3 SENECA
a cut on SE Cor of base of
Indian treaty Mon. 80' N.W. of
Intersection
Elevation = 1333.81 M.S.L.



SKETCH PLAT
HOLLINGSWORTH ADDITION

THE SOUTH 67.5 FEET OF LOT 45 AND THE NORTH 211.2 FEET
OF LOT 47, VAN VIEW, SEDGWICK COUNTY, KANSAS.

MYRON B. HOLLINGSWORTH

57TH ST. NO.