

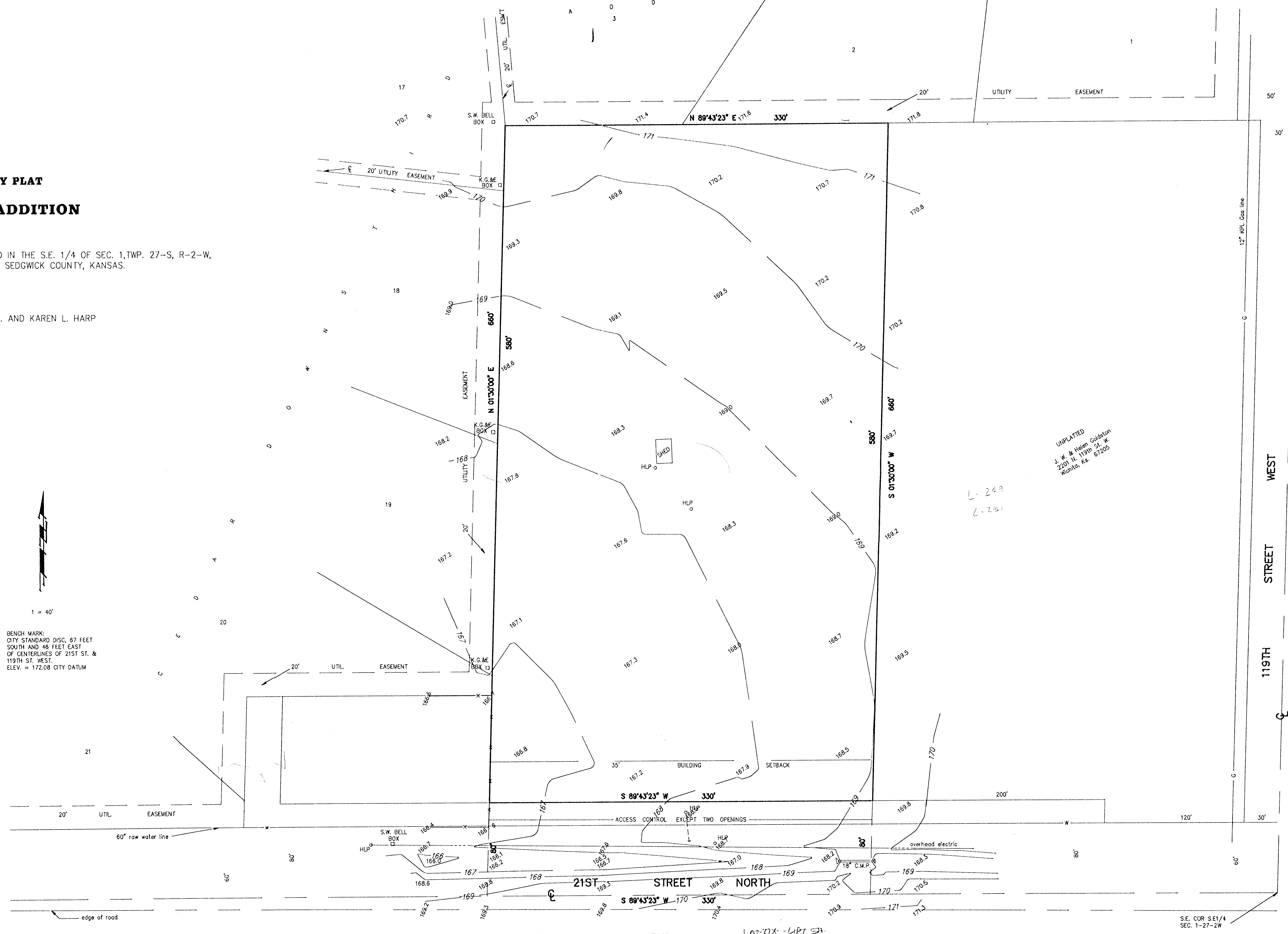
**PRELIMINARY PLAT**  
**HARP'S ADDITION**

A TRACT OF LAND IN THE S.E. 1/4 OF SEC. 1, TWP. 27-S, R-2-W,  
 OF THE 6TH P.M., SEDGWICK COUNTY, KANSAS.

OWNERS: LLOYD L. AND KAREN L. HARP



BENCH MARK:  
 CITY STANDARD DISC, 67 FEET  
 SOUTH AND 48 FEET EAST  
 OF CENTERLINES OF 21ST ST. &  
 119TH ST. WEST.  
 ELEV. = 172.08 CITY DATUM



UNPLATTED  
 J. W. & Helen Goldston  
 2201 N. 119th St. W  
 Wichita, Ks. 67205

L-249  
 L-251

LAT 278 - LIFT ST.  
 LAT 276 - SWL  
 CH. SS. 2KT. 10' Deep  
 Flo 157<sup>02</sup>