

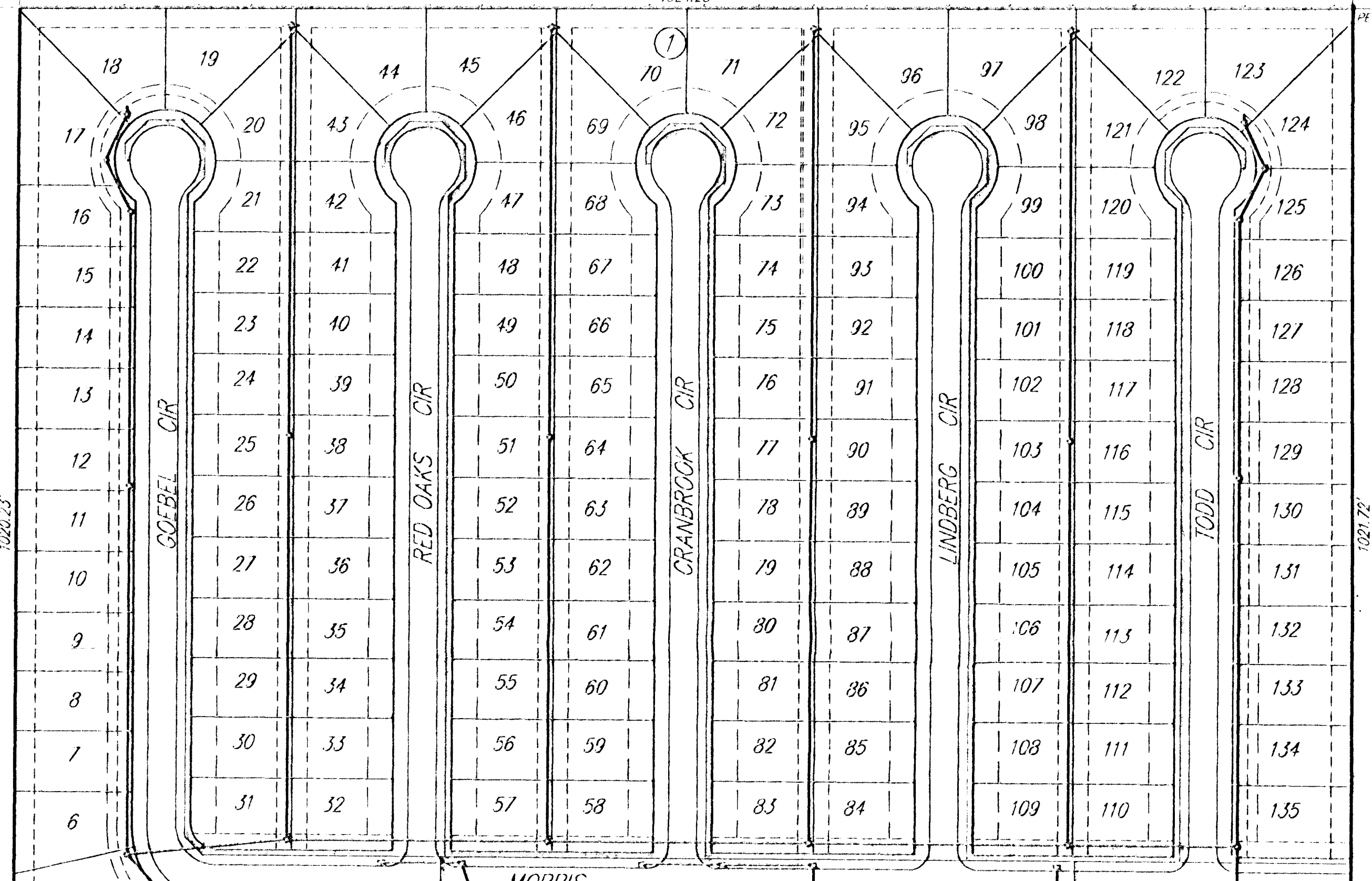
KANSAS TURNPIKE AUTHORITY RIGHT-OF-WAY
 CONDEMNATION CASE NO. A-55770

CONDUIT DATA

100	15"	0.86%
101	18"	1.63%
102	18"	0.48%
103	21"	0.85%
104	30"	0.98%
105	30"	2.64%
106	24"	1.32%
107	30"	1.61%
108	24"	1.17%
109	24"	1.85%
110	27"	0.90%

POND DATA:
 SIDE SLOPES 4:1
 FLOW OUT 27" RCP = 1343.80
 TOP ELEVATION = 1351.00
 100 YR. WATER SURFACE = 150.00
 OUTLET WEIR: CONCRETE, L = 30'
 FLOW ELEVATION WEIR = 1349.40
 TOP OF WEIR ELEVATION = 1350.00

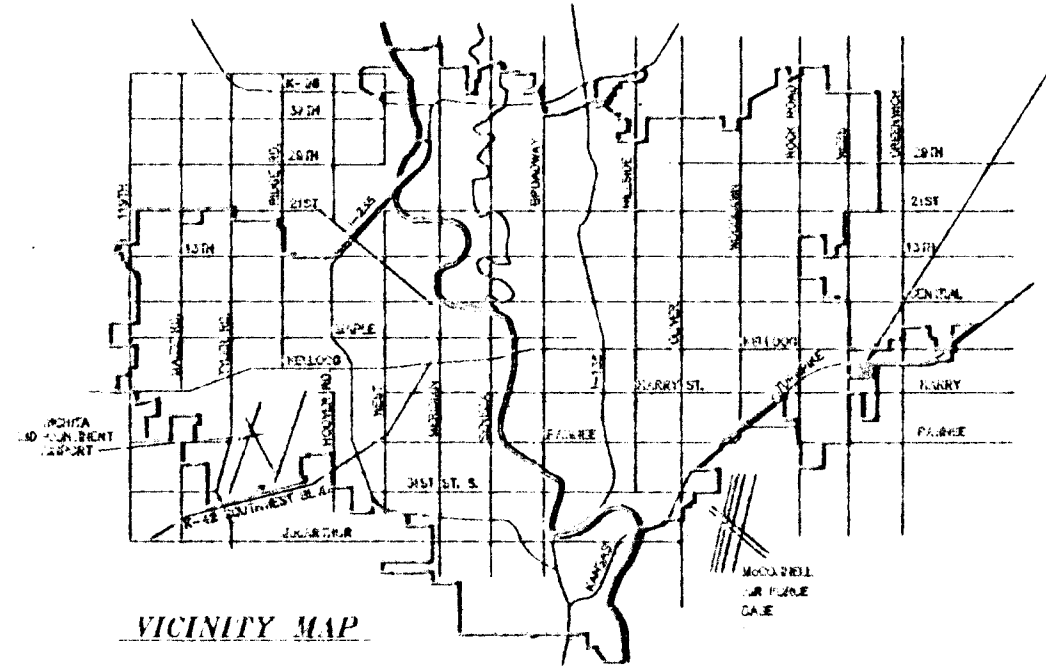
LOT 1
 FIRST ASSEMBLY OF GOD ADDITION



1" = 100'
 ELEV = MSL
 GROSS SIZE OF PROPERTY
 1,352,921.71 SQ. FT.
 31.058 ACRES

UTILITY PLAN HARRISON PARK 2ND ADDITION

WICHITA, SEDGWICK COUNTY, KANSAS.



PROJECT SITE
 HARRISON PARK 2ND ADDITION

UTILITY PLAN
 HARRISON PARK 2ND ADDITION

SRB 924 NORTH MAIN WICHITA, KANSAS 67203 316-234-8008 FAX 264-4621

SAVOY, RUGGLES & BOHM, P.A.
 ENGINEERING & SURVEYING

PROJECT NUMBER

DESIGN	DESIGN	REVIEW	DATE	UTILITY	SRB JOB
--------	--------	--------	------	---------	---------

DWG FILE: CHA\Drawings\harrison
 PROJECT NO. 06A0423P