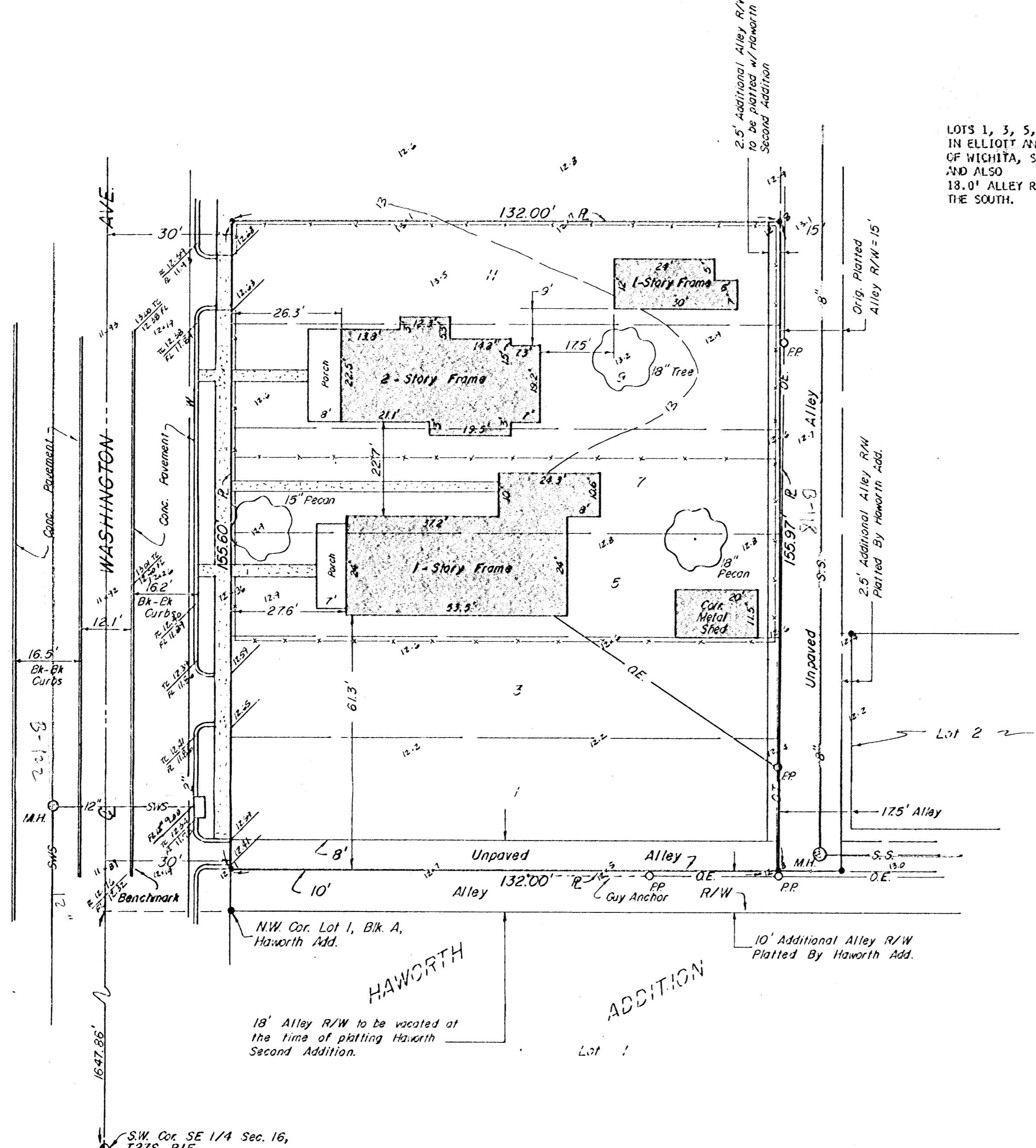
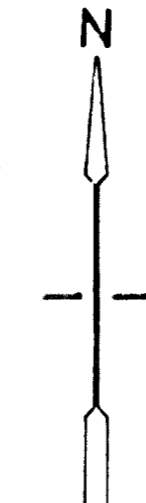


PRELIMINARY PLAT
of
HAWORTH SECOND ADDITION
To Wichita, Sedgwick Co., Ks.

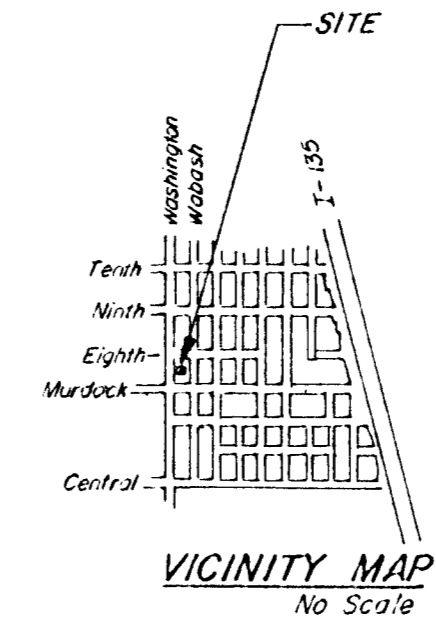


LEGAL DESCRIPTION

LOTS 1, 3, 5, 7, 9 AND 11 ON WASHINGTON AVENUE IN ELLIOTT AND HAWORTH'S ADDITION TO THE CITY OF WICHITA, SEDGWICK COUNTY, KANSAS, AND ALSO 18.0' ALLEY RIGHT-OF-WAY ADJACENT THERETO ON THE SOUTH.



1" = 20'
• = Iron



Legend -

- W = Water Main
- G = Gas Main
- SS = Sanitary Sewer
- M.H. = Manhole
- SWS = Storm Water Sewer
- 12.0 = Spot Elevation
- OE = Overhead Electric
- OT = Overhead Telephone
- PP = Power Pole

BENCHMARK -

Top of W. Curb, N. Bound Washington Ave. on S. Property Line Extended. Elev. 112.76 City Datum.

Add 100.00 to spot elevations to convert to city datum.

Moehring & Associates
Consulting Engineers
Wichita
May 11, 1987

18' Alley R/W to be vacated at the time of platting Haworth Second Addition.

S.W. Cor. SE 1/4 Sec. 16, T27S, R1E