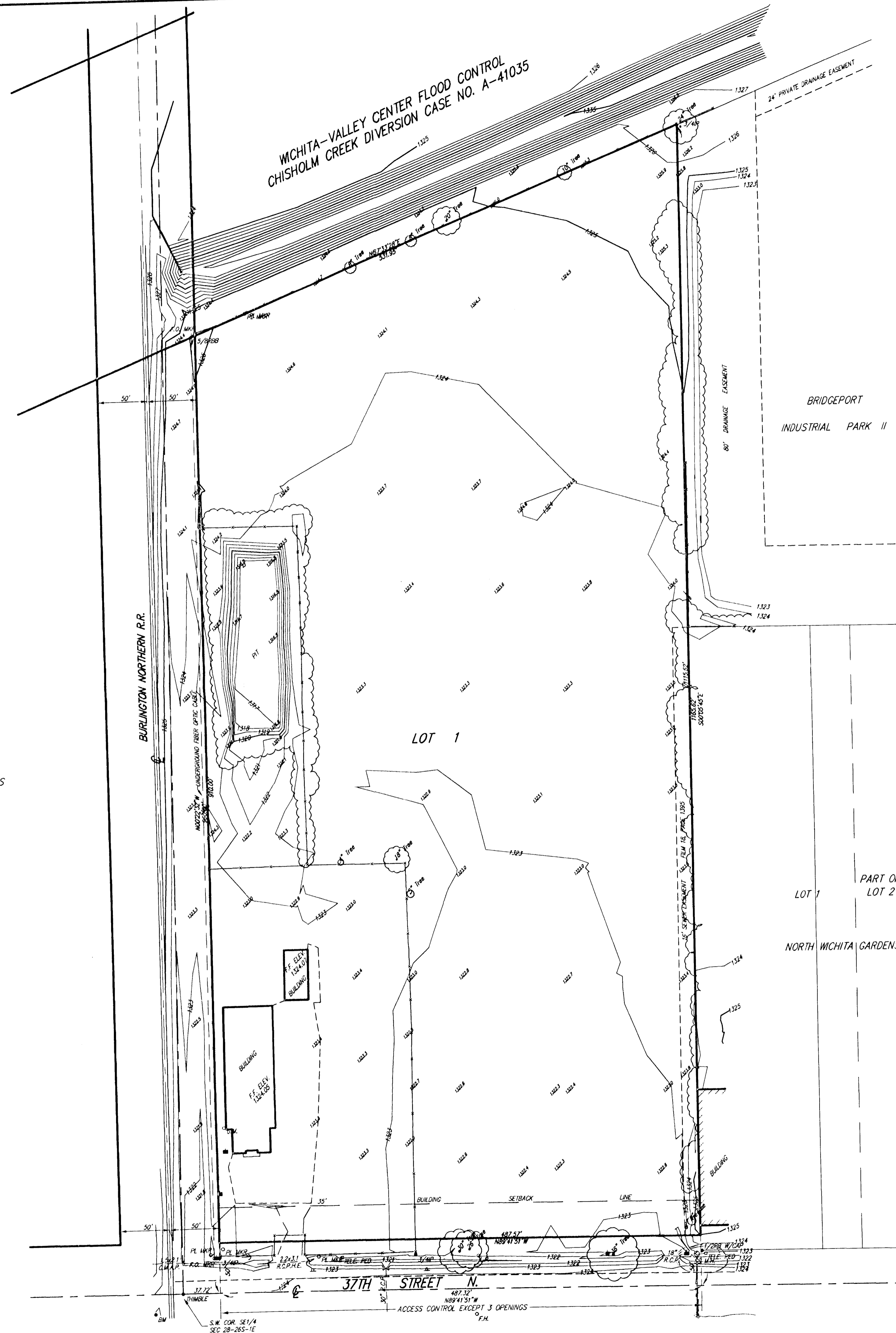


PRELIMINARY PLAT R. L. HAYES 2ND ADDITION WICHITA, SEDGWICK COUNTY, KANSAS

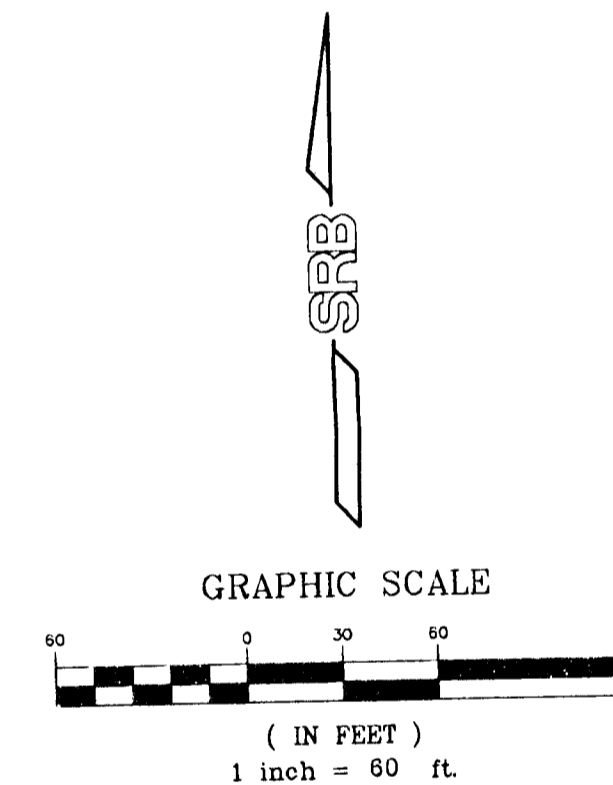


DESCRIPTION:

Beginning at a point in the South line and 37.66 feet East of the S.W. corner of the SE1/4 of Section 28, Township 26 South, Range 1 East of the 6th P.M., Sedgwick County, Kansas, said point being in the east Right-of-way line of the St. Louis & San Francisco Railroad; thence North along said East Right-of-way line, a distance of 959.75 feet to a point in the southerly line of the Wichita-Valley Center Flood Control Right-of-way; thence Northeasterly along the south line of said Right-of-way, a distance of 214.21 feet; thence South parallel with the east line of the St. Louis & San Francisco Railroad Right-of-way, a distance of 1042.37 feet to a point in the south line of the SE1/4 of said Section 28; thence west 198.63 feet to the point of beginning, except the south 35 feet thereof, AND beginning at a point in the South line and 236.29 feet east of the S.W. corner of the SE1/4 of Section 28, Township 26 South, Range 1 East of the 6th P.M., Sedgwick County, Kansas; thence north parallel with the east line of the St. Louis & San Francisco Railroad Right-of-way, a distance of 1042.37 feet to a point in the south line of the Wichita-Valley Center Flood Control Right-of-way; thence northeasterly along the south line of said Right-of-way, a distance of 317.40 feet more or less, to a point in the east line of the west 32.0 acres of the SE1/4 of said Section 28; thence south along the east line of the west 32.0 acres of said SE1/4, a distance of 1164.72 feet to a point in the south line of said SE1/4; thence west 288.58 feet to the point of beginning, except the south 35 feet thereof.

Robert L. Hayes, Trustee of the Robert L. Hayes
Revocable Trust, Dated April 23, 1992
800 e. 37th St. N.
Wichita, Kansas 67219

Phone 838-8000



BENCH MARK:
City of Wichita Bench Mark. Conc. base for
Railroad Signal, south side 37th St. N.
19.6' south of ctr line 37th St. and 13.6'
west of west rail of R.R.
Elev.=1324.49 (NGVD)

NOTE:
Costal Refining Pipelines are abandoned.
Costal Pipeline Easement released on
Film 1767 at page 530.

GROSS SIZE:
520,640.58 SQ. FT.
11.95 ACRES

NET SIZE:
496,268.37 SQ. FT.
11.39 ACRES

G-265
guarantee SS

R. L. HAYES
ADDITION