

PRELIMINARY PLAT HAYES ADDITION

WICHITA, SEDGWICK COUNTY, KANSAS

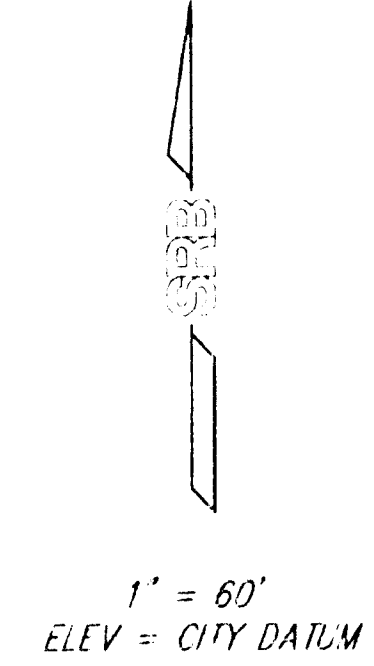
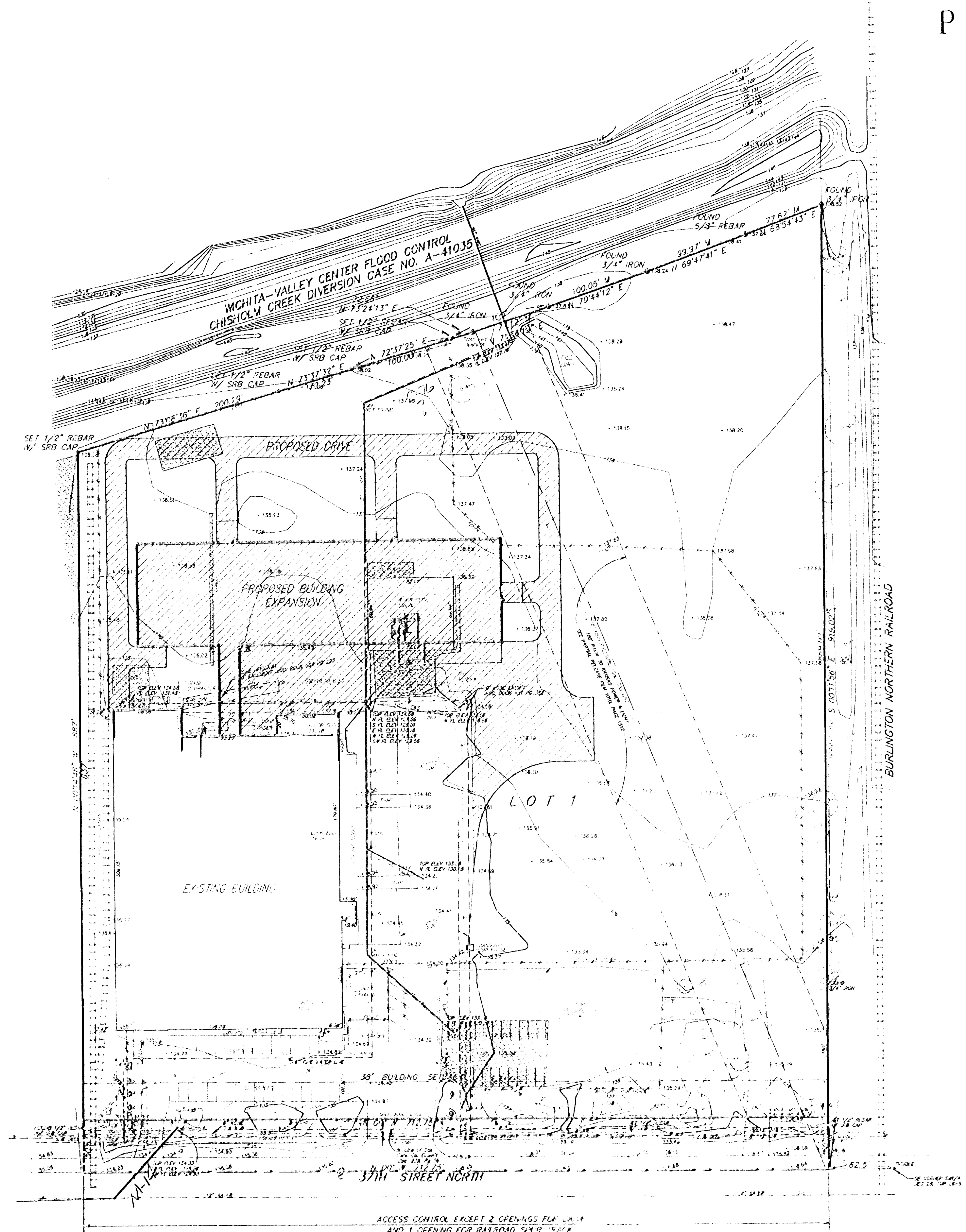
A tract beginning at a point 35 feet North and 409.75 feet West of the Southeast corner of the SW1/4 of Sec 28, Twp 26-S, R-1-E of the 6th P.M., Sedgwick County, Kansas; thence West parallel with the South line of said Sec 28 a distance of 365.5 feet; thence North at an included angle of 90°17' a distance of 107 feet; thence East parallel with the South line of the SW1/4 of said Sec 28, a distance of 365.5 feet; thence South a distance of 107 feet to the point of beginning.

A tract beginning at a point 62.5 feet West and 185 feet North of the Southeast corner of the SW1/4 of Section 28, Twp 26-S, R-1-E of the 6th P.M., Sedgwick County, Kansas, said point being on the West line of the St. L. & S.F. Railway Right of Way; thence West parallel with South line of said Sec 28, a distance of 150 feet; thence South parallel with the West line of said railway right-of-way a distance of 150 feet; thence West parallel with and 35 feet North of the South line of the SW1/4 of said Sec 28, a distance of 197.25 feet; thence North at an included angle of 90°17' a distance of 107 feet; thence West parallel with the South line of the SW1/4 of said Sec 28, a distance of 365.5 feet; thence North at an included angle of 90°17' a distance of 245 feet, more or less, to a point in the South line of the Wichita Flood Control right-of-way; thence Northeastly along the South line of said right-of-way a distance of 751 feet, more or less, to the West right-of-way line of said railway; thence South 734.5 feet to the point of beginning.

A tract beginning 35 feet North and 62.37 feet West of the Southeast corner of the SW1/4 of Sec 28, Twp 26-S, R-1-E of the 6th P.M., Sedgwick County, Kansas; thence North 150 feet; thence West 150.13 feet; thence South 150 feet; thence East 150.13 feet to the point of beginning.

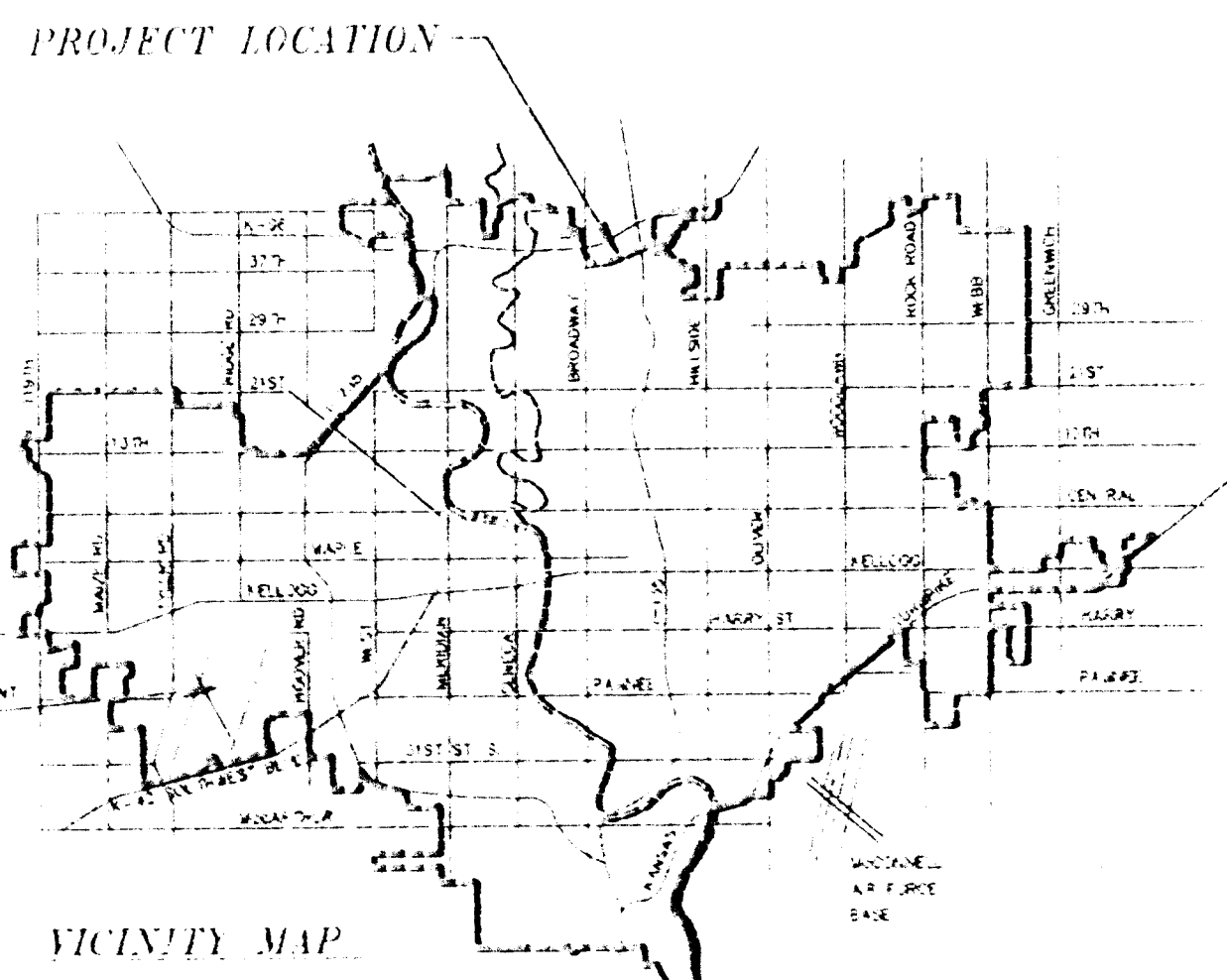
Hayes Company, Inc.
Robert L. Hayes
800 E 37th St. No.
Wichita, Kansas 67219

Phone 338-8000



BENCH MARK:
Top of Fire Hydrant S.E. Corner 37th & Emporia
Elev. 135.69 City Datum

Top of iron in thimble at S.E. Corner SW1/4
Elev. 136.50 City Datum



ACCESS CONTROL EXCEPT 2 OPENINGS FOR LOT 1
AND 1 OPENING FOR RAILROAD SPLIT TRACK

SRB 924 NORTH MAIN 315-264-8108
WICHITA, KANSAS 67203 FAX 264-4121
SAVOY, RUGGLES & BOHM, P.A.
ENGINEERING & SURVEYING

DWG FILE 0036PP-RLA
PROJECT NO. 95400324

AUGUST 17, 1995