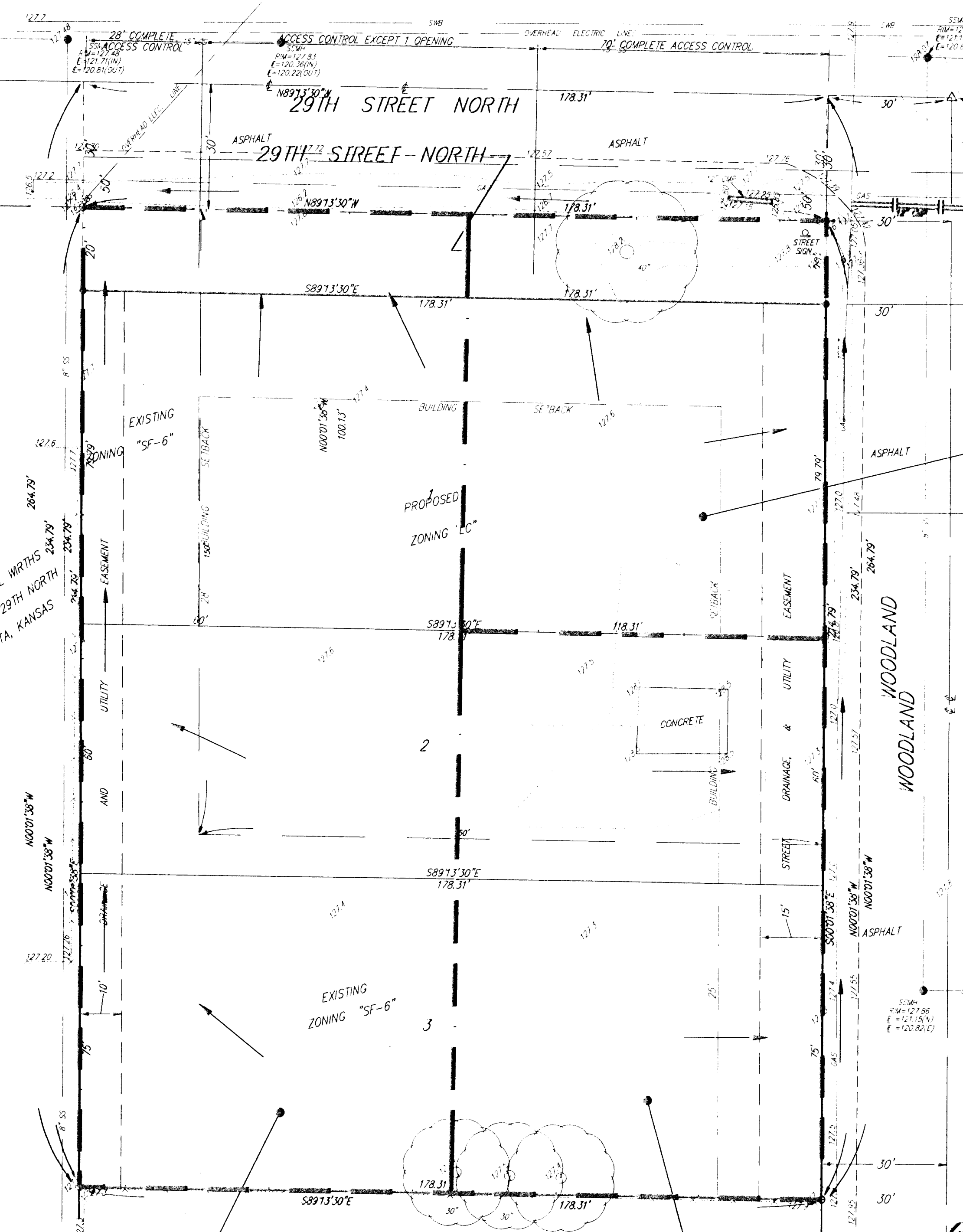


DRAINAGE PLAN

HEATHER ADDITION

WICHITA, SEDGWICK COUNTY, KANSAS



D.A. = 0.50 ac
 "C" = 0.54
 $I_2 = 3.83$ in/hr
 $I_s = 4.56$ in/hr
 $I_{100} = 7.36$ in/hr
 $Q_2 = 1.0$ cfs
 $Q_5 = 1.2$ cfs
 $Q_{100} = 2.0$ cfs

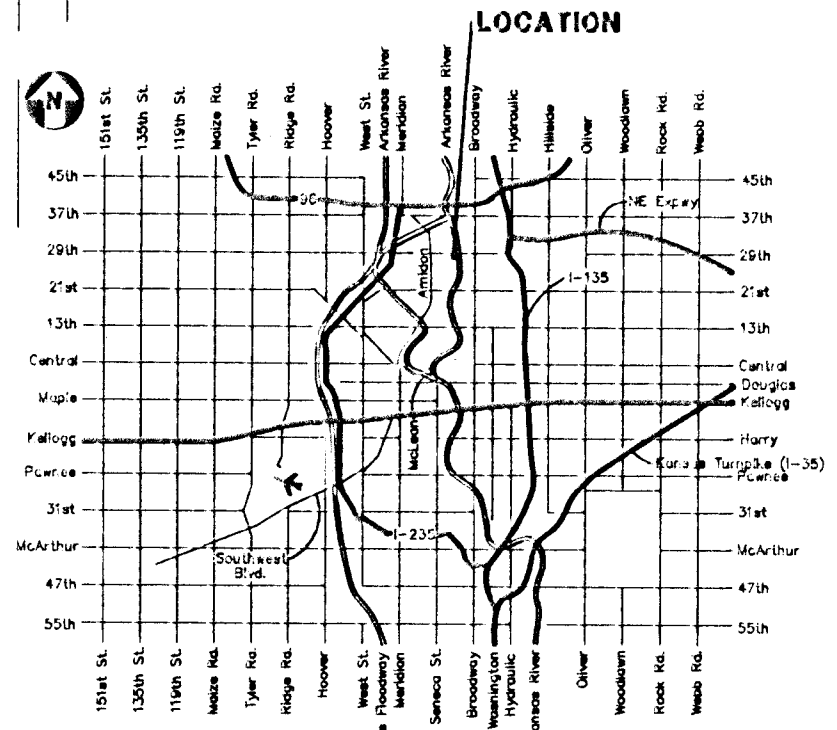
D.A. = 0.3 ac
 "C" = 0.54
 $I_2 = 3.83$ in/hr
 $I_s = 4.56$ in/hr
 $I_{100} = 7.36$ in/hr
 $Q_2 = 0.6$ cfs
 $Q_5 = 0.7$ cfs
 $Q_{100} = 1.2$ cfs

D.A. = 0.2 ac
 "C" = 0.90
 $I_2 = 3.83$ in/hr
 $I_s = 4.56$ in/hr
 $I_{100} = 7.36$ in/hr
 $Q_2 = 0.7$ cfs
 $Q_5 = 0.8$ cfs
 $Q_{100} = 1.3$ cfs

OWNER
 LEROY DAVIS
 3741 SALINA
 WICHITA, KANSAS 67204
 (316) 838-9134

LEGAL DESCRIPTION
 BEGINNING 30 FEET WEST OF THE NORTHEAST CORNER OF LOT 4, SECTION 5, TOWNSHIP 27 SOUTH, RANGE 1 EAST OF THE 6TH P.M., SEDGWICK COUNTY, KANSAS; THENCE SOUTH PARALLEL WITH THE EAST LINE OF SAID LOT 4, 263.5 FEET; THENCE WEST 178.5 FEET; THENCE NORTH 263.5 FEET TO THE TO THE NORTH LINE OF LOT 4; THENCE EAST 178.5 FEET TO THE PLACE OF BEGINNING.

BENCHMARK
 RAILROAD SPIKE IN POLE 139 FEET, MORE OR LESS, EAST OF THE CENTERLINE OF WOODLAND AND 26.5 FEET, MORE OR LESS, SOUTH OF THE CENTERLINE OF 29TH STREET NORTH.
 ELEVATION 127.96 CITY DATUM



VICINITY MAP

LEGEND

- FH = Fire Hydrant
- LP = Light Pole
- PP = Power Pole
- ⊠ Sign = Sign
- SSMH = Sanitary Sewer Manhole
- T = Tree

May 4, 1998

BAUGHMAN COMPANY P.A.
 ENGINEERING, SURVEYING, & PLANNING
 316-262-7271 • 316-611-5 • WICHITA, KANSAS 67211
PLANNING DEPARTMENT