

Scale: 1" = 50'

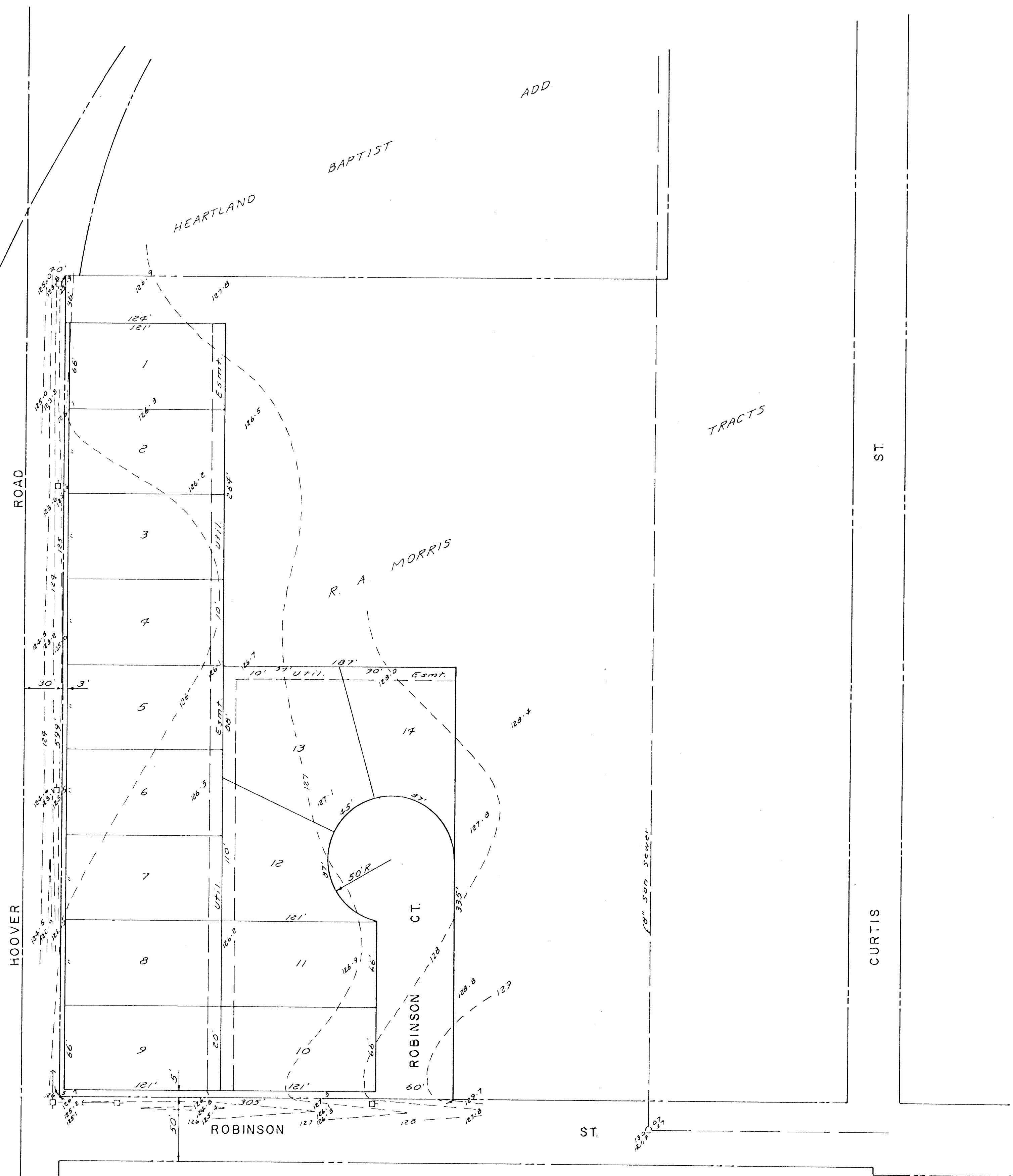
NO. 235

HIGHWAY

UNPLATTED

INTERSTATE

Note: Nearest Water Main @ 9th St. & Hoover



R.A. MORRIS TRACTS

PRELIMINARY PLAT HEARTLAND BAPTIST 3RD ADDITION

PART OF LOTS 11 & 12, R.A. MORRIS TRACTS
OWNER - HEARTLAND BAPTIST CHURCH

B.M. - City Disc 34'E & 12' N.
E. Central & Hoover
Ct. 123.29