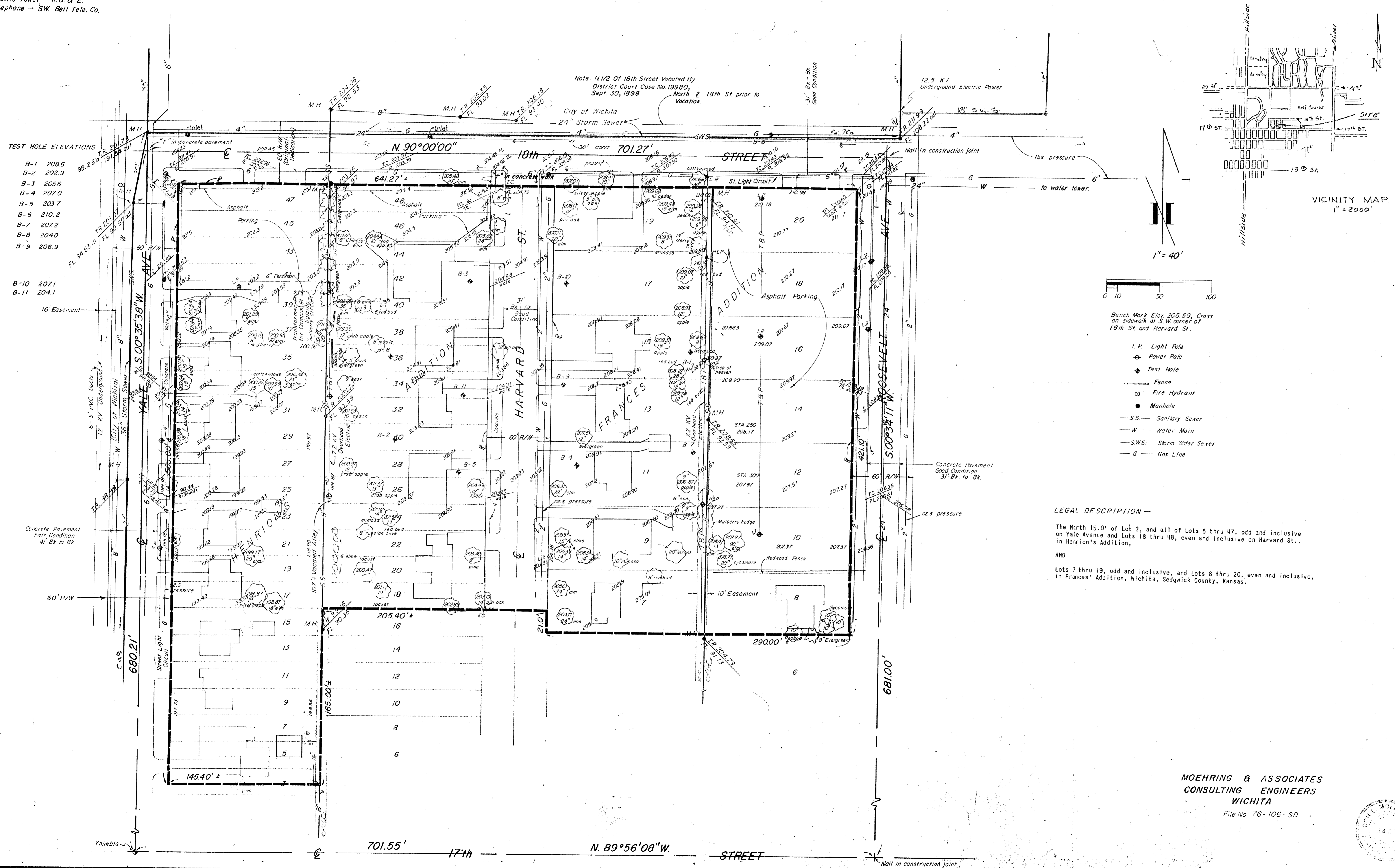


NOTES

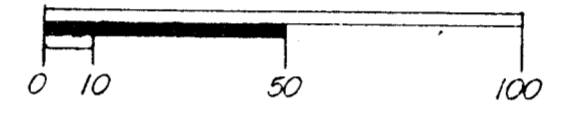
1. No sidewalks on south side of 18th, east side of Harvard, and west side of Roosevelt.
2. Natural Gas Mains - Gas Service Co.
3. Sanitary and Storm Sewers - City of Wichita
4. Water Mains - Wichita Water Dept.
5. Electric Power - K.G. & E.
6. Telephone - S.W. Bell Tele. Co.

PRELIMINARY PLAT OF HEALTH SCIENCES ADDITION

WICHITA, SEDGWICK COUNTY, KANSAS



VICINITY MAP
1" = 2000'



Bench Mark Elev. 205.59, Cross on sidewalk at S.W. corner of 18th St. and Harvard St.

- L.P. Light Pole
- Power Pole
- Test Hole
- Fence
- Fire Hydrant
- Manhole
- S.S. Sanitary Sewer
- W Water Main
- S.W.S. Storm Water Sewer
- G Gas Line

LEGAL DESCRIPTION -
 The North 15.0' of Lot 3, and all of Lots 5 thru 47, odd and inclusive on Yale Avenue and Lots 18 thru 48, even and inclusive on Harvard St., in Herrion's Addition,
 AND
 Lots 7 thru 19, odd and inclusive, and Lots 8 thru 20, even and inclusive, in Frances' Addition, Wichita, Sedgwick County, Kansas.

MOHRING & ASSOCIATES
 CONSULTING ENGINEERS
 WICHITA
 File No. 76-106-SD

