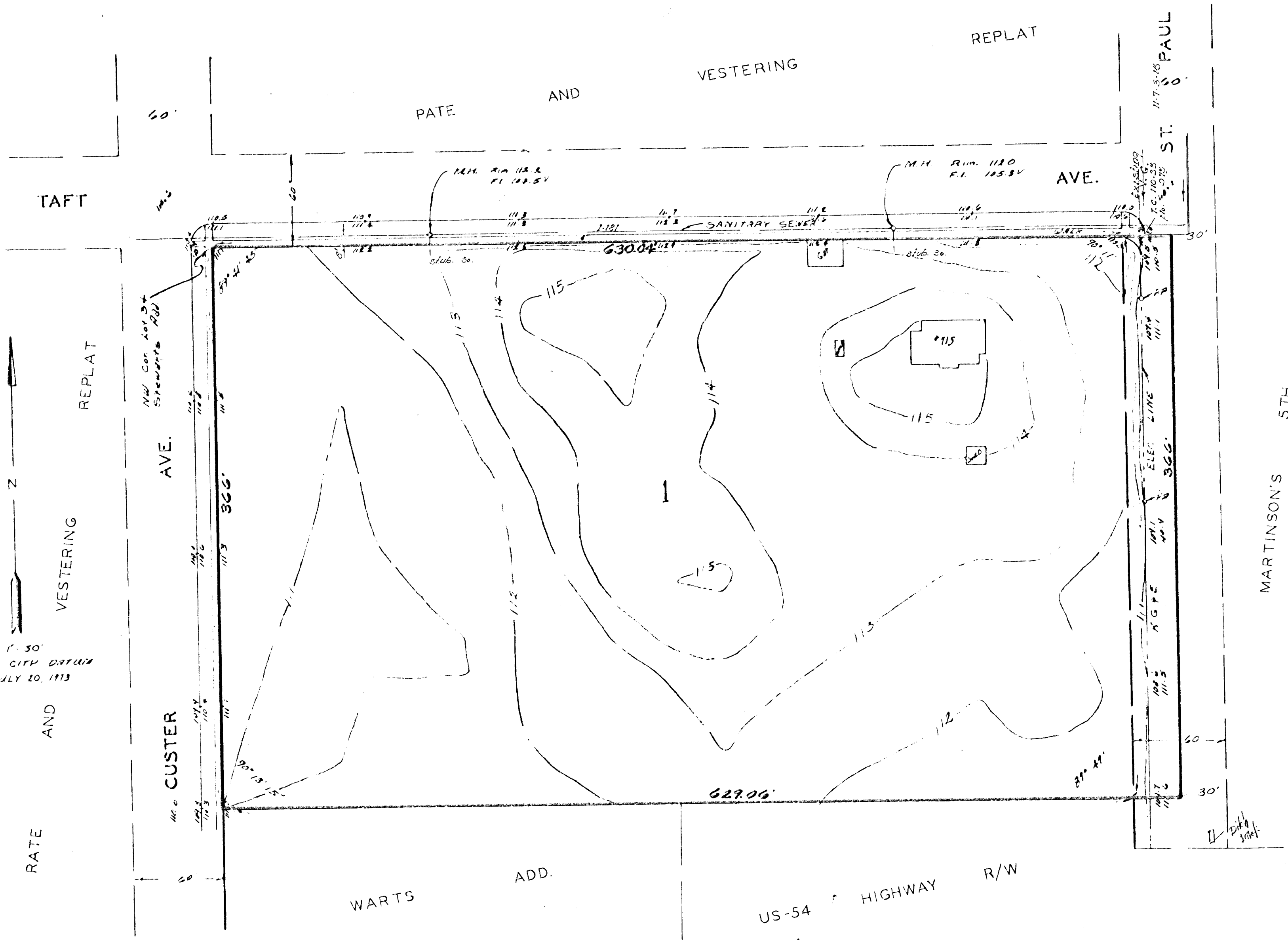


1" = 50'
ELEV. CITY DATUM
JULY 20, 1913

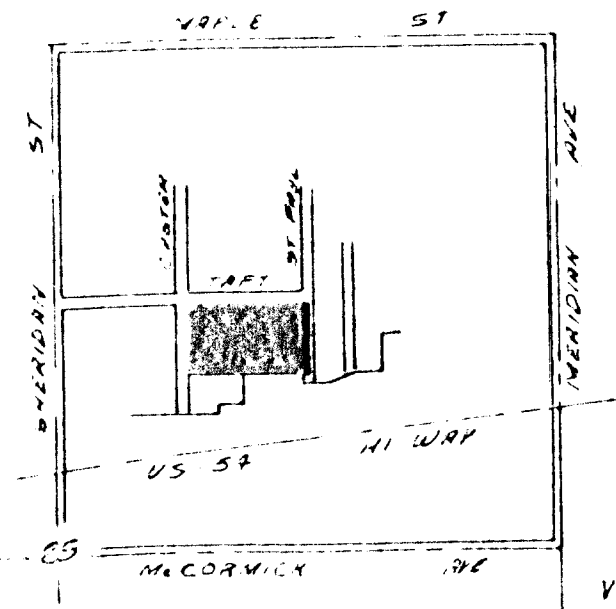


WARTS ADD. US-54 HIGHWAY R/W

PRELIMINARY PLAT

HAZEL'S 1ST. ADDITION

Replat of Part of Stewarts Add & Part of Wolf & Mackets Sub
All of WOLFF & MACKETS SUB.?
HERBERT KRUMSICK



VICINITY PLAT
1" = 1000'