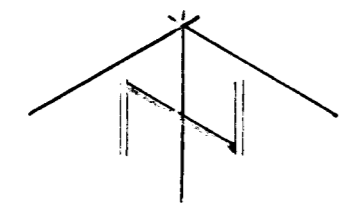
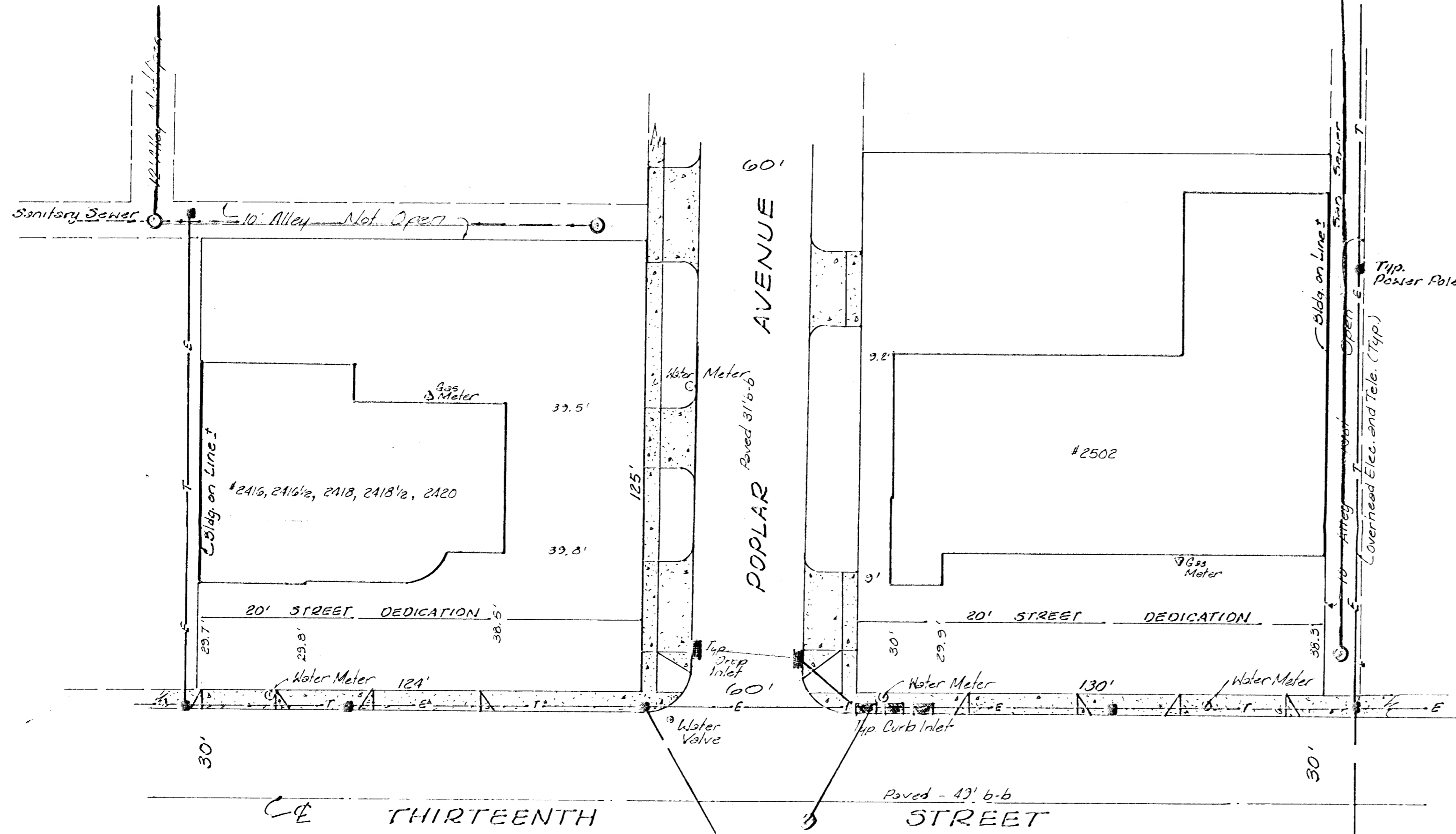


VICINITY SKETCH
"HAYS AND BELL ADDITION"
 WICHITA, KANSAS

SOUTHEAST QUARTER SECTION 10, T27S, R1E

C-205
 C-203
 B-200 Incidental Drainage
 13th St. W. Kansas to 12th Ave. W.



#381115
 SCALE: 1" = 25'
 17 JUNE, 1988

Owners - Subdividers:

Dean H. Hays
 1128 N. Market
 Wichita, Kansas 67214
 Phone No. 267-2739

Georgia M. Bell
 1745 N. Colorado
 Wichita, Kansas 67212
 Phone No. 683-7501