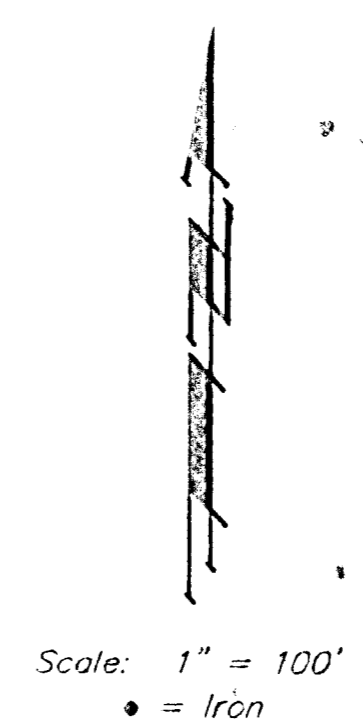
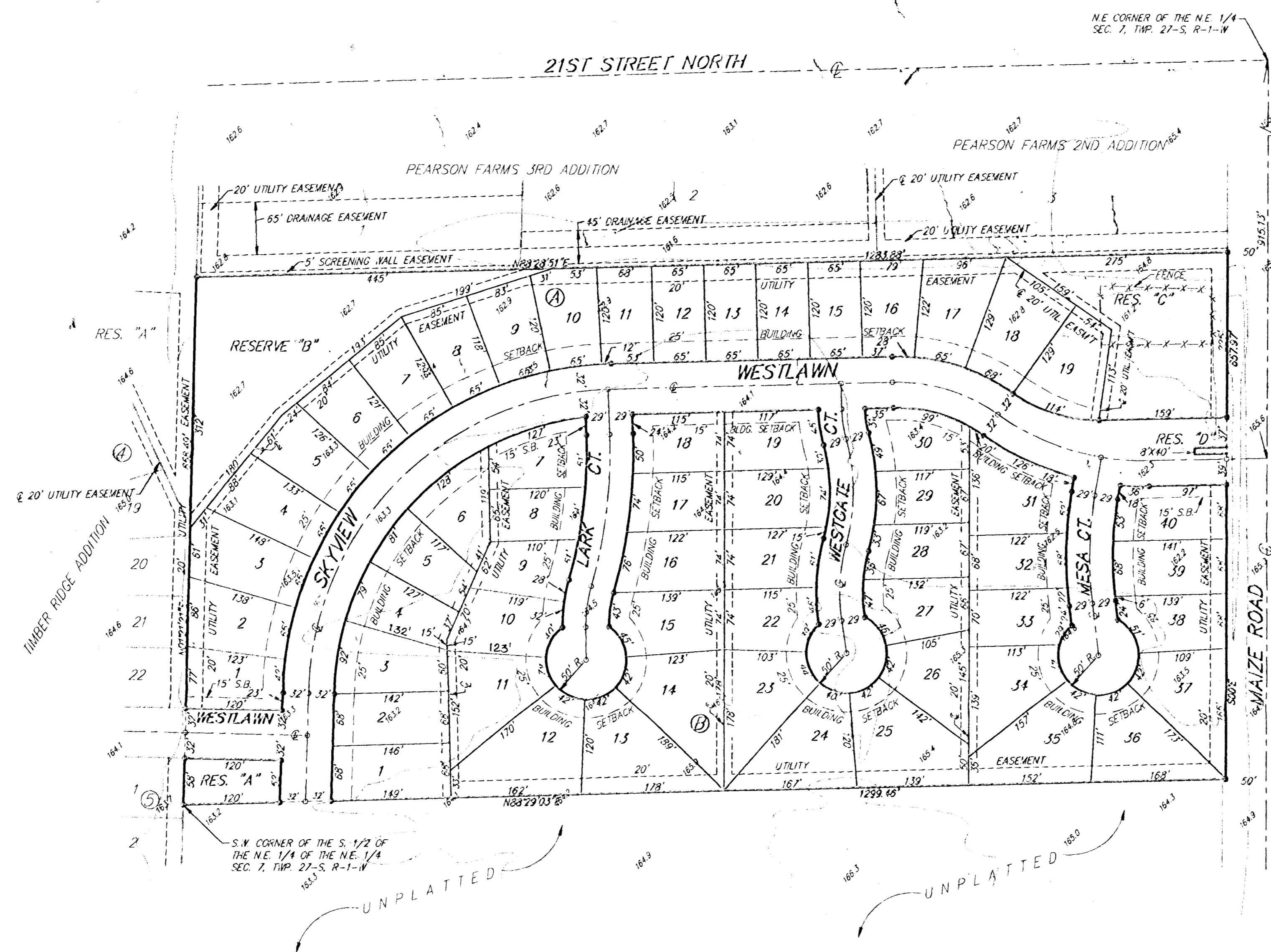


SKETCH PLAT
HEDGEAPPLE ADDITION
 WICHITA, SEDGWICK COUNTY, KANSAS

OFFICE COPY
 DO NOT REMOVE



LEGAL
 THE S 1/2 OF THE NE 1/4 OF THE
 NE 1/4 OF SEC. 7, T1P. 27-S, R-1-W
 OF THE 6TH P.M., SEDGWICK COUNTY,
 KANSAS, EXCEPT THE EAST 50 FEET
 THEREOF FOR ROAD.

OWNER:
 KELSEY INVESTMENTS
 ATTN: PAUL KELSEY
 11535 14TH ST. NO. CIR.
 WICHITA, KANSAS 67212
 PH: (316)229-8278

BENCHMARKS
 CITY STANDARD DISC 64" E.
 & 99" S. OF @ OF 21ST ST. NO.
 & MAIZE RD.
 ELEV.=164.30 (CITY DATUM)
 1351.70 (MSL)

"□" CUT ON TOP OF CURB N.
 SIDE OF WESTLAWN, 15' W. OF
 S.W. CORNER OF LOT 19, BLK. 1,
 TIMBER RIDGE ADDITION
 ELEV.=163.85 (CITY DATUM)
 1351.25 (MSL)