





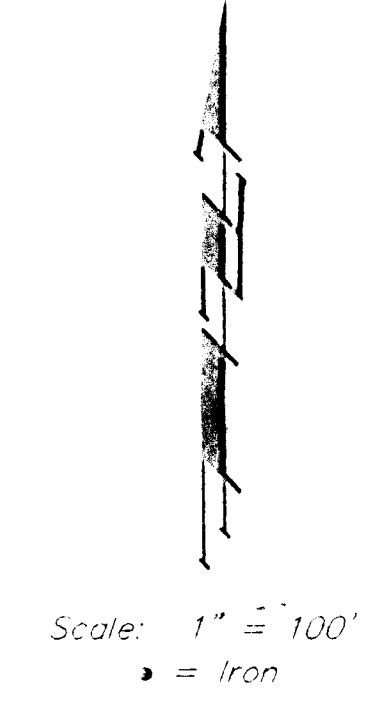
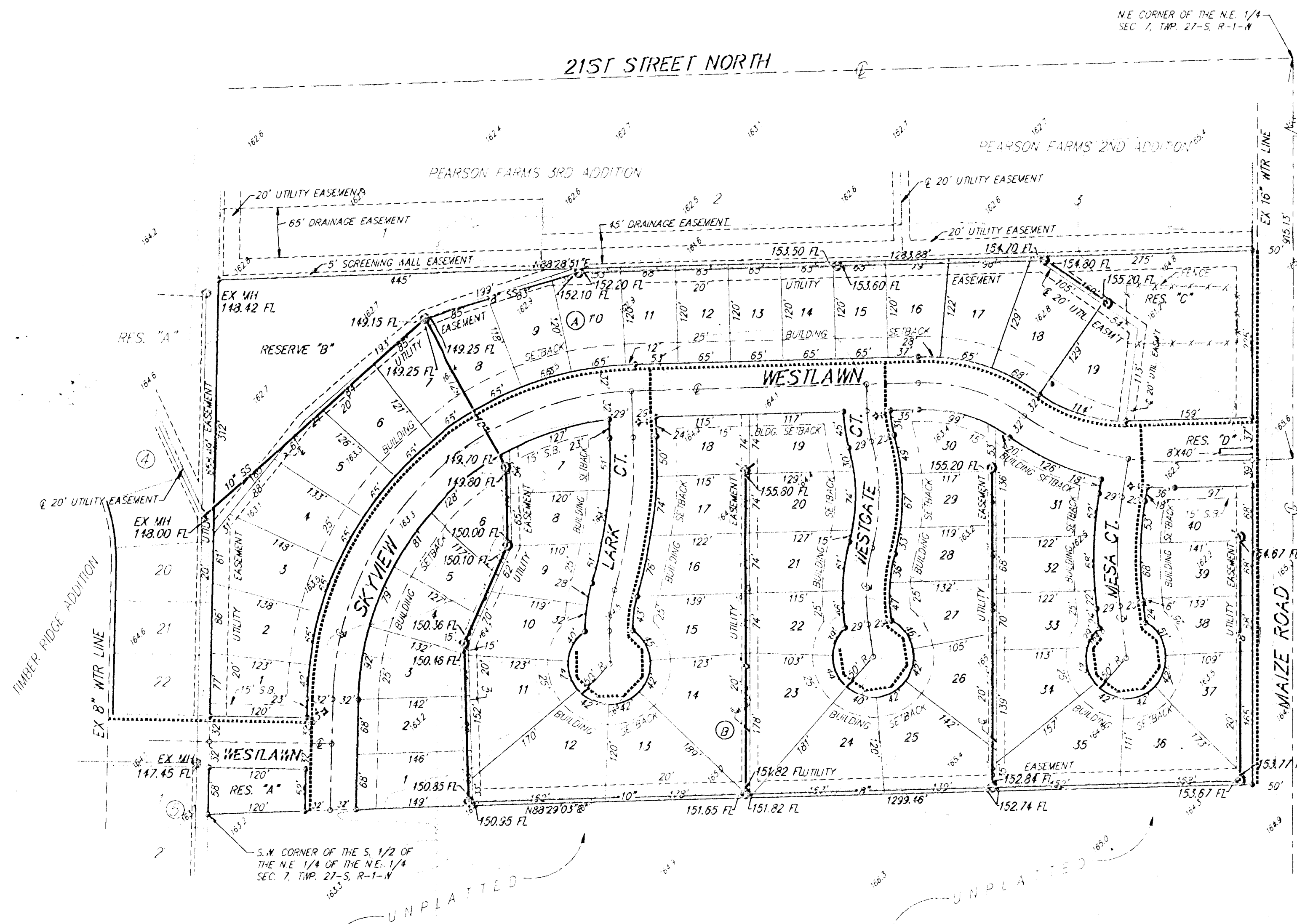
# HEDGEAPPLE ADDITION

WICHITA, SEDGWICK COUNTY, KANSAS

## UTILITY PLAN

### LEGEND

-  Prop. Sanitary Swr.
-  Exist. Sanitary Swr.
-  Proposed Water Line
-  Existing Water Line



LEGAL  
 THE S 1/2 OF THE NE 1/4 OF THE  
 NE 1/4 OF SEC. 7, TWP. 27-S, R-1-W  
 OF THE 6TH P.M., SEDGWICK COUNTY,  
 KANSAS, EXCEPT THE EAST 50 FEET  
 THEREOF FOR ROAD.

OWNER:  
 KELSEY INVESTMENTS  
 ATTN: PAUL KELSEY  
 11535 14TH ST. NO. CIR.  
 WICHITA, KANSAS 67212  
 PH: (316)729-8278

BENCHMARKS  
 CITY STANDARD DISC 84" E  
 & 99" S. OF @ OF 21ST ST. NO.  
 & MAIZE RD.  
 ELEV.=164.50 (CITY DATUM)  
 1351.70 (MSL)

"□" CUT ON TOP OF CURB N.  
 SIDE OF WESTLAWN, 15' W OF  
 S.W. CORNER OF LOT 19, BLK. 1,  
 TIMBER RIDGE ADDITION  
 ELEV.=163.25 (CITY DATUM)  
 1351.25 (MSL)