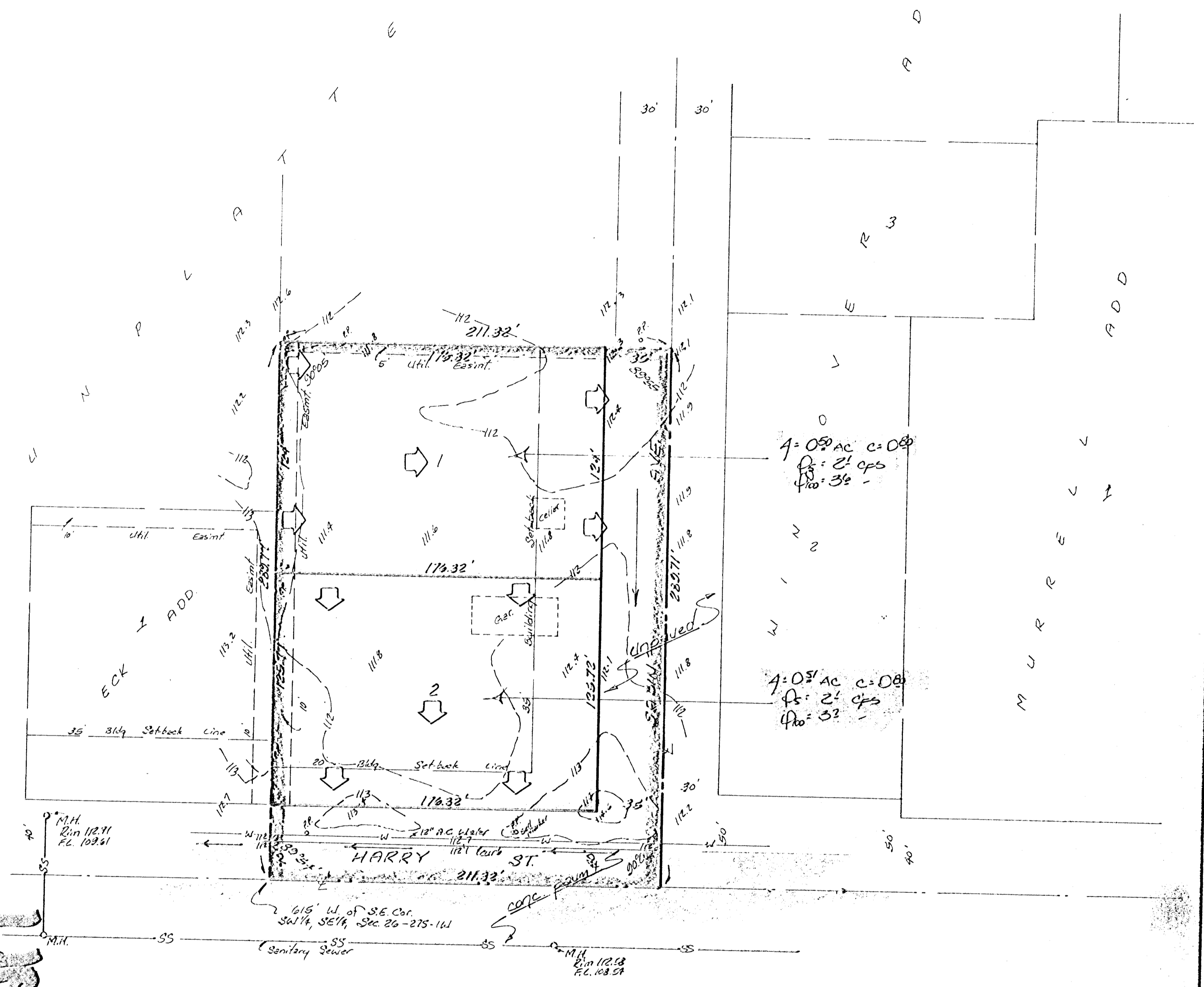


drainage plan



SKETCH PLAT
HECOX 3RD. ADDITION

The west 211.32 feet of the east 615 feet of the SW 1/4 of the SE 1/4 of Sec. 26, Twp. 27-S, R. 1-W of the 6th P.M., Sedgewick County, Kansas, except the north 1030.6 feet thereof.

EILEEN & RAYMOND E. FORD

