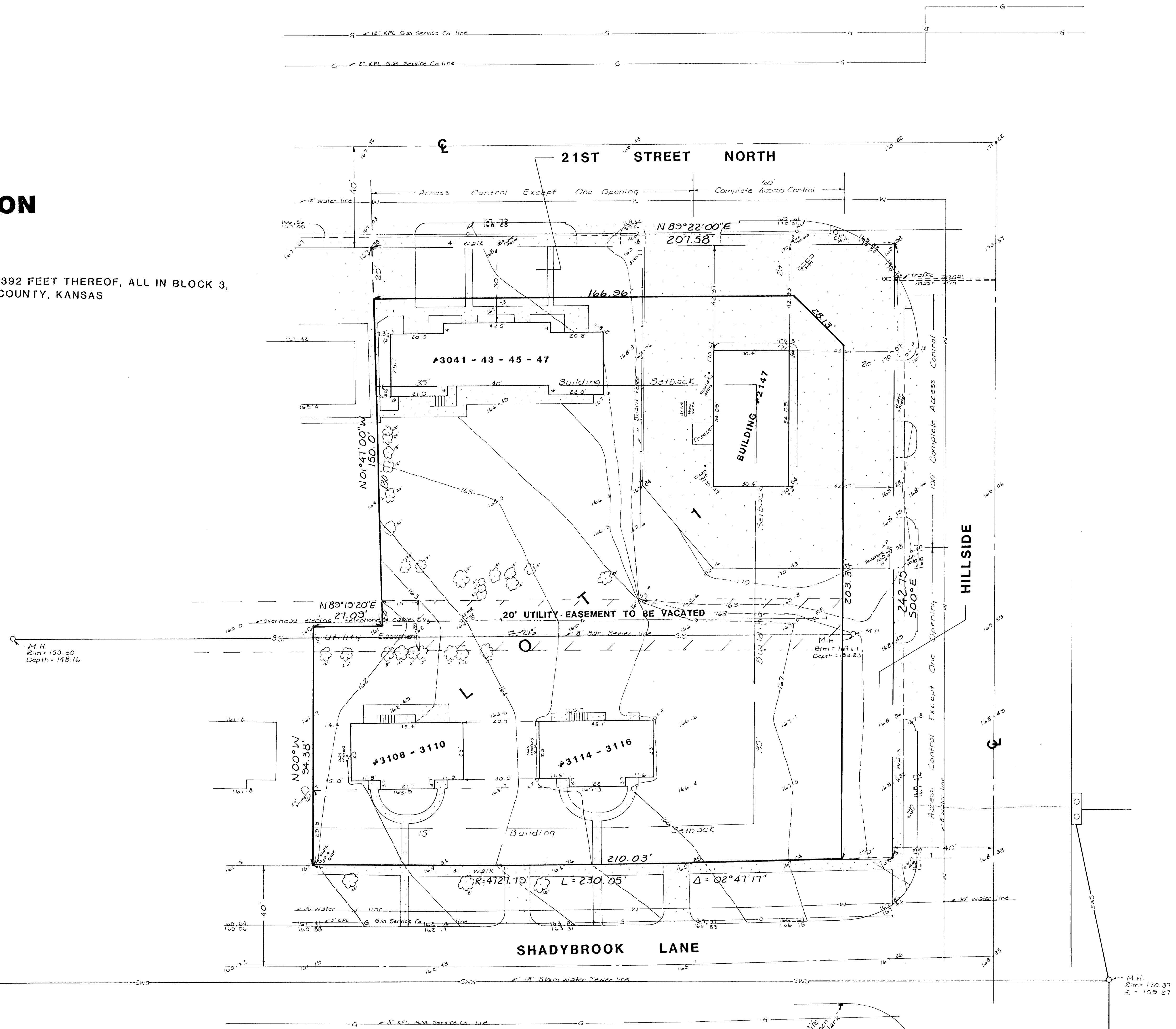


SKETCH PLAT

**QUIKTRIP 5TH ADDITION**

LOTS 1, 2, AND THE RESERVE EXCEPT THE WEST 392 FEET THEREOF, ALL IN BLOCK 3, SHADYBROOK ADDITION TO WICHITA, SEDGWICK COUNTY, KANSAS

OWNERS: JULIUS SMITH  
SAM LUINTRA  
LEE LUINTRA  
O,NIEL DAVIS



Bench Mark  
"B" cut on top of curb South  
side of Shadybrook + Hillside,  
at end of return.  
Elev. = 167.23 City Datum

M.H.  
Rim = 157.75  
L = 150.42

M.H.  
Rim = 170.37  
L = 159.27