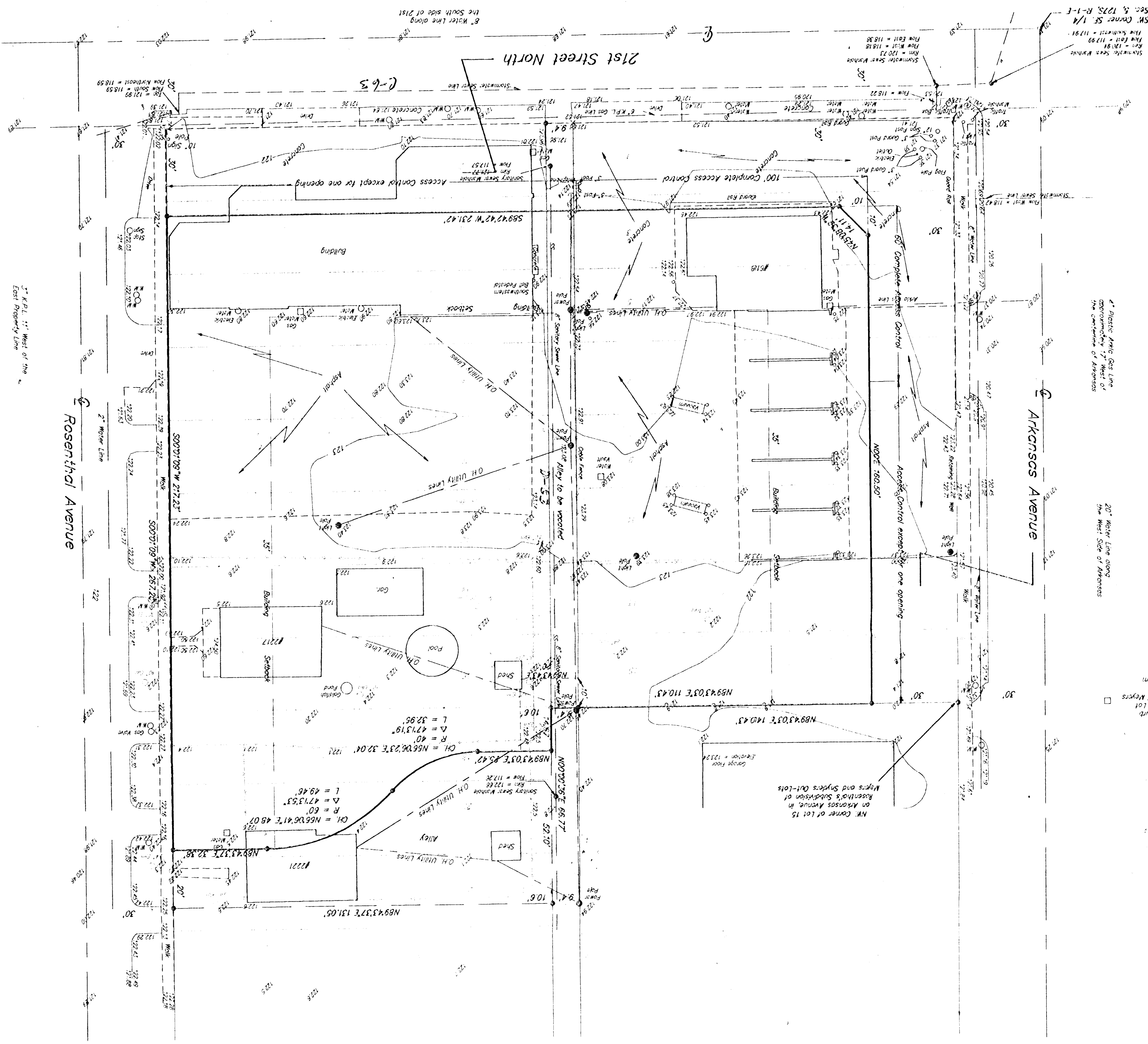
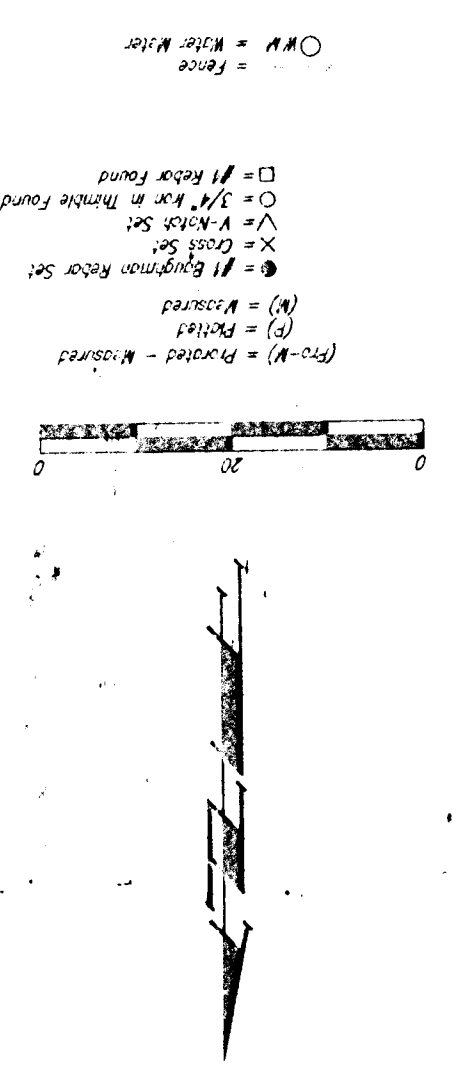


Sketch Plat QUIKTRIP 6TH ADDITION Wichita, Sedgwick County, Kansas



NW Corner SE 1/4 Sec. 5, 122S, R-1-E
 20' Water Line along the West Side of Arkansas
 4' Electric Meter Gas Line approximately 7' West of the Centerline of Arkansas
 Benchmark
 Square cut on the Top of Cut
 50' N. of the NE Corner of Lot 15
 15 Rosenthal's Subdivision of Meyers and Snyder's Out-Lots
 Elevation = 121.37 City Datum.
 20' Water Line along the West Side of Arkansas
 NW Corner SE 1/4 Sec. 5, 122S, R-1-E



(P-W) = Paved - Walkways
 (R) = Roadway
 (N) = Natural
 (H) = Highway
 (G) = Gas
 (S) = Sewer
 (W) = Water
 (E) = Electric
 (M) = Meter
 (C) = 1/2" or 3/4" Water Main
 (D) = 1" Water Main
 (O-W) = Fire Main

BENCHMARK: 25th Street North and Arkansas City of Wichita Disc 40' South and 30' West of the centerline of both Elevation = 122.63(City Datum)
LEGAL: All of Lots 1, 3, 5, 7, 9, 11, 13, and 15, on Arkansas Avenue, in Rosenthal's Subdivision of Meyers and Snyder's Out-Lots to Wichita, Sedgwick County, Kansas, and all of Lots 2, 4, 6, 8, 10, 12, 14, 16, 18, 20, and the South 16 2/3 feet of Lot 22, on Rosenthal Avenue, in Rosenthal's Sub-Division of Meyers and Snyder's Out-Lots to Wichita, Kansas, Sedgwick County, Kansas.
OWNER: QuikTrip Corporation
 901 N. Mingo Road
 Tulsa, Oklahoma, 74116
 (918)836-8551

