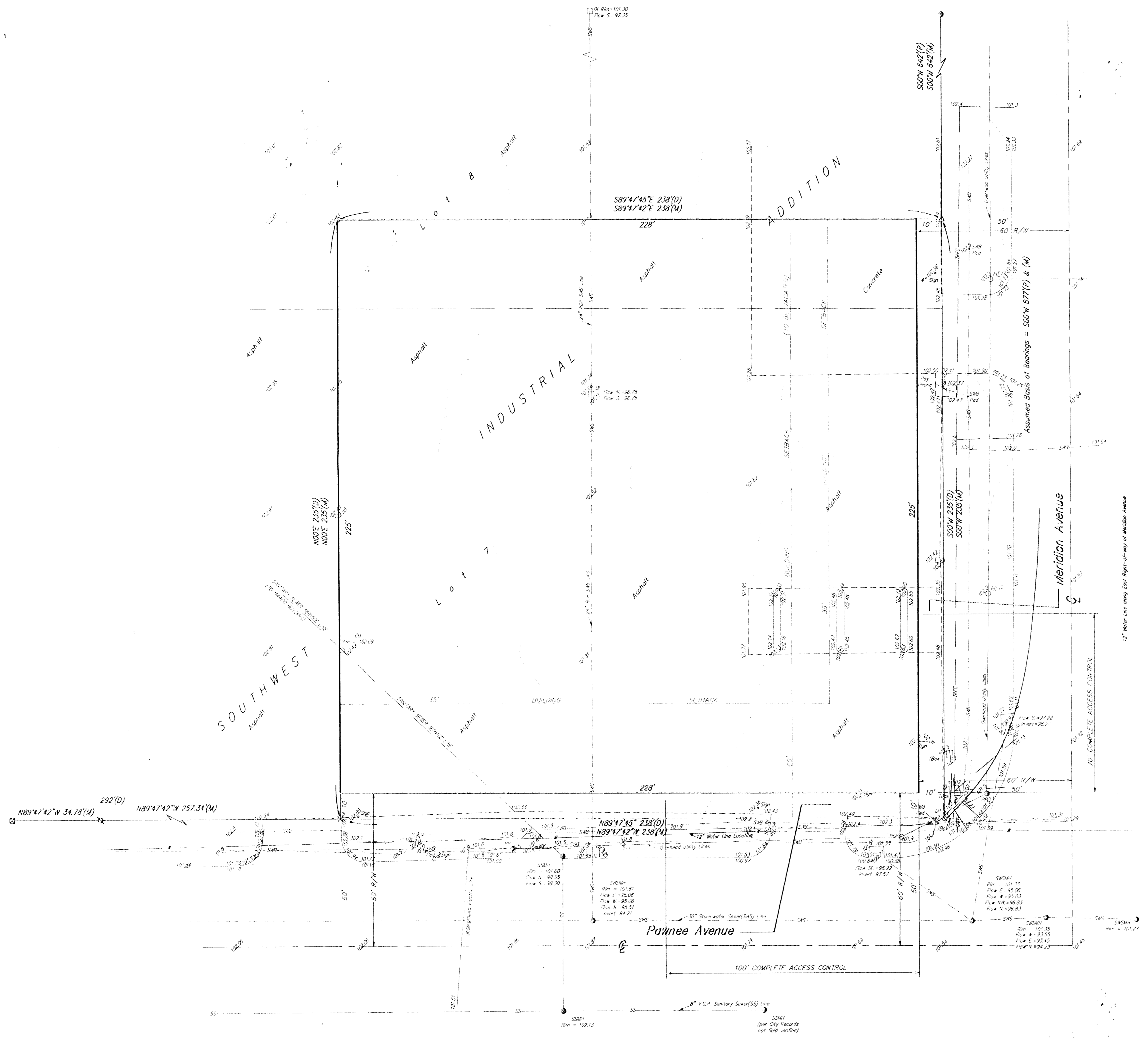


PRELIMINARY PLAT
QUIKTRIP 7TH ADDITION
 WICHITA, SEDGWICK COUNTY, KANSAS



- 0 20 40
- (D) = Described
 (P) = Plotted
 (M) = Measured
- ⊕ = 1/2" Iron Pipe Found
 ⊗ = Chiseled Cross Found
 ⊗ = Chiseled Cross Set
 ○ = P.K. Nail Set
 ⊗ = 3/4" Iron Pipe Found
 Δ = #4 Baughman Rebar Set
- CO = Sanitary Sewer Cleanout
 DI = Drop Inlet
 HLP = High Line Pole
 LP = Light Pole
 PP = Power Pole
 TBox = Traffic Control Box
 SSMH = Sanitary Sewer Manhole
 SWB Ped = Southwestern Bell Pedestal
 SWSMH = Stormwater Sewer Manhole

OWNER:
 BUILDERS, INC.
 ATTN: JIM NUNGESSER
 1081 S. GLENDALE
 WICHITA, KS 67218
 PH. 316-684-1400

CONTRACT PURCHASER:
 QUIKTRIP CORP.
 ATTN: KATH SPIKER
 P.O. BOX 3475
 TULSA, OK
 PH. 918-836-8551

LEGAL DESCRIPTION:
 THE EAST 238 FEET OF LOT 7, TOGETHER
 WITH THE SOUTH 35 FEET OF THE EAST
 238 FEET OF LOT 8, BLOCK 2, SOUTHWEST
 INDUSTRIAL ADDITION, WICHITA, KANSAS.

BENCHMARK:
 MERIDIAN & PAWNEE
 CITY OF WICHITA BENCHMARK DISC - NW COR. OF
 INTERSECTION, TRAFFIC SIGNAL LIGHT BASE.
 71.10' NW OF SEC. COR. IRON,
 9.3' SSW OF Q. OF TRAFFIC SIGNAL MANHOLE
 42.5' SW OF Q. OF CURB INLET
 ELEV. = 102.43 CITY DATUM

