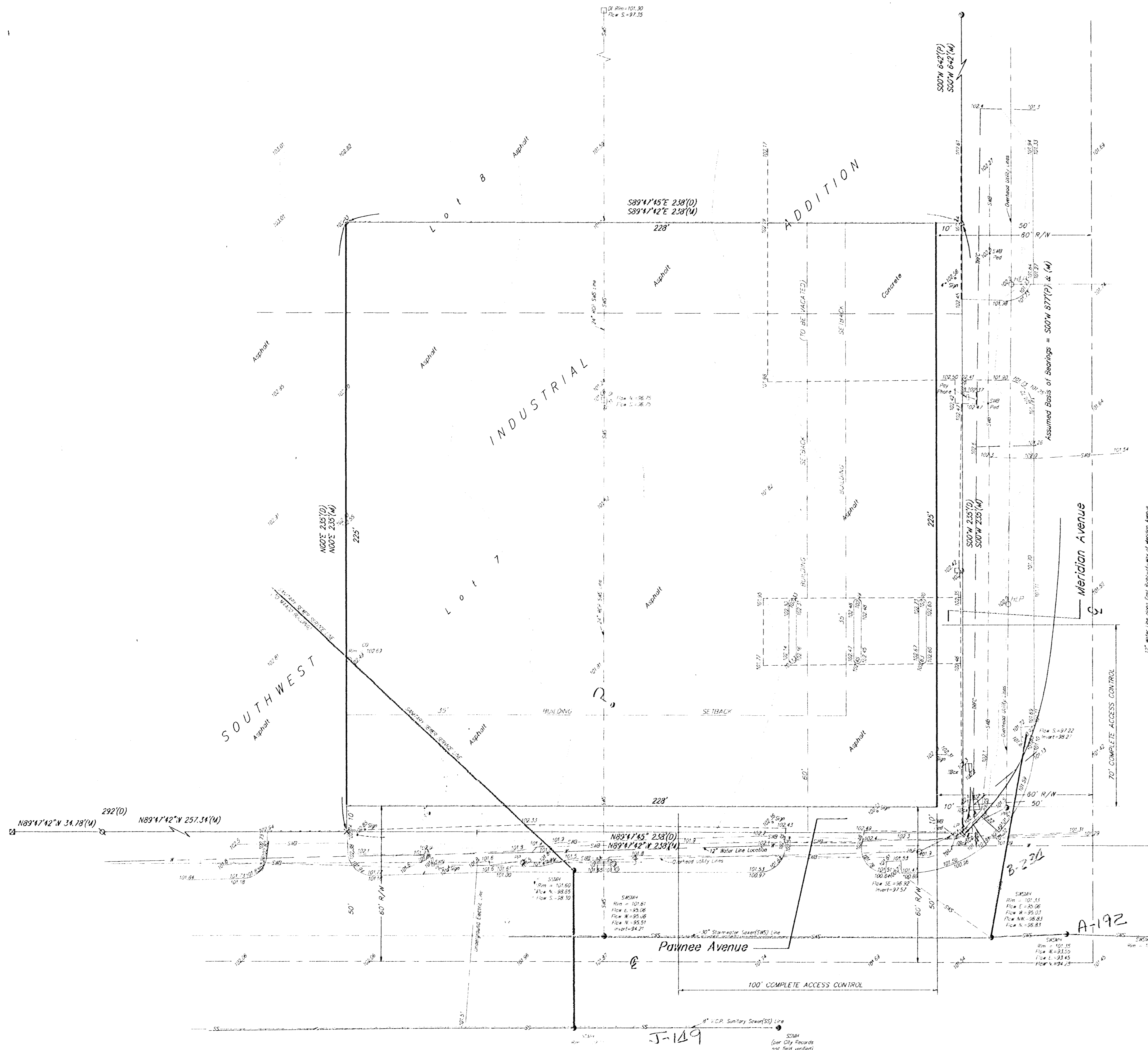


PRELIMINARY PLAT  
**QUIKTRIP 7TH ADDITION**  
 WICHITA, SEDGWICK COUNTY, KANSAS



- 0 20 40
- (D) = Described  
 (P) = Platted  
 (M) = Measured
- ⊙ = 1/2" Iron Pipe Found  
 ⊕ = Chiseled Cross Found  
 × = Chiseled Cross Set  
 ○ = P.K. Nail Set  
 ⊗ = 3/4" Iron Pipe Found  
 Δ = #4 Baughman Rebar Set
- CO = Sanitary Sewer Cleanout  
 DI = Drop Inlet  
 HLP = High Line Pole  
 LP = Light Pole  
 EP = Power Pole  
 TBX = Traffic Control Box  
 SSMH = Sanitary Sewer Manhole  
 SWB Ped = Southwestern Bell Pedestal  
 SWSMH = Stormwater Sewer Manhole

OWNER:  
 BUILDERS, INC.  
 ATTN: JIM NUNGESESSER  
 1081 S. GLENDALE  
 WICHITA, KS 67218  
 PH. 316-684-1400

CONTRACT PURCHASER:  
 QUIKTRIP CORP.  
 ATTN: KEITH SPIKER  
 P.O. BOX 3475  
 TULSA, OK  
 PH. 918-836-8551

LEGAL DESCRIPTION:  
 THE EAST 238 FEET OF LOT 7, TOGETHER  
 WITH THE SOUTH 35 FEET OF THE EAST  
 238 FEET OF LOT 8, BLOCK 2, SOUTHWEST  
 INDUSTRIAL ADDITION, WICHITA, KANSAS.

BENCHMARK:  
 MERIDIAN & PAWNEE  
 CITY OF WICHITA BENCHMARK DISC - NW COR. OF  
 INTERSECTION, TRAFFIC SIGNAL LIGHT BASE,  
 71.10' NW. OF SEC. COR. IRON,  
 9.3' SSW. OF Q. OF TRAFFIC SIGNAL MANHOLE  
 42.5' SW. OF Q. OF CURB INLET  
 ELEV. = 102.43 CITY DATUM

