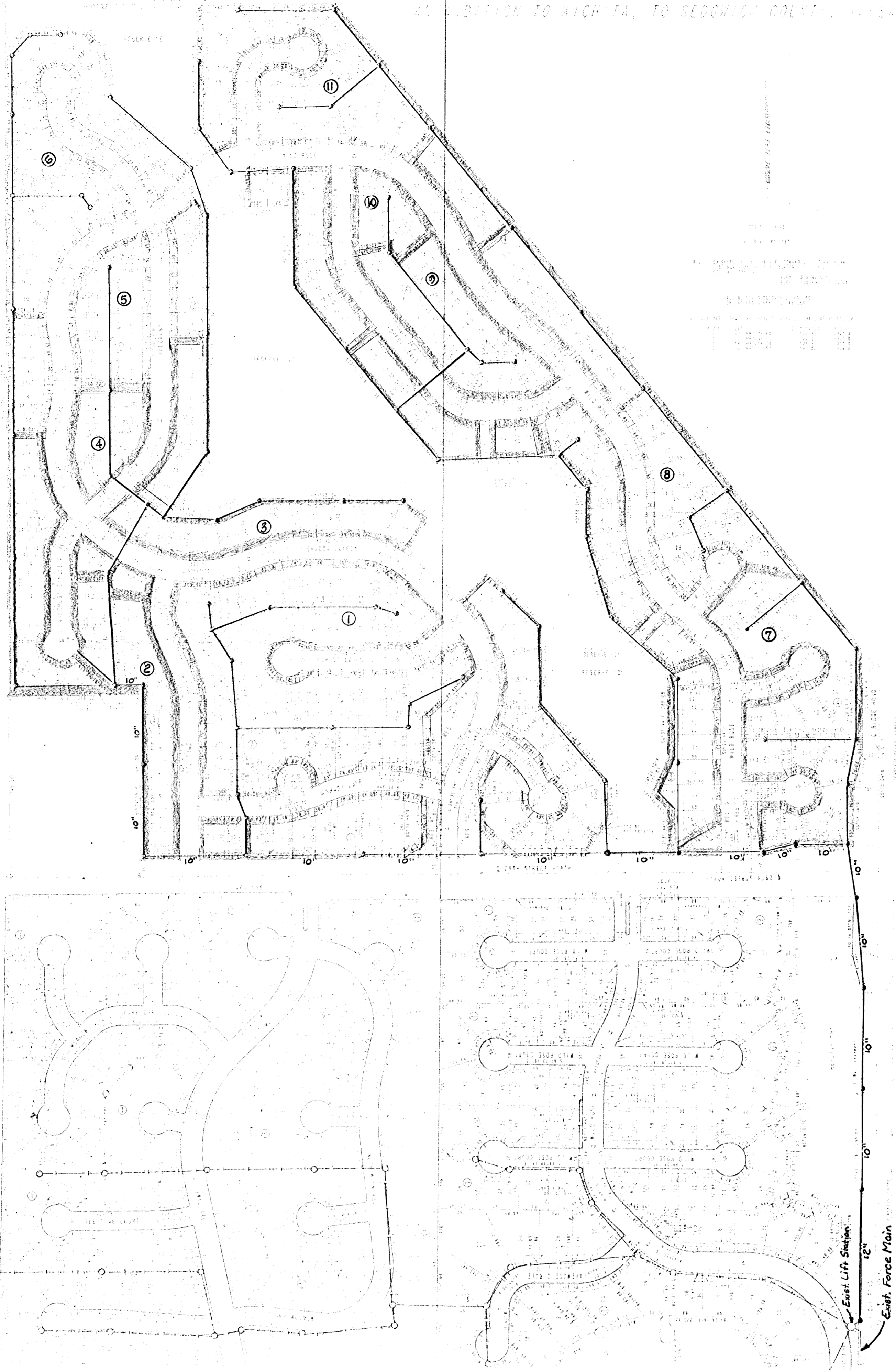


FOREST LAKES  
AS SUBDIVISION TO WICHITA, TO SEDGWICK COUNTY, KANSAS



122  
118.00

FOREST LAKES  
AS SUBDIVISION TO WICHITA, TO SEDGWICK COUNTY, KANSAS

PLANS REVIEWED  
FIRE PREVENTION BUREAU  
CITY OF WICHITA  
DATE FEB 05 1983 BY *[Signature]*

WATER PHASE MAP

