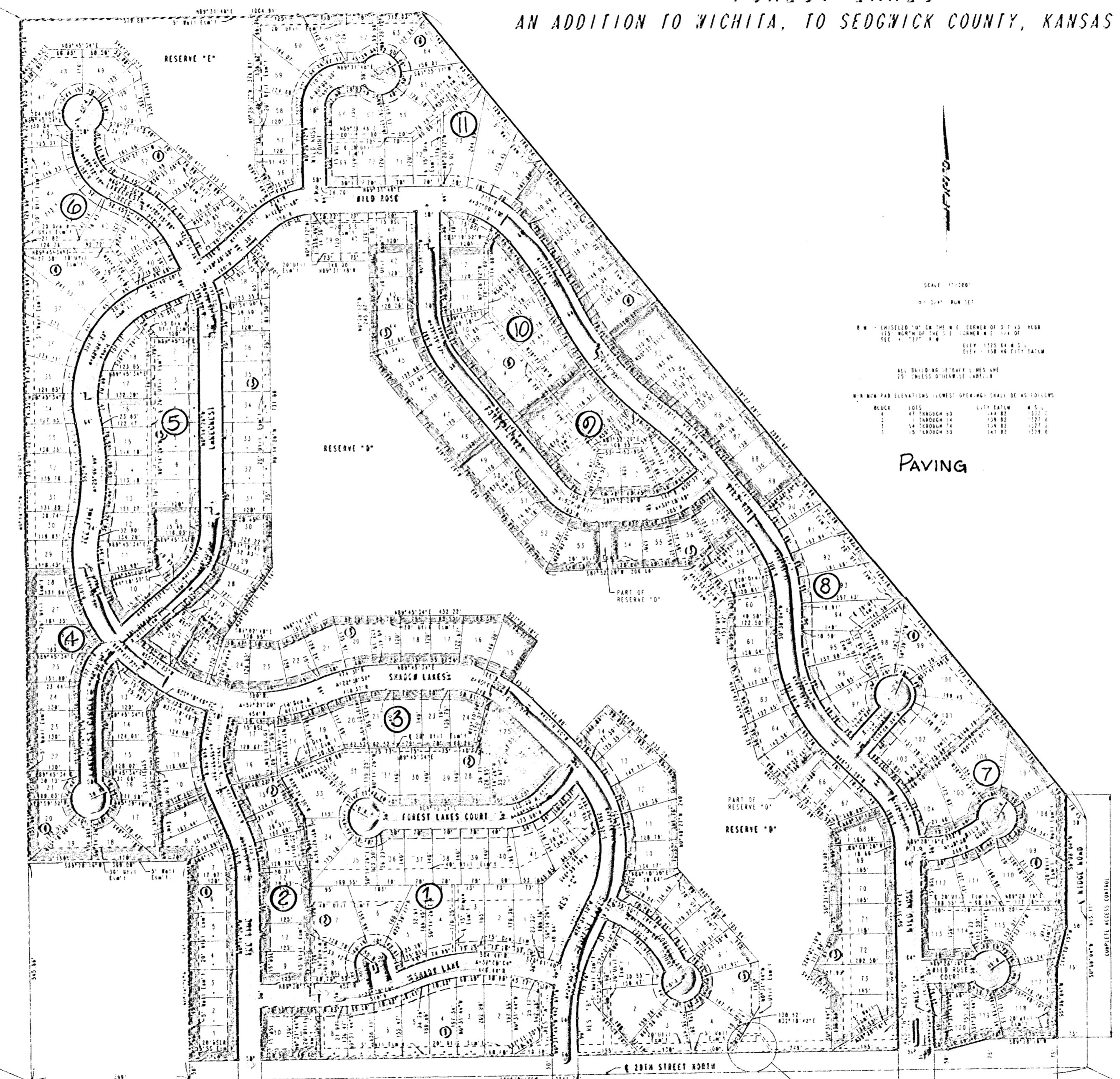


FOREST LAKES
AN ADDITION TO WICHITA, TO SEDGWICK COUNTY, KANSAS

H. W. COOPER, S. E.
CITY ENGINEER
OF WICHITA, KANSAS



SCALE 1"=100'
1"=32.81 FT.

RESERVE "A" - 100' WIDE
RESERVE "B" - 100' WIDE
RESERVE "C" - 100' WIDE

ALL LOTS TO BE PAVED WITH ASPHALT
AND TO BE GRADED TO THE CITY MAIN
DRAINAGE SYSTEM.

BLOCK	100'	150'	200'	250'	300'
1	100	150	200	250	300
2	100	150	200	250	300
3	100	150	200	250	300
4	100	150	200	250	300
5	100	150	200	250	300
6	100	150	200	250	300
7	100	150	200	250	300
8	100	150	200	250	300
9	100	150	200	250	300
10	100	150	200	250	300
11	100	150	200	250	300
12	100	150	200	250	300
13	100	150	200	250	300
14	100	150	200	250	300
15	100	150	200	250	300

PAVING

H. W. COOPER, S. E.
CITY ENGINEER
OF WICHITA, KANSAS

H. W. COOPER, S. E.
CITY ENGINEER
OF WICHITA, KANSAS

