

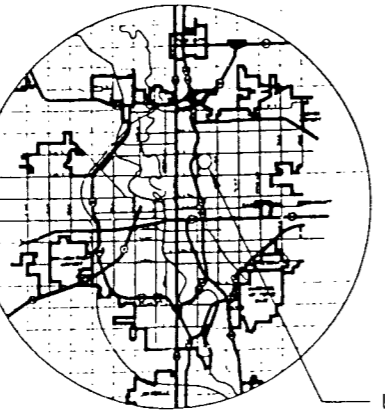
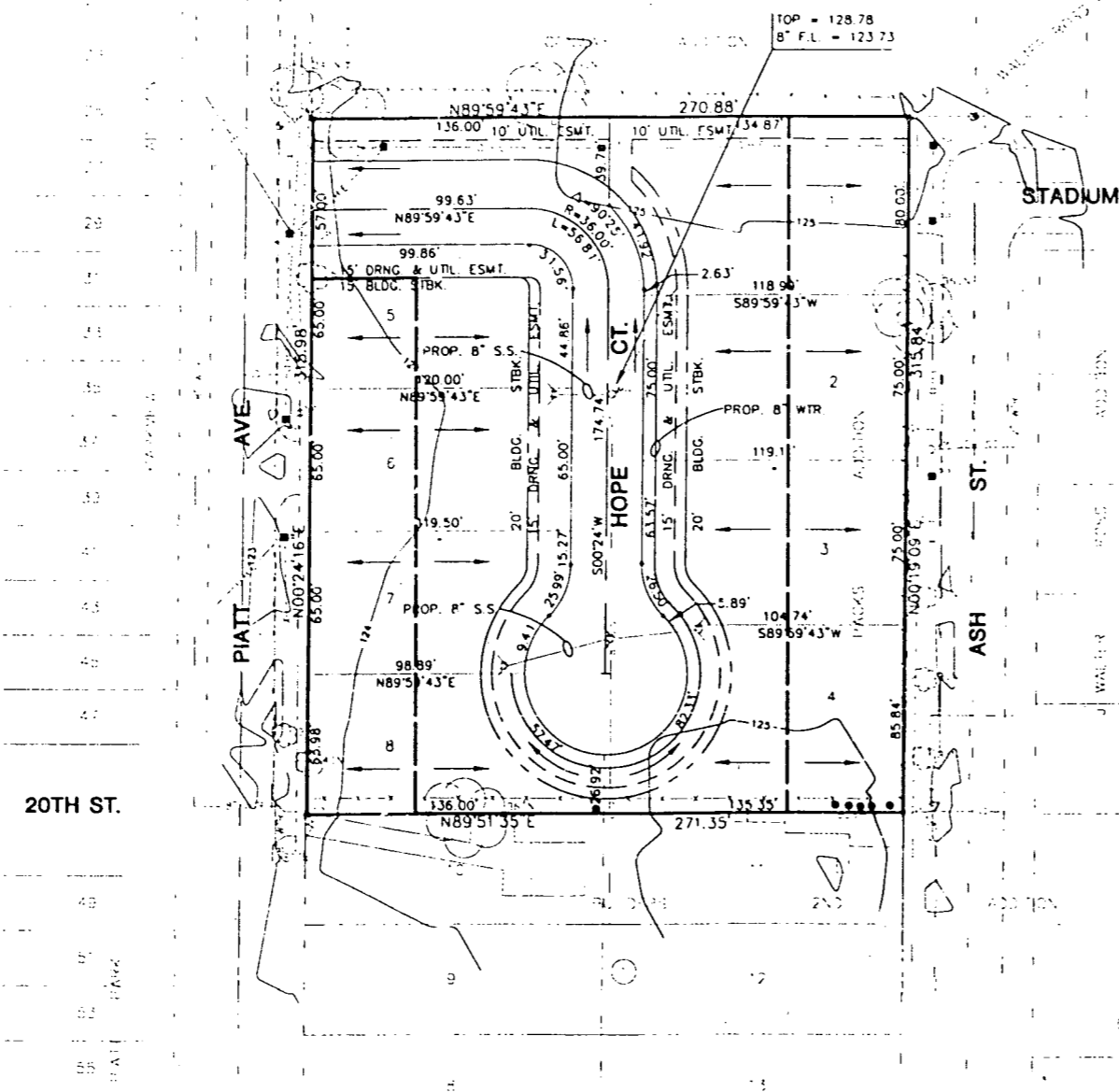
21ST ST.

BM #1

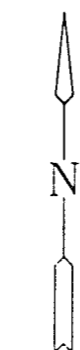
FINAL PLAT

POWER C.D.C. ADDITION

AN ADDITION TO WICHITA, SEDGWICK COUNTY, KANSAS



LOCATION MAP



SCALE: 1" = 40'
Date: 6/6/96
Survey:
MKEC 4/96

ZONING
EXISTING - B

BENCHMARKS

BM #1: 1" CUT ON SOUTH END OF S.W. CURB RETURN AT 21ST & MADISON.
ELEV. = 126.30

I, Kenneth H. Bengtson, a Civil Engineer and Registered Land Surveyor in Kansas, do hereby certify that I have been in responsible charge of surveying and plotting of POWER C.D.C. ADDITION, an addition to Wichita, Sedgwick County, Kansas, into lots, and a block, the same being accurately set forth in the accompanying plat and described herein:

A replat of Lot 1, Pac's Addition to Wichita, Kansas, Sedgwick County, Kansas.

All lots, blocks, streets, building setbacks, and easements within described property are hereby vacated and replatted by virtue of K.S.A. 12-512(b).

I hereby certify that the details of this plat are correct to the best of my knowledge and belief this _____ day of _____ 1996.

Kenneth H. Bengtson, P.E., R.L.S. #922
Mid-Kansas Engineering Consultants, Inc.
411 North Webb Road
Wichita, KS 67206

Know all men by these presents that we the undersigned property owners of the land as above set forth in the Civil Engineer's and Registered Land Surveyor's Certificate, have caused the same to be surveyed and plotted into lots, and a block, the same to be known as POWER C.D.C. ADDITION, an addition to Wichita, Sedgwick County, Kansas. Easements for the construction and maintenance of public utilities and drainage, are hereby granted to the public

Neighborhood Developments, L.C., a Kansas limited liability company.

STATE OF KANSAS)
) ss:
SEDGWICK COUNTY)

BE IT REMEMBERED, that on this _____ day of _____ 1996, before me the undersigned, a Notary Public in and for the County and State aforesaid, came _____ to me personally known to be the same person who executed the foregoing instrument of writing and duly acknowledged the execution of the same.

IN WITNESS WHEREOF, I have hereunto set my hand and affixed my official seal, the day and year last above written.

Notary Public _____

My appointment expires: _____

This plat of POWER C.D.C. ADDITION, has been submitted to and approved by the Wichita-Sedgwick County Metropolitan Area Planning Commission, Wichita, Kansas.

Dated this _____ day of _____, 1996.

WICHITA-SEDGWICK COUNTY METROPOLITAN PLANNING COMMISSION

Susan Osborne-Hoewer, Chairman

Marvin S. Kraul, Secretary

This plat approved and all dedications shown thereon, if any, accepted by the City Council of the City of Wichita, Kansas, this _____ day of _____, 1996.

Bib Knight, Mayor

Pat Burnell, Deputy City Clerk

Entered on transfer record this _____ day of _____, 1996.

Susan E. Crockett-Soon, County Clerk

STATE OF KANSAS)
) ss:
SEDGWICK COUNTY)

This is to certify that this instrument was filed for record in the Register of Deeds office this _____ day of _____, 1996.

Pat Kettler, Register of Deeds

Ed Reso, Deputy

(DRAINAGE AND UTILITY PLAN)



OWNER NEIGHBOR DEVELOPMENTS, L.C.
A KANSAS LIMITED LIABILITY COMPANY
C/O MENNONITE HOUSING REHAB SERV. INC.
THOMAS A. BISHOP, PRESIDENT/CEO
3035 W. 2ND STREET
WICHITA, KANSAS 67203

MID-KANSAS ENGINEERING
CONSULTANTS, INC.
411 N. WEBB ROAD
WICHITA, KS 67206

DESIGN BY: _____ DATE: _____
CHECKED BY: _____ DATE: _____