

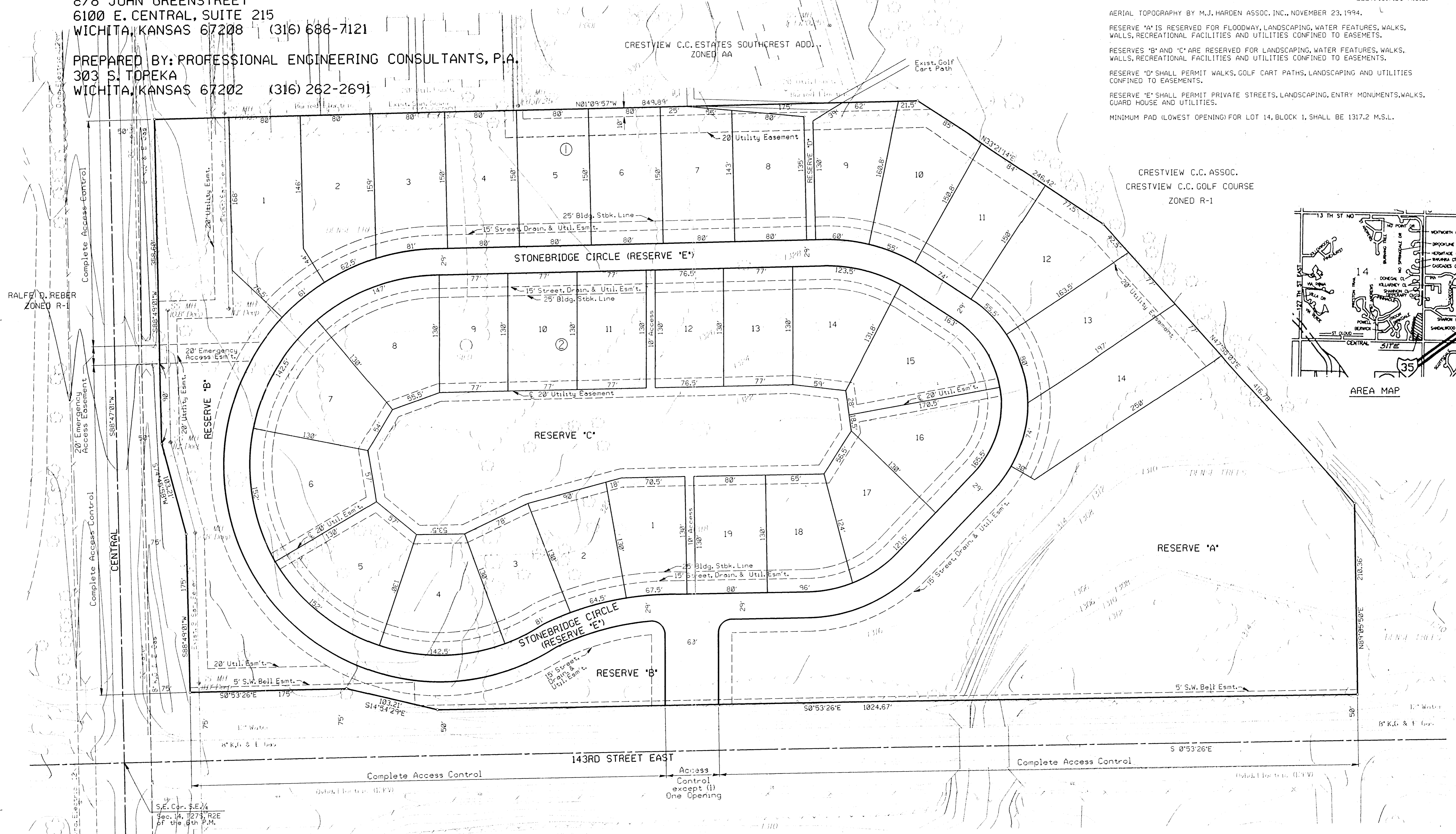
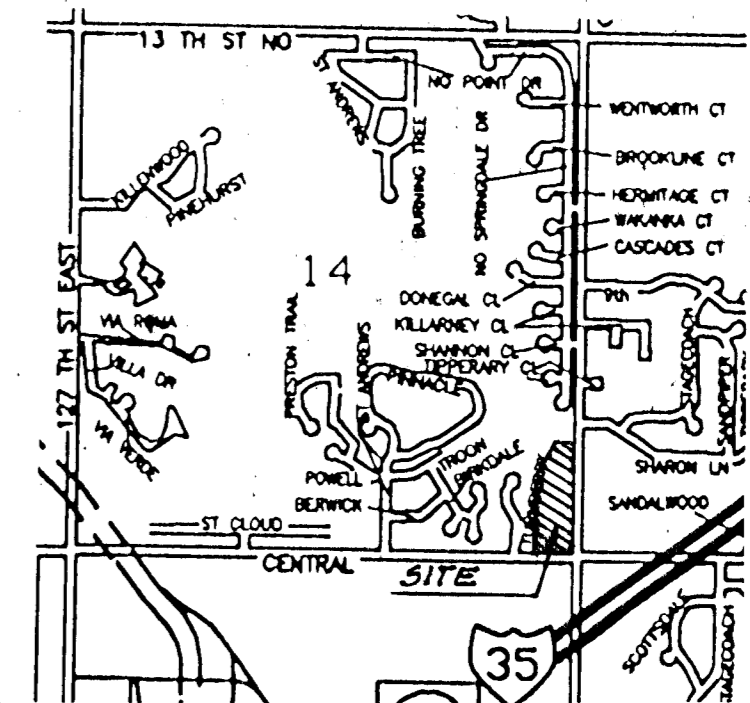
PRELIMINARY PLAT
STONEBRIDGE
 PREPARED FOR: P.D.S. DEVELOPMENT COMPANY INC.
 c/o JOHN GREENSTREET
 6100 E. CENTRAL, SUITE 215
 WICHITA, KANSAS 67208 (316) 686-7121

PREPARED BY: PROFESSIONAL ENGINEERING CONSULTANTS, P.A.
 303 S. TOPEKA
 WICHITA, KANSAS 67202 (316) 262-2691

SCALE: 1"=50'
 JANUARY 13, 1995
 BENCH MARK: CHISELED " ON TOP OF SOUTH END OF GUARD RAIL ON WEST SIDE OF
 143RD ST. R.C.B., NORTH OF CENTRAL. ELEV. 1317.03' M.S.L.

AERIAL TOPOGRAPHY BY M.J. HARDEN ASSOC. INC., NOVEMBER 23, 1994.
 RESERVE 'A' IS RESERVED FOR FLOODWAY, LANDSCAPING, WATER FEATURES, WALKS, WALLS, RECREATIONAL FACILITIES AND UTILITIES CONFINED TO EASEMENTS.
 RESERVES 'B' AND 'C' ARE RESERVED FOR LANDSCAPING, WATER FEATURES, WALKS, WALLS, RECREATIONAL FACILITIES AND UTILITIES CONFINED TO EASEMENTS.
 RESERVE 'D' SHALL PERMIT WALKS, GOLF CART PATHS, LANDSCAPING AND UTILITIES CONFINED TO EASEMENTS.
 RESERVE 'E' SHALL PERMIT PRIVATE STREETS, LANDSCAPING, ENTRY MONUMENTS, WALKS, GUARD HOUSE AND UTILITIES.
 MINIMUM PAD (LOWEST OPENING) FOR LOT 14, BLOCK 1, SHALL BE 1317.2 M.S.L.

CRESTVIEW C.C. ASSOC.
 CRESTVIEW C.C. GOLF COURSE
 ZONED R-1



usr:\usr\dmr\94746\prelimadgn
 date plotted: 1/19/95
 deliver to: sarahcz

S.E. Cor. S.E. 24
 Sec. 14, T274, R2E
 of the 6th P.M.

CRESTVIEW C.C. ESTATES
 OVERBROOK ADDITION
 ZONED AA