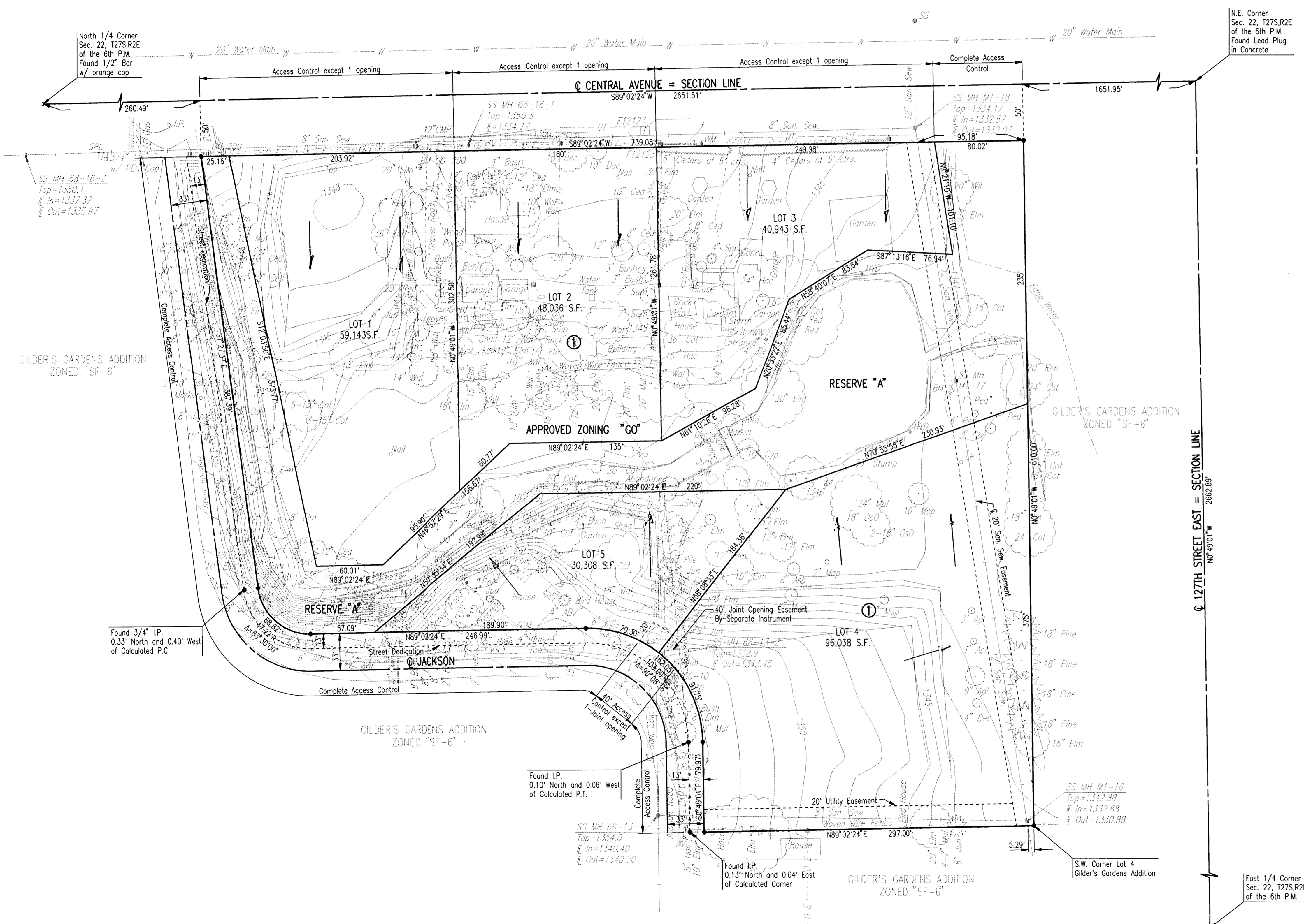


PRELIMINARY PLAT OF
PLAZA CENTRAL OFFICE PARK
 AN ADDITION TO WICHITA, SEDGWICK COUNTY, KANSAS

DRAINAGE CONCEPT

OWNERS: GAIL P. HIGLER
 DUANE L. O'HARA
 CLARENCE B. SHELMAN, JR.
 c/o PDS DEVELOPMENT CO., INC.
 JOHN GREENSTREET
 6100 E. CENTRAL, SUITE 215
 WICHITA, KANSAS 67208

ENGINEER: PROFESSIONAL ENGINEERING CONSULTANTS, P.A.
 303 S. TOPEKA
 WICHITA, KANSAS 67202



SCALE: 1"=50'

JUNE 1998
 TOPOGRAPHY: MAY 1998

B.M. 1: CHISELED "x" ON NORTH RIM SANITARY SEWER MANHOLE,
 260± SOUTH OF CENTRAL, 772± EAST OF JACKSON,
 2ND MANHOLE SOUTH OF CENTRAL.
 ELEV.=1342.77 M.S.L.

RESERVE "A" IS FOR DRAINAGE, LANDSCAPING, OPEN SPACE AND
 UTILITIES CONFINED TO EASEMENTS.
 NOTE: ALL STRUCTURES IN SITE TO BE REMOVED.

DRAINAGE SHALL BE CONVEYED TO
 THE DRAINAGE SYSTEM WITHIN RESERVE "A"
 VIA FLUMES, PRIVATE STORM SEWERS,
 SWALES, OR OTHER APPROVED DRAINAGE
 SYSTEMS.

DSNR: SANCHEZ OPER: DEP SCALE: 1"=50.00
 C:\1998\8815\PRELIM 06-18-1998 09:12:55 am