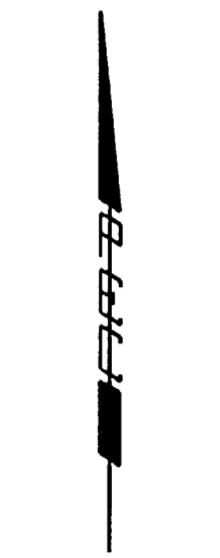
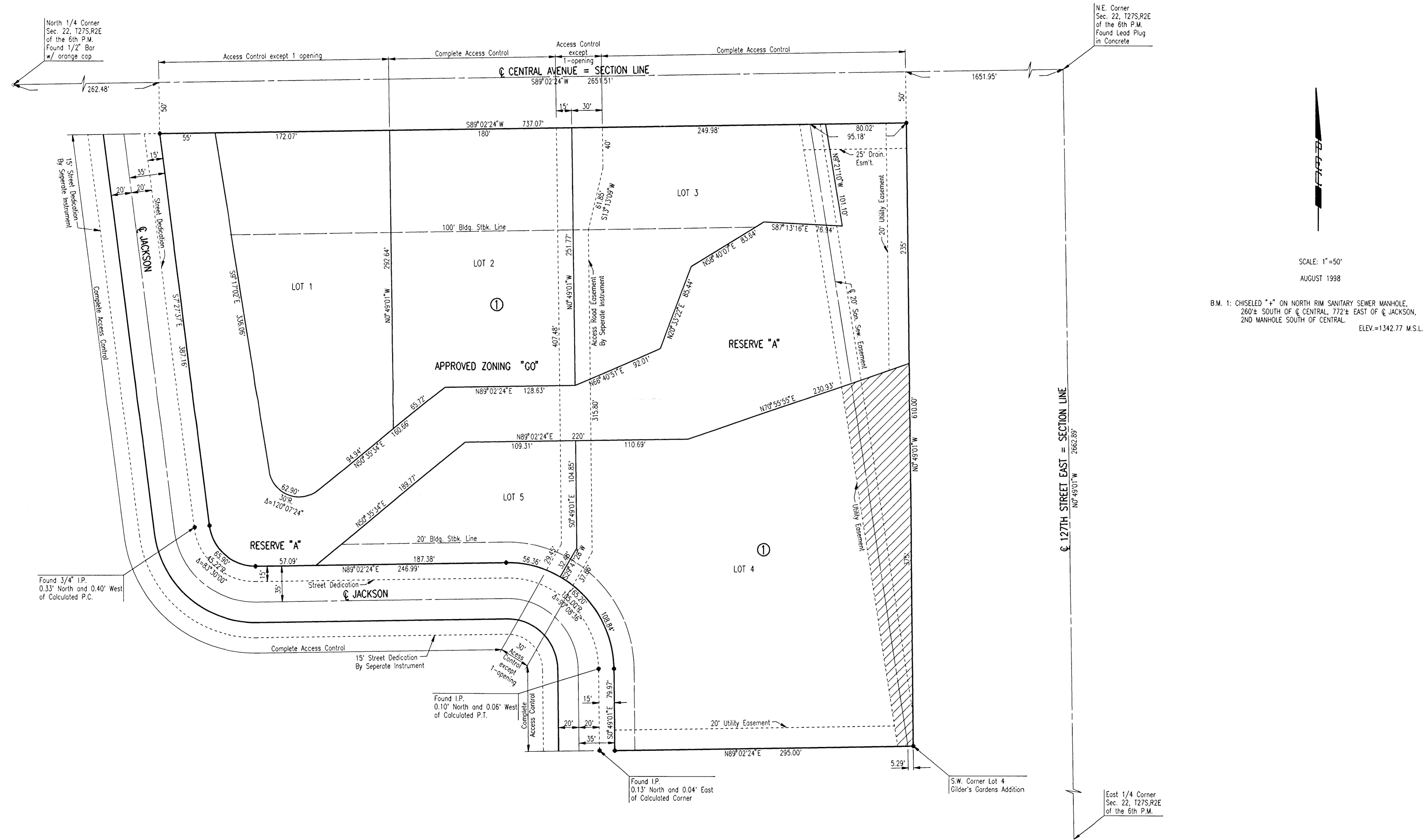


# PLAZA CENTRAL OFFICE PARK

AN ADDITION TO WICHITA, SEDGWICK COUNTY, KANSAS



SCALE: 1"=50'  
AUGUST 1998

B.M. 1: CHISELED "+" ON NORTH RIM SANITARY SEWER MANHOLE,  
260± SOUTH OF @ CENTRAL, 772± EAST OF @ JACKSON,  
2ND MANHOLE SOUTH OF CENTRAL. ELEV.=1342.77 M.S.L.

North 1/4 Corner  
Sec. 22, T27S,R2E  
of the 6th P.M.  
Found 1/2" Bar  
w/ orange cap

N.E. Corner  
Sec. 22, T27S,R2E  
of the 6th P.M.  
Found Lead Plug  
in Concrete

Found 3/4" I.P.  
0.33' North and 0.40' West  
of Calculated P.C.

Found I.P.  
0.10' North and 0.06' West  
of Calculated P.T.

Found I.P.  
0.13' North and 0.04' East  
of Calculated Corner

S.W. Corner Lot 4  
Gilder's Gardens Addition

East 1/4 Corner  
Sec. 22, T27S,R2E  
of the 6th P.M.

DSNR: SANCHEZ OPER. DEP SCALE: 1"=50.00  
0:\1998\98157\FINAL\_08-14-1998\_04:43:54 pm