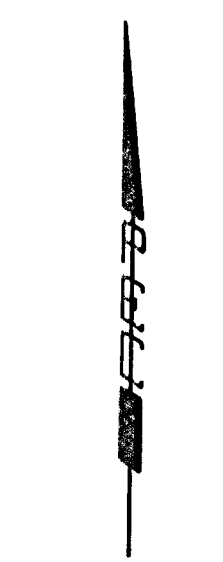
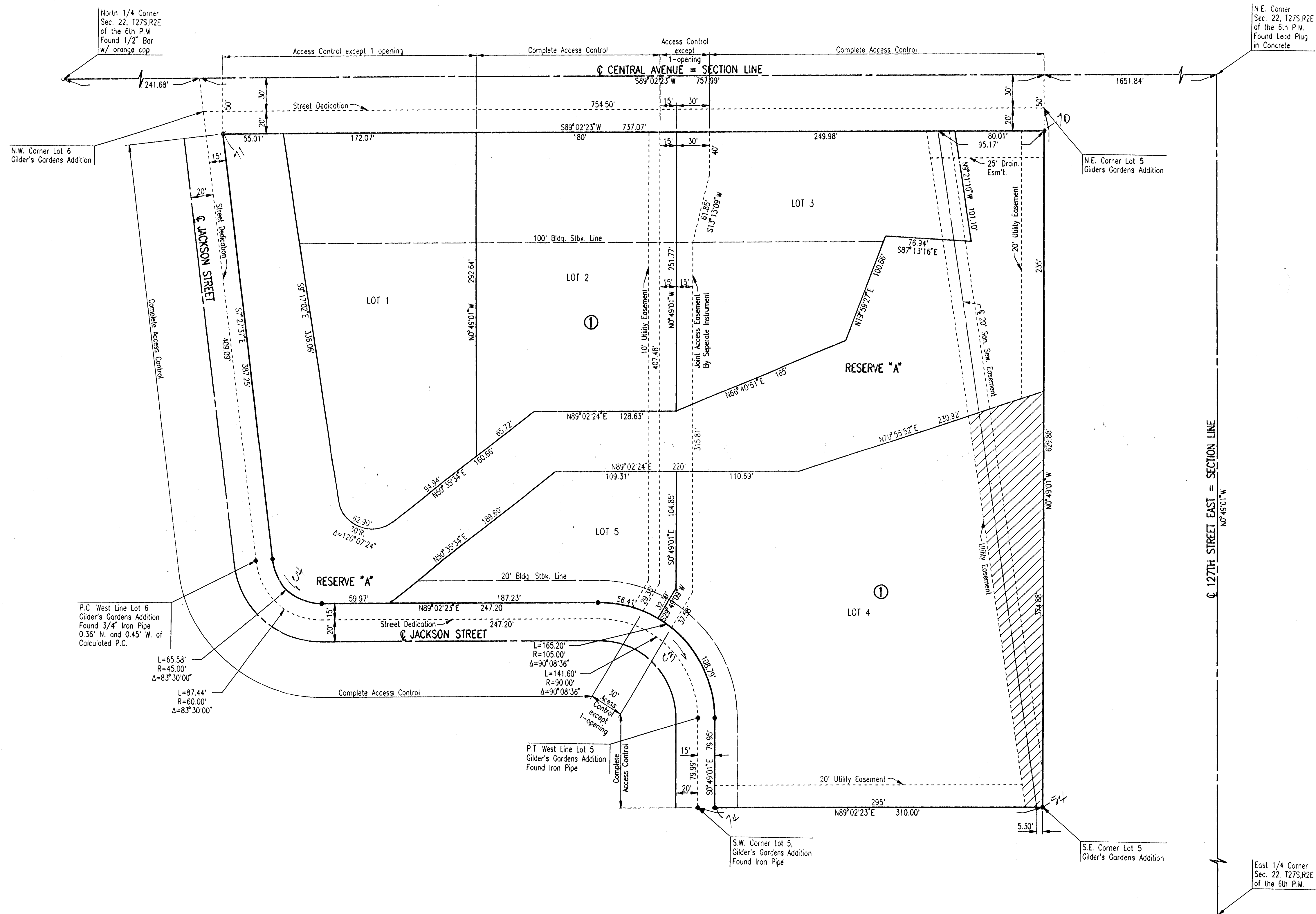


PLAZA CENTRAL OFFICE PARK

AN ADDITION TO WICHITA, SEDGWICK COUNTY, KANSAS



SCALE: 1"=50'
AUGUST 1998
● = IRON SET

B.M. 1: CHISELED "+" ON NORTH RIM SANITARY SEWER MANHOLE,
260'± SOUTH OF @ CENTRAL, 712'± EAST OF @ JACKSON,
2ND MANHOLE SOUTH OF CENTRAL.
ELEV.=1342.77 M.S.L.

THIS ADDITION IS SUBJECT TO THE CONDITIONS OF THE PROTECTIVE OVERLAY DISTRICT #33.

ESTABLISHED MINIMUM PAD (LOWEST OPENING) AS FOLLOWS:

- BLOCK 1
- LOTS 1, 2 AND 5, = 158.6 CITY DATUM = 1346.0 M.S.L.
- LOT 3 = 157.6 CITY DATUM = 1345.0 M.S.L.
- LOT 4 = 157.1 CITY DATUM = 1344.5 M.S.L.

DSNR: SANCHEZ OPER: DEP: SCALE: 1"=50.00
C:\1998\08157\FINAL_01-27-1999 10:54:29 am