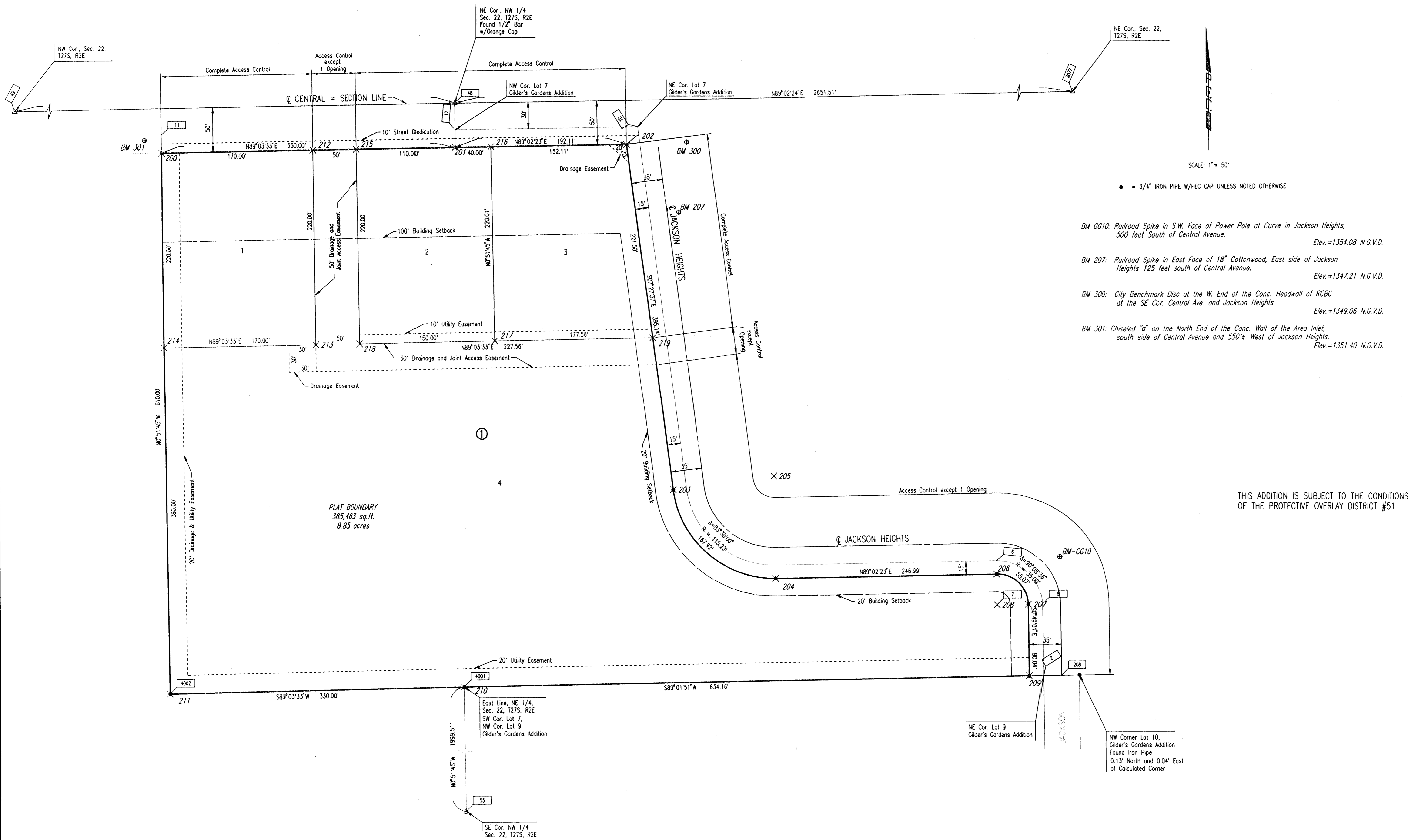


PLAZA CENTRAL OFFICE PARK 2ND ADDITION

TO WICHITA, SEDGWICK COUNTY, KANSAS



- = 3/4" IRON PIPE W/PEC CAP UNLESS NOTED OTHERWISE
- BM GG10: Railroad Spike in S.W. Face of Power Pole at Curve in Jackson Heights, 500 feet South of Central Avenue. Elev.=1354.08 N.G.V.D.
- BM 207: Railroad Spike in East Face of 18" Cottonwood, East side of Jackson Heights 125 feet south of Central Avenue. Elev.=1347.21 N.G.V.D.
- BM 300: City Benchmark Disc at the W. End of the Conc. Headwall of RCBC at the SE Cor. Central Ave. and Jackson Heights. Elev.=1349.06 N.G.V.D.
- BM 301: Chiseled "a" on the North End of the Conc. Wall of the Area Inlet, south side of Central Avenue and 550'± West of Jackson Heights. Elev.=1351.40 N.G.V.D.

THIS ADDITION IS SUBJECT TO THE CONDITIONS OF THE PROTECTIVE OVERLAY DISTRICT #51