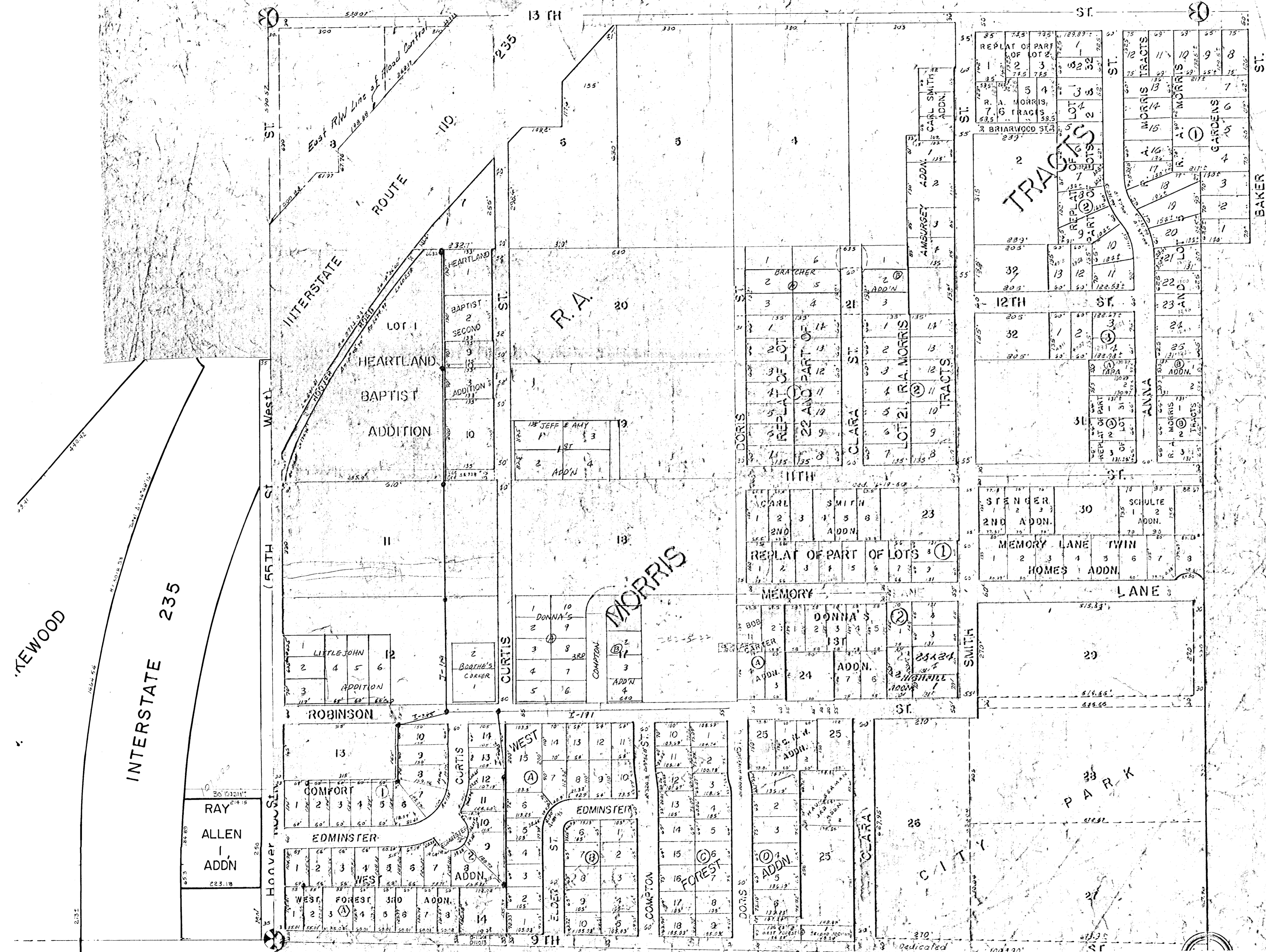


N.W. 1/4 SEC. 14, TWP. 27 S., R. 1 W.



KEWOOD

INTERSTATE 235

RAY ALLEN
1
ADDN

EDMINSTER
1
2
3
4
5
6
7
8
9
10
11
12
13
14
15
16
17
18
19
20
21
22
23
24
25
26

R.A. MORRIS

MORRIS

TRACTS

PARK

CITY

Dedicated