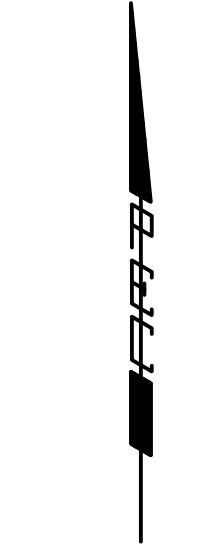
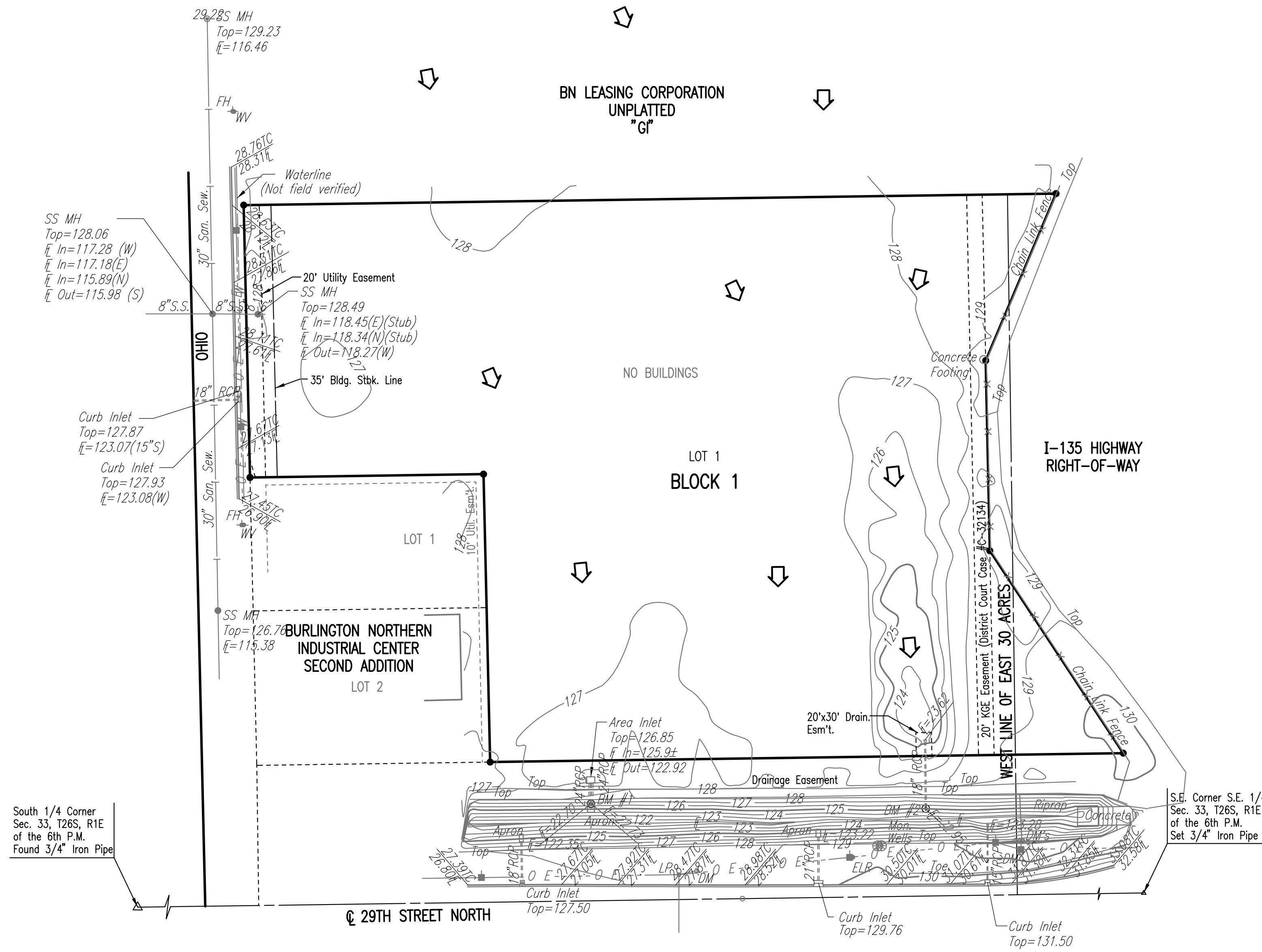


DRAINAGE PLAN
REDBURN 2ND ADDITION
 TO WICHITA, SEDGWICK COUNTY, KANSAS



SCALE: 1"=100'
 ● = 3/4" IRON FOUND

DATUM BENCH MARK: RAILROAD SPIKE EMBEDDED IN CONCRETE HUBGUARD, S.W. CORNER RCBC UNDER OHIO ST. 75± NORTH OF 29TH STREET NORTH. ELEV.=129.61
 BENCH MARK 1: CHISELED "J" IN TOP @ HEADWALL OF OUTFALL OF AREA INLET, EAST OF S.W. PROPERTY CORNER. ELEV.=128.89
 BENCH MARK 2: CHISELED "J" IN TOP OF PIPE OF OUTFALL OF AREA INLET, WEST OF S.E. PROPERTY CORNER. ELEV.=124.73

CITY DATUM USED FOR ALL ELEVATIONS.
 MEAN SEA LEVEL = CITY DATUM + 1187.4
 ALL SOILS ARE SCS HYDROLOGIC SOIL GROUP TYPE 'D'.

LEGEND

➡ STORM WATER FLOW

CONTRIBUTING AREA = 13.86 ACRES
 RUNOFF COEFFICIENT = 0.76
 ASSUMED TIME TO CONCENTRATION = 20 MINUTES
 CONTRIBUTING 5 YEAR FLOWRATE = CIA = 0.76*4.00*13.86=42 CFS

