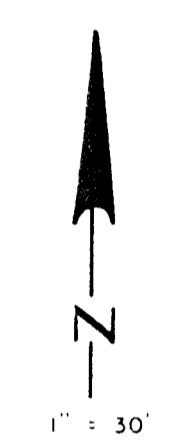
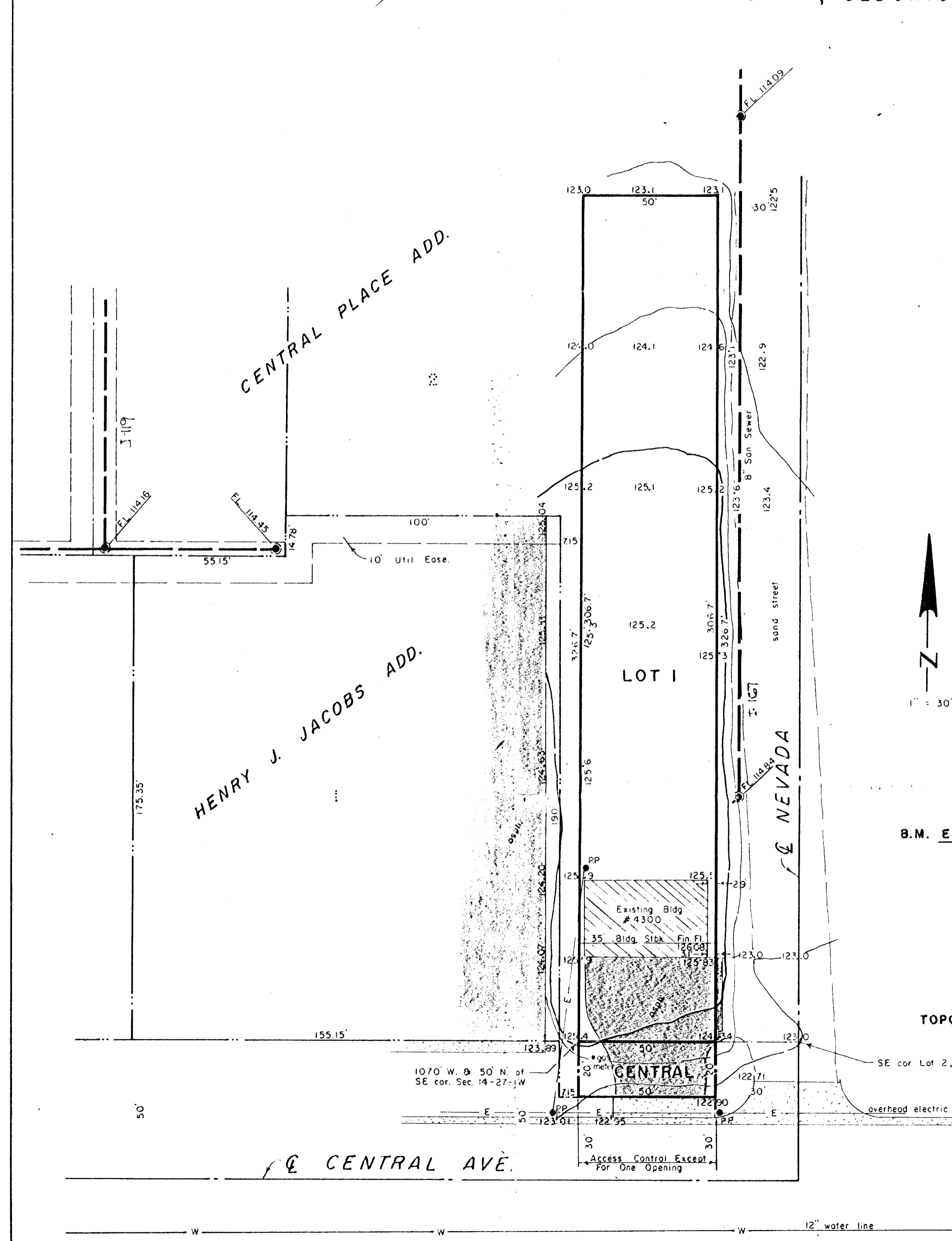
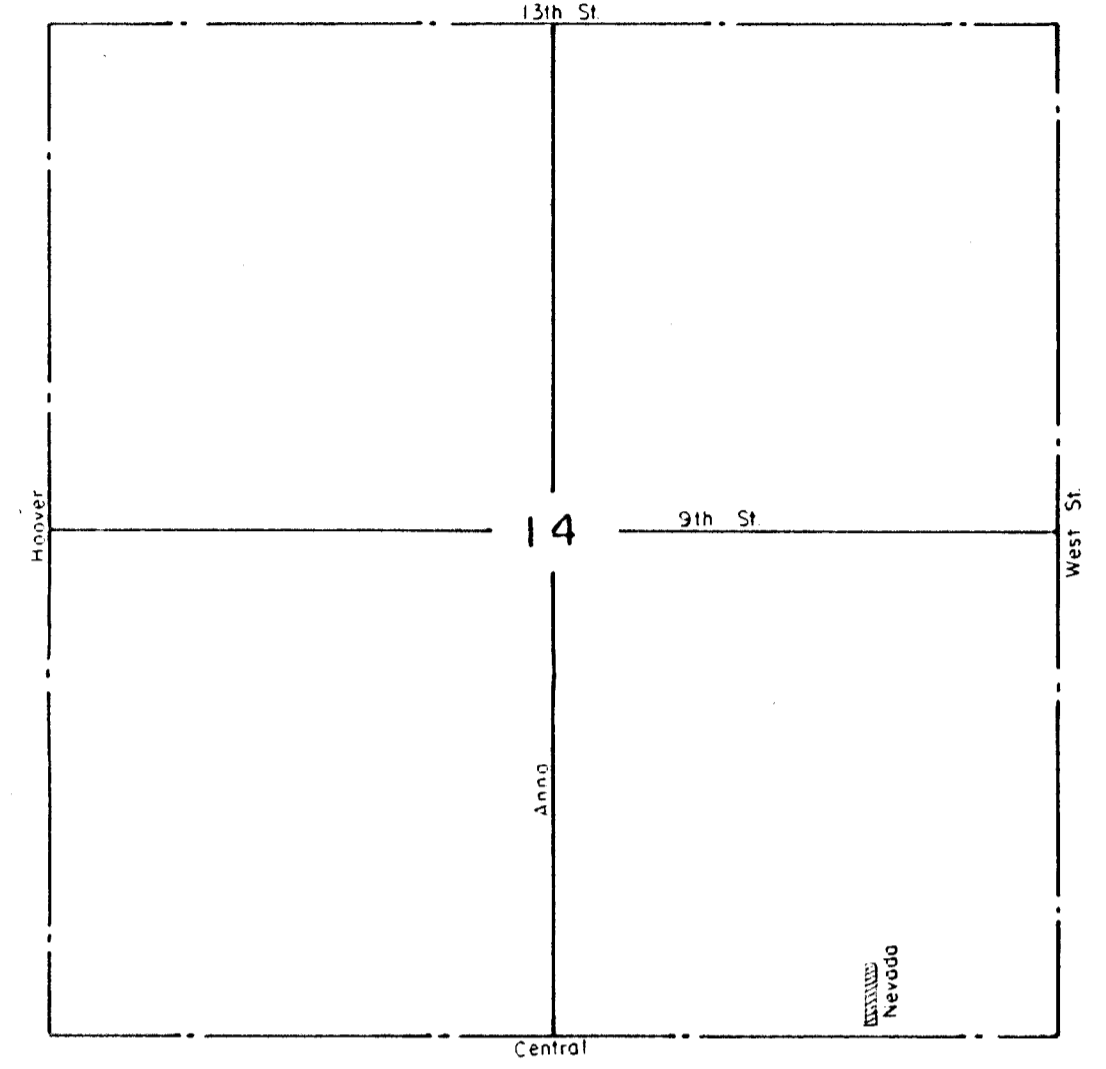


SKETCH PLAT
MARCILEE COOK ADDITION
 WICHITA, SEDGWICK COUNTY, KANSAS



B.M. ELEV. 126.40 - TOP OF MH AT NE COR. OF LOT 2, BLOCK A, PELTZER ADD.

TOPO MADE JANUARY 7, 1991



VICINITY MAP
 1" = 1000'

FOR: ED & MARCIE COOK
 4300 W. CENTRAL
 WICHITA, KS

HI-TECH SURVEYORS, INC.
 334 S. LAURA
 WICHITA, KS 67211
 JANUARY 11, 1991