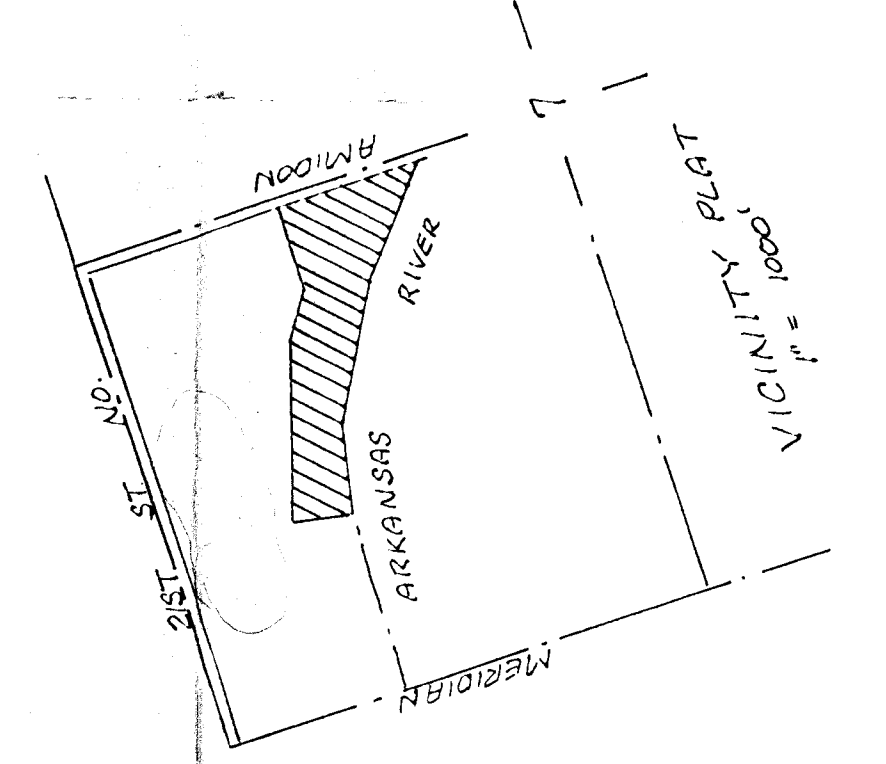


BENCH MARK, 3' S. of back
 City of St. Louis, Mo., Center
 at 2' 30" S. of River City Station
 Elev. = 127.867

E
 K 11 21' 55" 58.74 58.77

MARKED LAKE THIRD R.D.



PRELIMINARY PLAN
 PROPOSED MARINA LAKE FIFTH ADDITION, WHITE, KANSAS
 TRACT IN THE MAIN OF SEC. 7 TAP 27AS, R-4E
 MARINA LAKE DRIVE, INC.

BAUGHMAN COMPANY, P.A.
 314.252.2721 • 330 LAUREL • MOULTON, MISSOURI 64501