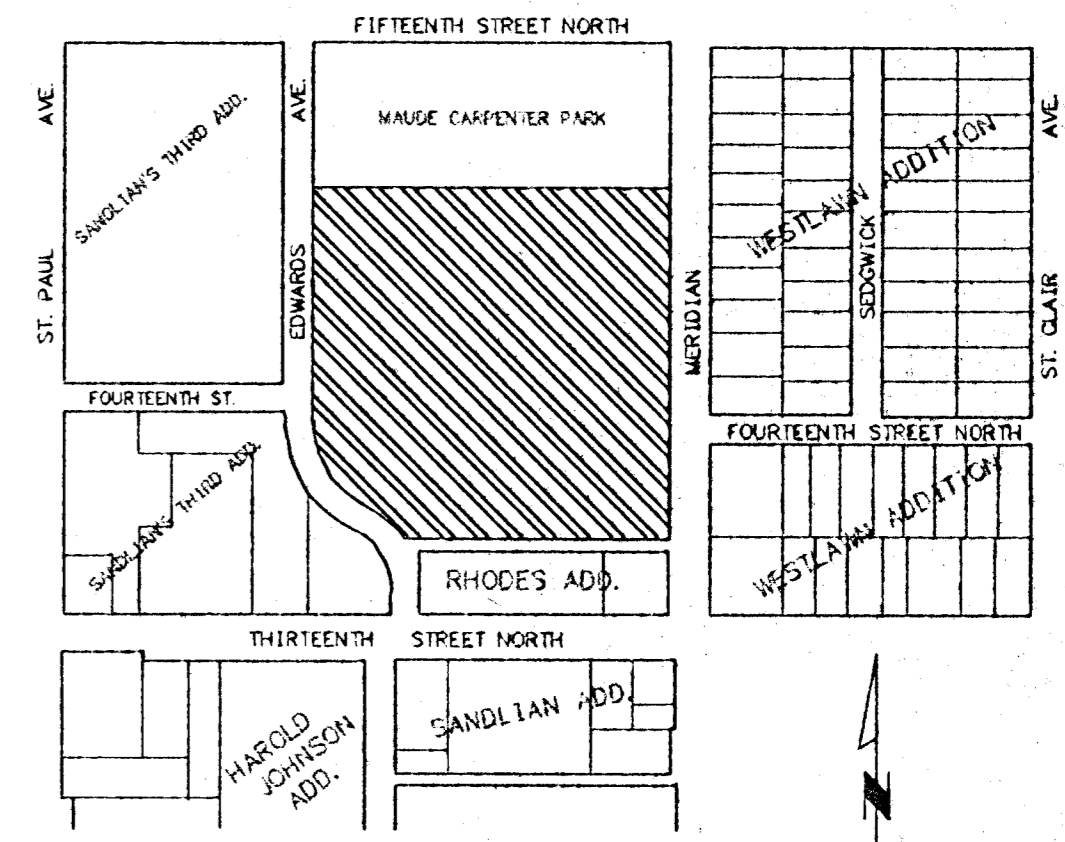
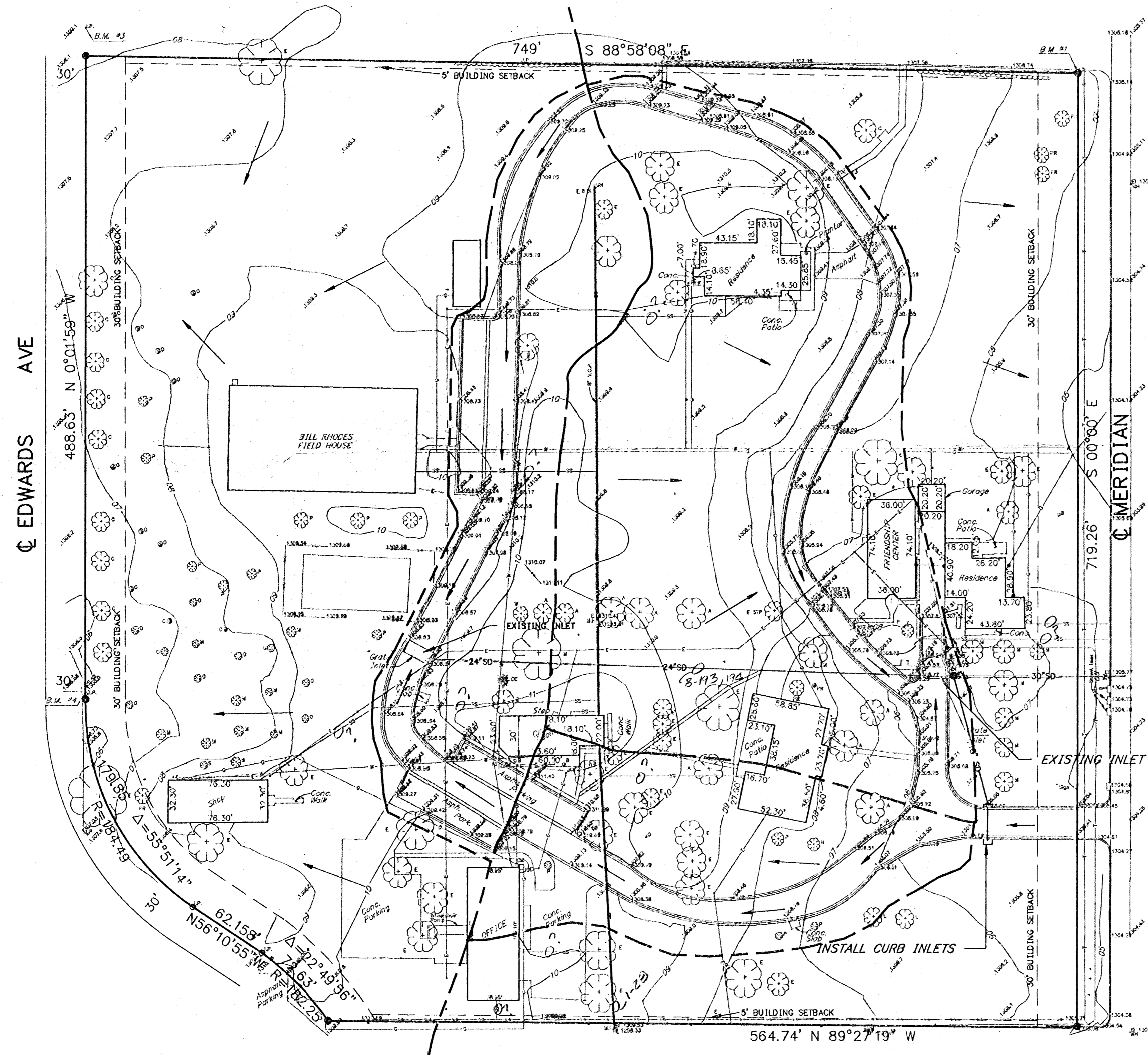


Drainage Concept Plan

MAUDE CARPENTER FIRST ADDITION

Wichita, Kansas

H-200
I-28 J-191



VICINITY MAP
N.T.S.

LEGEND

- IRON OR PIPE SET
- IRON OR PIPE FOUND
- WM WATER METER
- ⊙ GM GAS METER
- MH MAN HOLE
- FH FIRE HYDRANT
- LP LIGHT POLE
- JBT JUNCTION BOX (TELEPHONE)
- POWER POLE
- DEAD MAN
- SS — SANITARY SEWER
- SD — STORM DRAIN
- W — WATER LINE
- G — GAS LINE
- E — ELECTRIC
- UGE — UNDERGROUND ELECTRIC
- T — TELEPHONE
- FENCE
- ⊙ A ASH
- ⊙ B BUSH
- ⊙ CE CEDAR
- ⊙ C COTTONWOOD
- ⊙ E ELM
- ⊙ H HEDGE
- ⊙ L LOCUST
- ⊙ M MAPLE
- ⊙ O OAK
- ⊙ PR PEAR
- ⊙ P PECAN
- ⊙ POP POPULAR
- ⊙ S SYCAMORE
- ⊙ W WALNUT

--- DRAINAGE BOUNDARY
 → OVERLAND FLOW

SURVEYED: NOVEMBER 10, 1994
 REF. B.M. = CITY DISC AT 17TH STREET AND MERIDIAN AVENUE
 B.M. #1 = TOP OF PROPERTY IRON PIN N.E. COR. TRACT 20
 B.M. #2 = TOP OF PROPERTY IRON AT N.W. COR. OF M. CARPENTER PARK
 B.M. #3 = TOP OF PROPERTY IRON 20' N. OF S.W. COR. M. CARPENTER PARK
 B.M. #4 = TOP OF PROPERTY IRON, P.T. OF CURVE AT EDWARDS STREET

OWNER:
 Maude Carpenter Childrens Center
 1501 N. Meridian
 Wichita, Kansas 67203
 Phone 942-3221

ENGINEER/SURVEYOR:
 Booker Associates, Inc. of Kansas
 Suite 350
 225 N. Market
 Wichita, Kansas 67202
 Phone 263-6121