

PRELIMINARY PLAT OF MAXWELL ADDITION TO WICHITA, SEDGWICK COUNTY, KANSAS.

Owner: PHIL RUFFIN
P.O. Box 17037
Wichita, Ks. 67217

Engineer: Professional Engineering Consultants P.A.
1440 E. English
Wichita, Ks. 67211

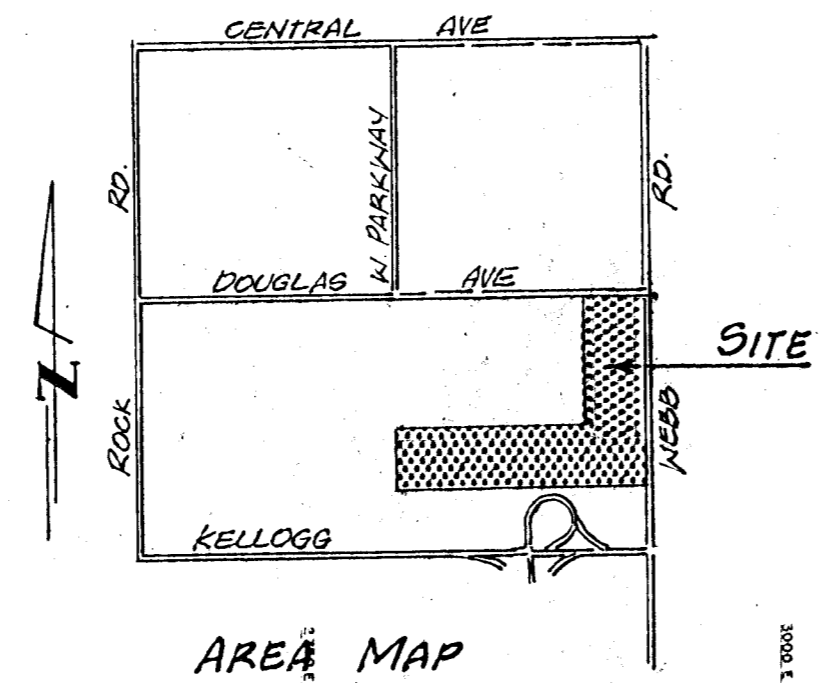
Utilities:

Gas: 6 in. Steel Gas Main on Webb Rd. located 33' West of & Webb Rd. running North-South (Gas Service)
Power: Closest place for 12 KV, 3φ, 4 wire is on Douglas Ave. in front of the Pizza Hut Main Bldg. (KG & E)
Water: East-West on Douglas, 8 in AC Main, located 1.5 ft. North of South Curb line.

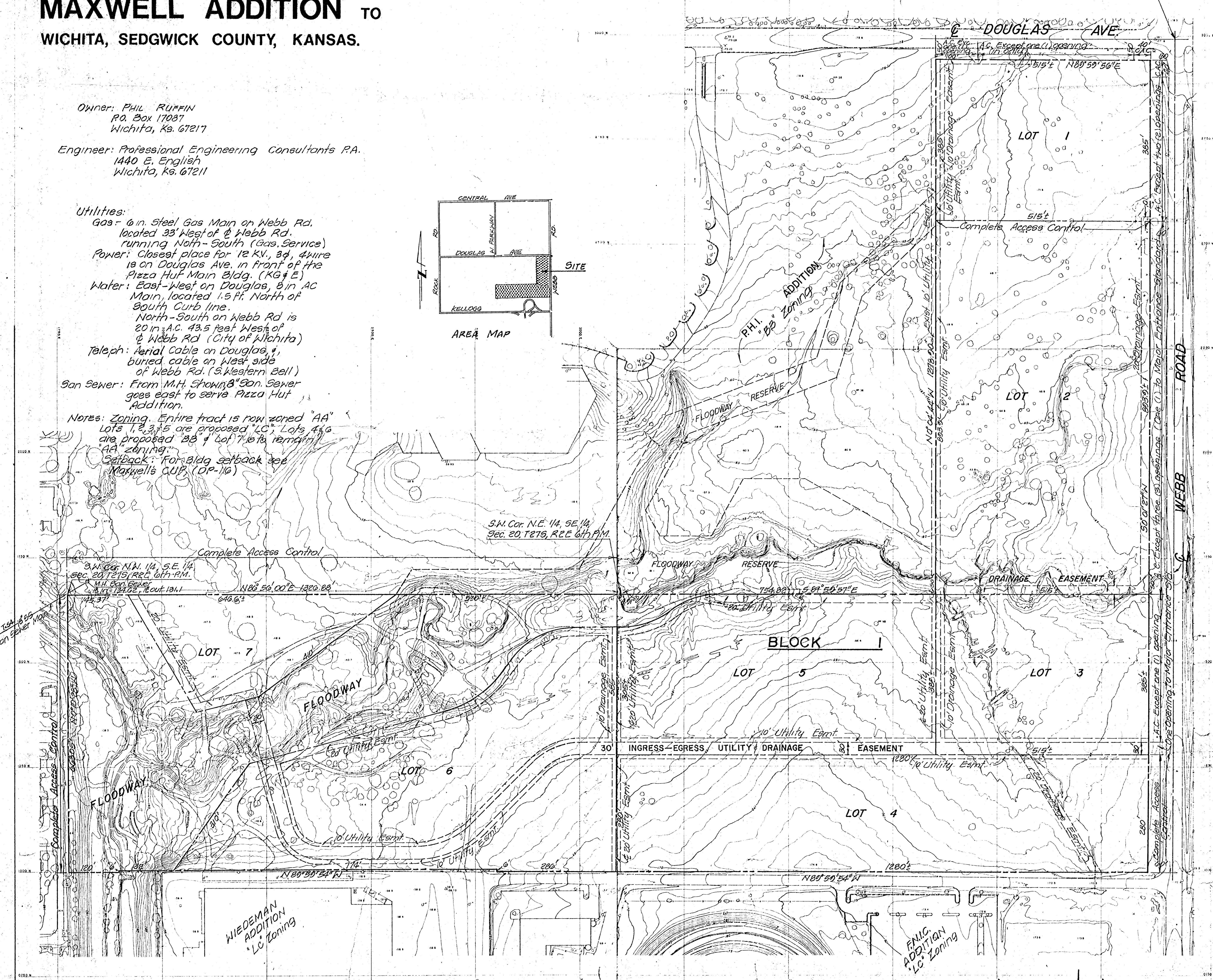
North-South on Webb Rd is 20 in. A.C. 43.5 feet West of & Webb Rd (City of Wichita)
Teleph: Aerial Cable on Douglas, & buried cable on West side of Webb Rd. (S. Western Bell)

San Sewer: From M.H. Shown's San Sewer goes east to serve Pizza Hut Addition.

Notes: Zoning. Entire tract is now zoned "AA"
Lots 1, 2, 3, 5 are proposed "LC", Lots 4, 6 are proposed "BB" & Lot 7 is remaining "AA" zoning.
Setback: For bldg setback see Maxwell's CUP, (DP-116)



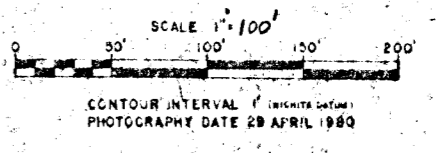
N.E. Cor. S.E. 14, Sec. 20,
T27S, R2E, of 6th P.M.



S.W. Cor. N.E. 14, S.E. 14,
Sec. 20, T27S, R2E 6th P.M.

B.M. Webb Rd & Kellogg
City of Wichita bench mark disc
73.4 So. & 31' East of centerline of
both Elev = 170.163

April, 1982
1"=100'



TOPOGRAPHIC MAP OF LAND LOCATED AT
S.E. 1/4 SECTION 20, 27S, 2E, SEDGWICK COUNTY, KANSAS