

DRAINAGE CONCEPT OF MAXWELL ADDITION TO WICHITA, SEDGWICK COUNTY, KANSAS.

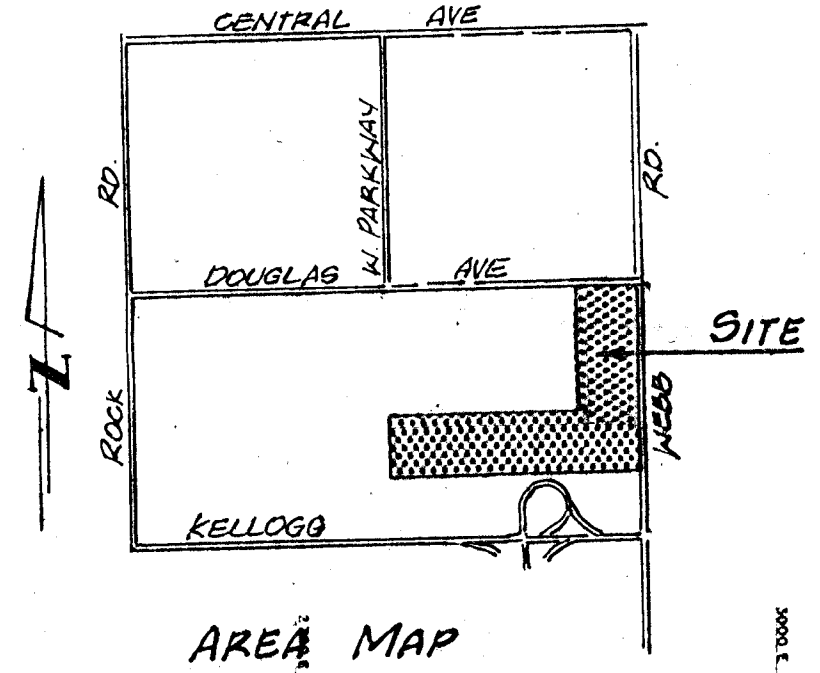
APR 30 1962

Owner: PHIL RUFFIN
P.O. Box 17087
Wichita, Ka. 67217

Engineer: Professional Engineering Consultants P.A.
1440 E. English
Wichita, Ka. 67211

LEGEND

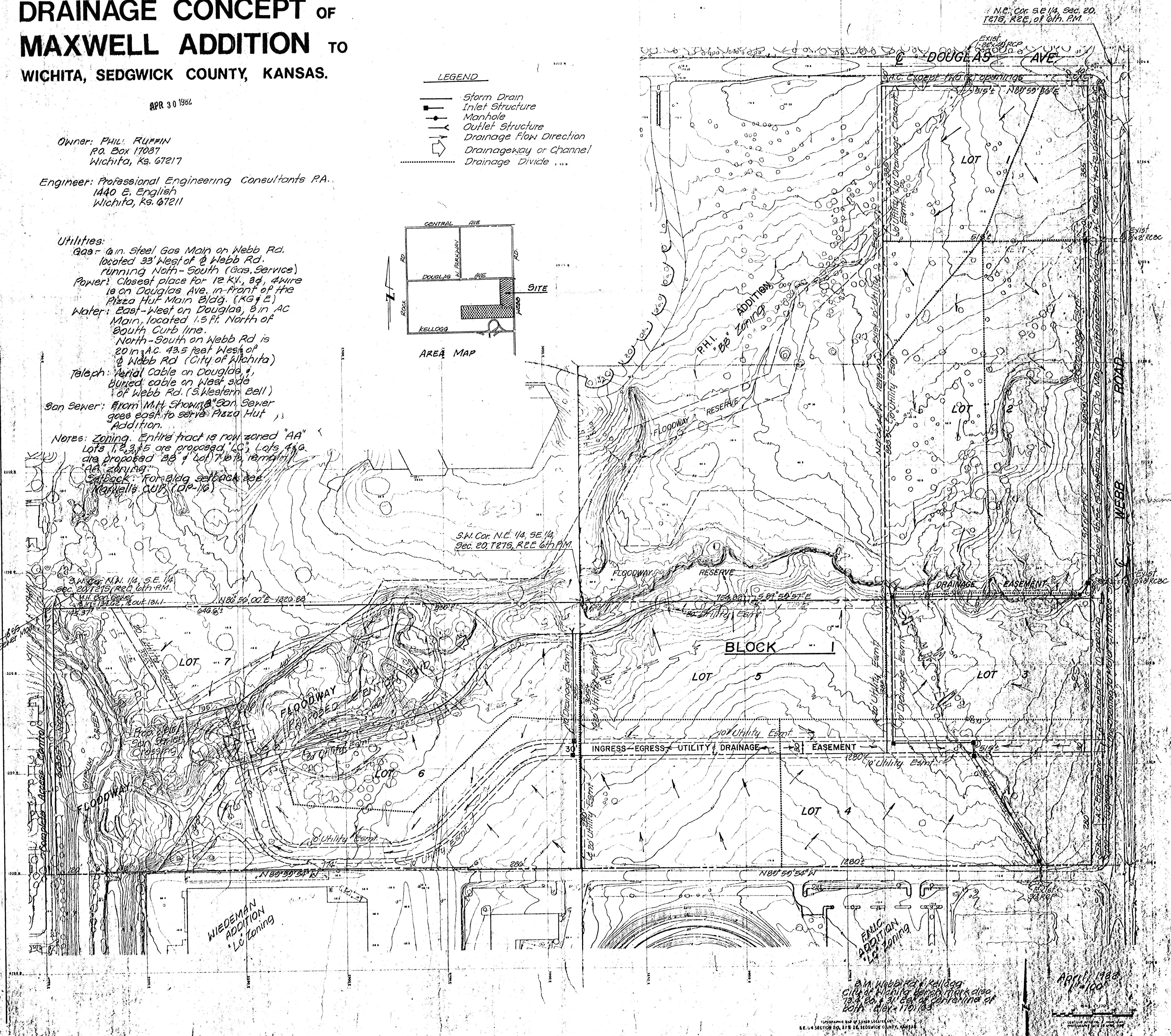
- Storm Drain
- Inlet Structure
- Manhole
- Outlet Structure
- Drainage Flow Direction
- Drainage Key or Channel
- Drainage Divide



Utilities:

- Gas: 6 in. Steel Gas Main on Webb Rd. located 33' West of Webb Rd. running North-South (Gas Service)
- Power: Closest place for 12 Kv. 3Ø, 4 wire is on Douglas Ave. in front of the Pizza Hut Main Bldg. (K&E)
- Water: East-West on Douglas, 8 in. AC Main, located 1.5 ft. North of South Curb line. North-South on Webb Rd is 20 in. AC. 43.5 feet West of Webb Rd (City of Wichita)
- Teleph: Aerial Cable on Douglas, 1, buried cable on West side of Webb Rd. (S. Western Bell)
- San Sewer: From M.H. Showers' San Sewer goes east to serve Pizza Hut Addition.

Notes: Zoning. Entire tract is now zoned "AA" Lots 1, 2, 3, 4, 5 are proposed "C-1" Lots 6, 7 are proposed "R-1" (Lot 7 is remaining AA zoning)
 setback: Formal to setback see Maxwell's CUB (DP-12)



PHIL RUFFIN
City of Wichita, Kansas, Mark also
704 E. 3rd St. Central Bldg. at
20th & 17th Sts.

April 1962
APR 1962

TOPOGRAHY MAP OF LAND LOCATED
IN SECTION 20, T21S, R2E, SEDGWICK COUNTY, KANSAS