

DRAINAGE PLAN OF MAXWELL ADDITION TO WICHITA, SEDGWICK COUNTY, KANSAS.

Owner: PHIL RUFFIN
P.O. Box 17087
Wichita, Ks. 67217

Engineer: Professional Engineering Consultants P.A.
1440 E. English
Wichita, Ks. 67211

Utilities:

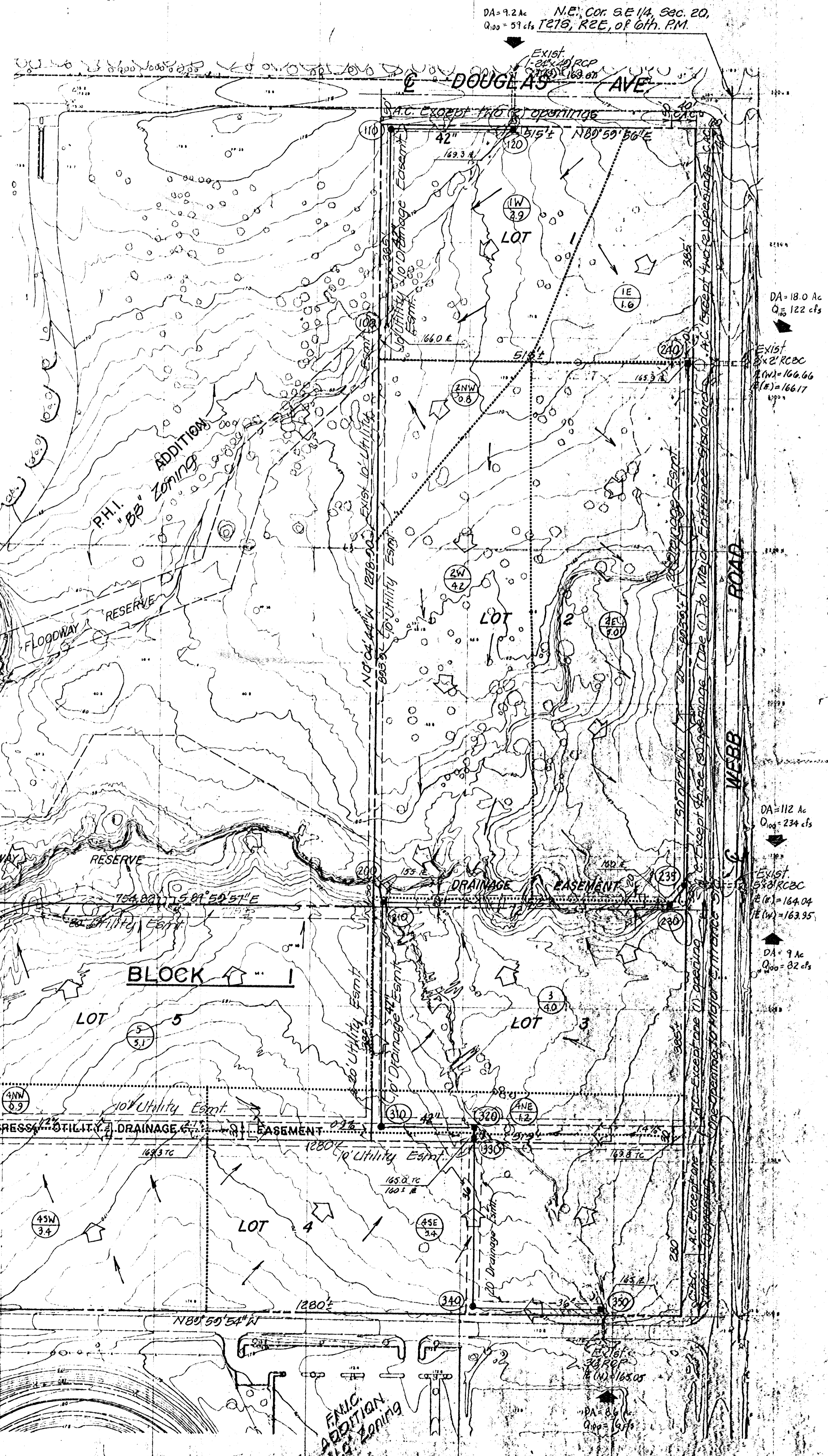
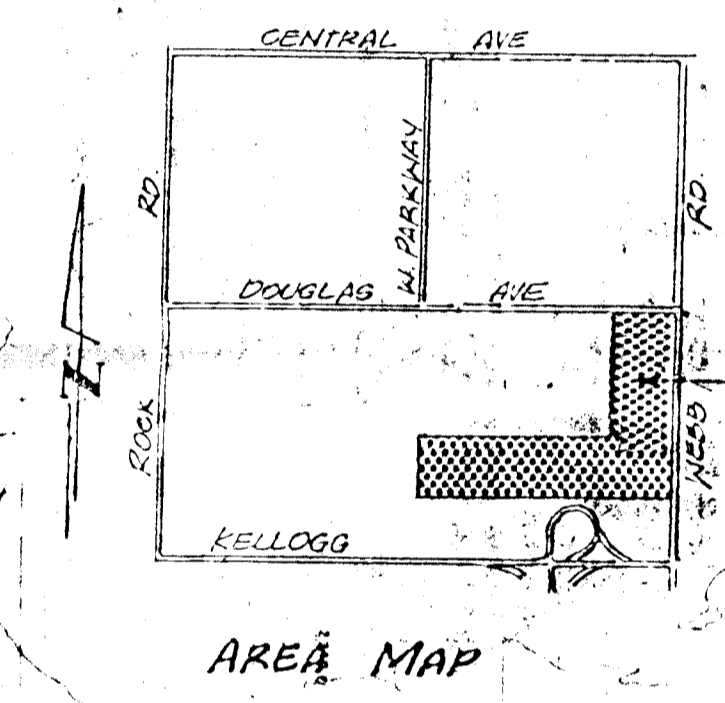
Gas - 6 in. Steel Gas Main on Webb Rd. located 33' West of Webb Rd. running North-South (Gas Service)
Power: Closest place for 12 KV, 3 ϕ , 4 wire is on Douglas Ave. in front of the Pizza Hut Main Bldg. (KG & E)
Water: East-West on Douglas, 8 in AC Main, located 1.5 ft. North of South Curb line.
North-South on Webb Rd is 20 in. AC. 43.5 feet West of Webb Rd (City of Wichita)
Teleph: Aerial Cable on Douglas, buried cable on West side of Webb Rd. (S. Western Bell)
San Sewer: From M.H. Showing San Sewer goes east to serve Pizza Hut Addition.

Notes: Zoning: Entire tract is now zoned "AA" Lots 1, 2, 3, 5 are proposed "L.C." Lots 4, 6 are proposed "B2" & lot 7 is remaining "AA" zoning.
Setback: For a/dg setback see Marshall's CUB (CP-16)

LEGEND

- 24" Storm Drain w/ Diameter
- Inlet Structure(s)
- Manhole
- Outlet Structure
- Design Storm Flow Direction
- Major Storm Flow Direction
- Drainage Divide
- FEMA Floodway Boundary
- FEMA Floodplain Boundary (100-Year W.S. Elev. = 148.7)
- Storm Drain System Node
- Subarea Designation & Area (Ac.)
- Top of Curb Elevation (Std. Curb)
- Flowline Elevation
- Street Grade
- External Runoff

NOTE: ALL LOTS SHALL BE GRADED TO DRAIN TO EXISTING STREETS, GUTTERS, STORM SEWERS, EXISTING FLOODWAY STRUCTURES, FLUMES, PRIVATE STORM SEWERS, AND/OR OTHER APPROVED DRAINAGE FACILITIES.
Minimum pad Elevation Lots 6 & 7 = 150.0



DA = 9.2 Ac
Q₁₀₀ = 51 cfs
N.E. Cor. S.E. 1/4, Sec. 20,
T27S, R2E, of 6th P.M.

DA = 18.0 Ac
Q₁₀₀ = 122 cfs

DA = 112 Ac
Q₁₀₀ = 234 cfs

DA = 9 Ac
Q₁₀₀ = 82 cfs

WIEDEMAN
ADDITION
L₁ Zoning

FAUC
ADDITION
L₁ Zoning

June 25, 1988
11-100

PHILIP RUFFIN, ENGINEER
PROFESSIONAL ENGINEERING CONSULTANTS P.A.
1440 E. ENGLISH, WICHITA, KANSAS 67211
TOPOGRAPHIC MAP OF LAND LOCATED IN
S.E. 1/4 SECTION 20, T27S R2E, SEDGWICK COUNTY, KANSAS